

Single Family



2447 SQFT



4 Beds



4 Baths



3 Car



0.14 Acre



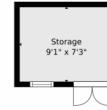
Alexis Foster
970-310-6999
alexisfoster@windermere.com



Scan code
for more
property
details



896 South Prairie Drive, Milliken, CO 80543 – Main Level



TOTAL: 2200 sq. ft
Below Ground: 569 sq. ft, FLOOR 2: 712 sq. ft, FLOOR 3: 919 sq. ft
EXCLUDED AREAS: ELECTRICAL ROOM: 73 sq. ft, GARAGE: 532 sq. ft, STORAGE: 65 sq. ft,
PORCH: 133 sq. ft, PATIO: 898 sq. ft

Floor Plan Created By V1photos.com, Measurements Deamed Highly Reliable But Not Guaranteed.



Disclaimer: Sizes and Dimensions are Approximate, Actual May Vary.



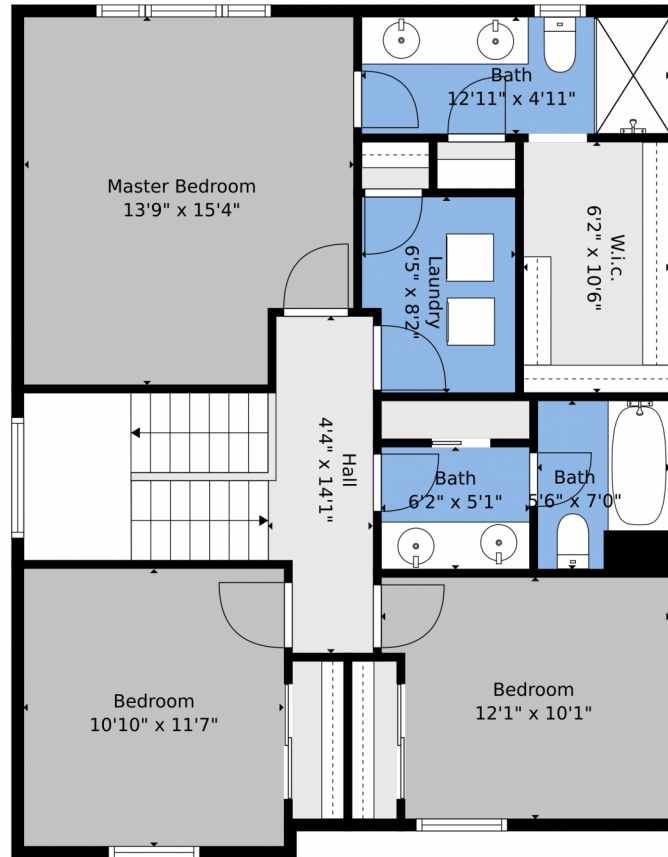
Alexis Foster
970-310-6999
alexisfoster@windermere.com



Scan code
for more
property
details



896 South Prairie Drive, Milliken, CO 80543 – Upper Level



TOTAL: 2200 sq. ft
Below Ground: 569 sq. ft, FLOOR 2: 712 sq. ft, FLOOR 3: 919 sq. ft
EXCLUDED AREAS: ELECTRICAL ROOM: 73 sq. ft, GARAGE: 532 sq. ft, STORAGE: 65 sq. ft,
PORCH: 133 sq. ft, PATIO: 898 sq. ft

Floor Plan Created By V1photos.com. Measurements Deamed Highly Reliable But Not Guaranteed.



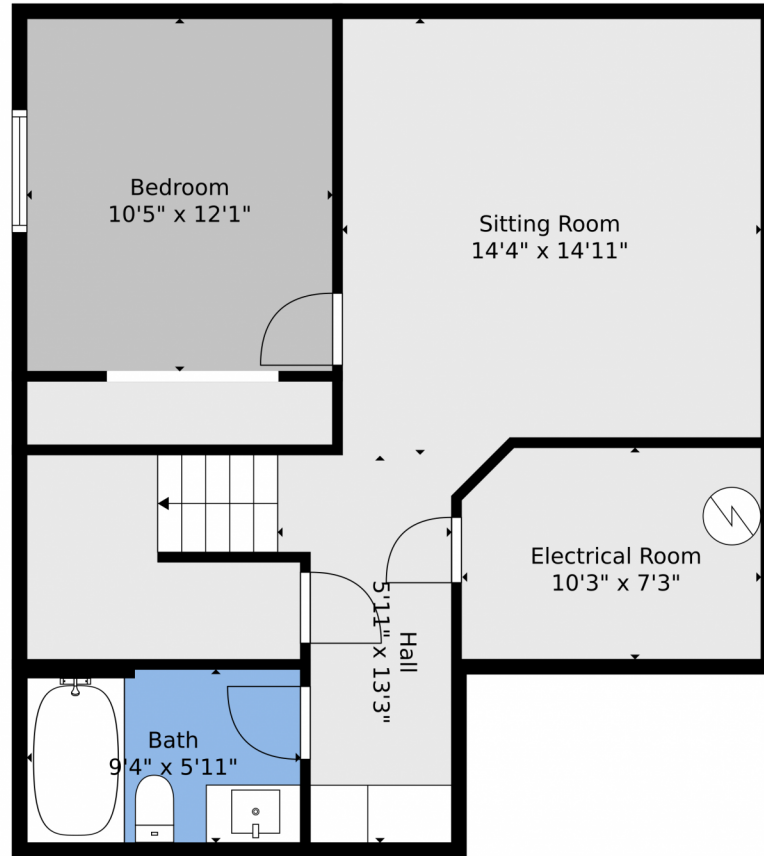
Disclaimer: Sizes and Dimensions are Approximate, Actual May Vary.



Alexis Foster
970-310-6999
alexisfoster@windermere.com



896 South Prairie Drive, Milliken, CO 80543 – Lower Level



TOTAL: 2200 sq. ft
Below Ground: 569 sq. ft, FLOOR 2: 712 sq. ft, FLOOR 3: 919 sq. ft
EXCLUDED AREAS: ELECTRICAL ROOM: 73 sq. ft, GARAGE: 532 sq. ft, STORAGE: 65 sq. ft,
PORCH: 133 sq. ft, PATIO: 898 sq. ft

Floor Plan Created By V1photos.com, Measurements Deamed Highly Reliable But Not Guaranteed.



Disclaimer: Sizes and Dimensions are Approximate, Actual May Vary.

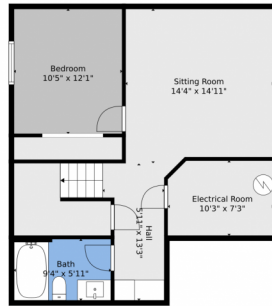
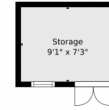


Alexis Foster
970-310-6999
alexisfoster@windermere.com



Scan code
for more
property
details

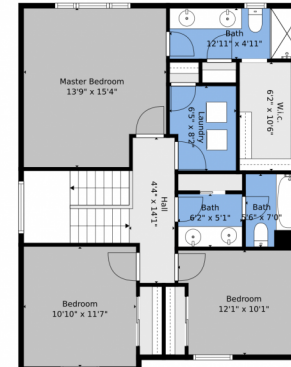
896 South Prairie Drive, Milliken, CO 80543 – All Levels



Floor 1



Floor 2



Floor 3



TOTAL: 2200 sq. ft
Below Ground: 569 sq. ft, FLOOR 2: 712 sq. ft, FLOOR 3: 919 sq. ft
EXCLUDED AREAS: ELECTRICAL ROOM: 73 sq. ft, GARAGE: 532 sq. ft, STORAGE: 65 sq. ft,
PORCH: 133 sq. ft, PATIO: 898 sq. ft

Floor Plan Created By V1photos.com, Measurements Deamed Highly Reliable But Not Guaranteed.



Disclaimer: Sizes and Dimensions are Approximate, Actual May Vary.



Alexis Foster
970-310-6999
alexisfoster@windermere.com



Scan code
for more
property
details

