



365 Casalon Place  
Superior, CO 80027

PRICE  
\$1,498,500



Single Family



4334 SQFT



4 Beds



3/1 Baths



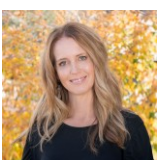
2 Car



0.19 Acre

## PROPERTY DETAILS

Luxury Living at Calmante. This lock and leave property offers the best of all worlds. Steps to Coalton Trailhead, paths, parks, shopping and more. Expansive covered porch, high-end tile, and white oak flooring. Chef's dream kitchen with quartz counters and S/S appliances. Open floor plan with gas fireplace. Private covered deck with mountain views. Large primary with attached bath and huge closet. Second bedroom with full bath. Walkout basement with media room and private patio. Owned solar and upgraded features throughout.



**Terri Ellerington**

303-929-8116

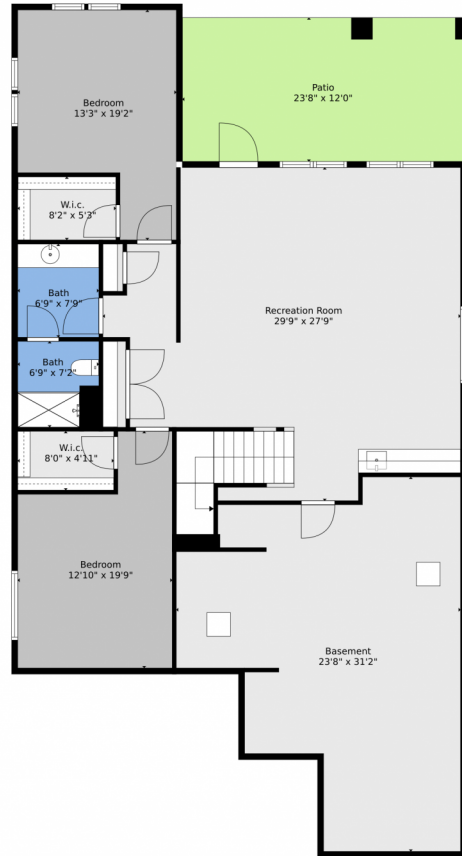
terri@elevated-team.com

<https://www.remax.com/real-estate-agents/terri-ellerington-louisville-co/10205130>



Scan code  
for more  
property  
details





**TOTAL: 3983 sq. ft**  
Below Ground: 1931 sq. ft, FLOOR 2: 2052 sq. ft  
EXCLUDED AREAS: PATIO: 283 sq. ft, BALCONY: 279 sq. ft, PORCH: 182 sq. ft,  
GARAGE: 379 sq. ft

Floor Plan Created By V1photos.com, Measurements Deamed Highly Reliable But Not Guaranteed.



Disclaimer: Sizes and Dimensions are Approximate, Actual May Vary.



**Terri Ellerington**

303-929-8116

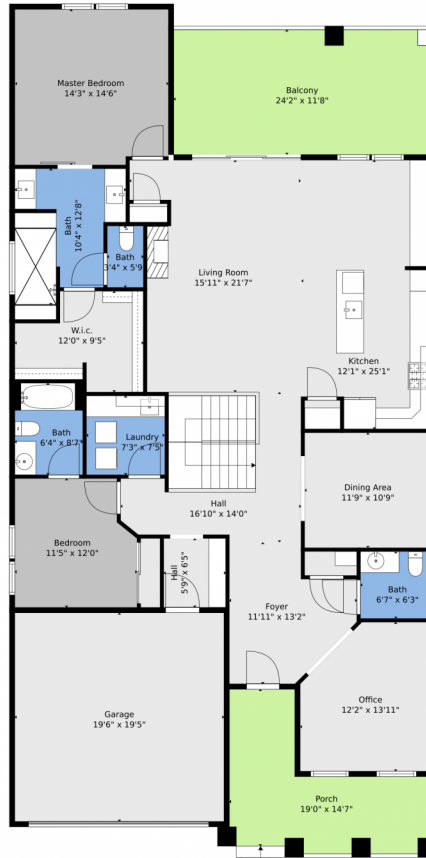
terri@elevated-team.com

<https://www.remax.com/real-estate-agents/terri-ellerington-louisville-co/102051301>



Scan code  
for more  
property  
details





**TOTAL: 3983 sq. ft**  
Below Ground: 1931 sq. ft, FLOOR 2: 2052 sq. ft  
EXCLUDED AREAS: PATIO: 283 sq. ft, BALCONY: 279 sq. ft, PORCH: 182 sq. ft,  
GARAGE: 379 sq. ft

Floor Plan Created By V1photos.com, Measurements Deamed Highly Reliable But Not Guaranteed.



Disclaimer: Sizes and Dimensions are Approximate, Actual May Vary.



**Terri Ellerington**  
303-929-8116  
terri@elevated-team.com  
<https://www.remax.com/real-estate-agents/terri-ellerington-louisville-co/102051301>



Scan code  
for more  
property  
details



# 365 Casalon Place, Superior, CO 80027 – floorplan\_all\_0



**TOTAL: 3983 sq. ft**  
Below Ground: 1931 sq. ft, FLOOR 2: 2052 sq. ft  
EXCLUDED AREAS: PATIO: 283 sq. ft, BALCONY: 279 sq. ft, PORCH: 182 sq. ft,  
GARAGE: 379 sq. ft

Floor Plan Created By V1photos.com, Measurements Deamed Highly Reliable But Not Guaranteed.



Disclaimer: Sizes and Dimensions are Approximate, Actual May Vary.



**Terri Ellerington**

303-929-8116

terri@elevated-team.com

<https://www.remax.com/real-estate-agents/terri-ellerington-louisville-co/102051301>

Scan code  
for more  
property  
details

