

Single Family  
 2500 SQFT  
 5 Beds  
 3/1 Baths  
 2 Car  
 0.23 Acre

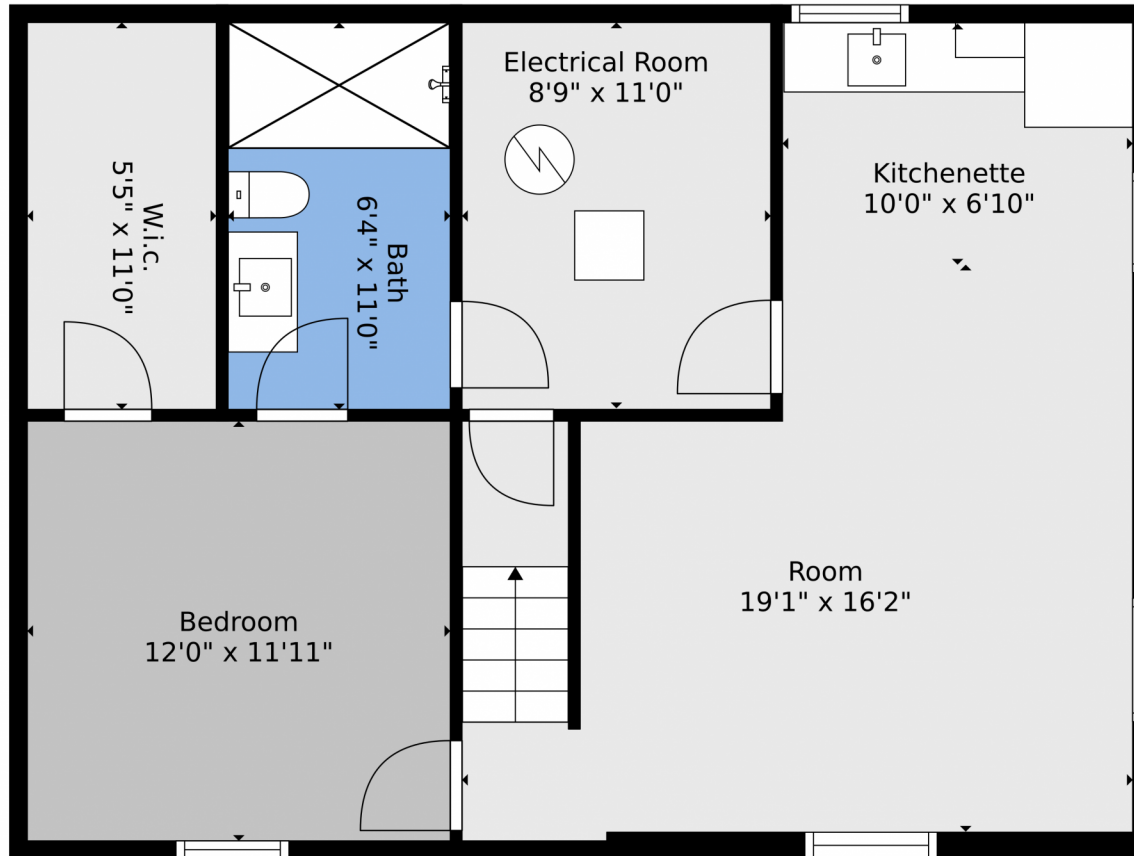
## PROPERTY DETAILS

Welcome to your dream home in Fort Collins! This stunning house offers 5 bedrooms and 4 bathrooms, perfect for a growing family or those who love to entertain. Close to Colorado State University, it provides easy access to campus events. Every inch of this home has been thoughtfully remodeled with modern elegance. The kitchen features stainless steel appliances and a convenient coffee bar. Brand new flooring flows throughout the house, paired with contemporary light fixtures. The property boasts a spacious yard, ideal for outdoor activities. Enjoy your morning coffee or evening dinners on the deck out back. Fort Collins offers a perfect blend of small-town charm and modern amenities. Don't miss the chance to make this incredible home yours. Schedule your showing today!



**Cynthia Padilla**  
303-944-1373  
cynthia.padilla@kw.com





**TOTAL: 2194 sq. ft**  
Below Ground: 633 sq. ft, FLOOR 2: 763 sq. ft, FLOOR 3: 798 sq. ft  
EXCLUDED AREAS: ELECTRICAL ROOM: 97 sq. ft, GARAGE: 487 sq. ft, PORCH: 32 sq. ft,  
DECK: 172 sq. ft, FIREPLACE: 10 sq. ft

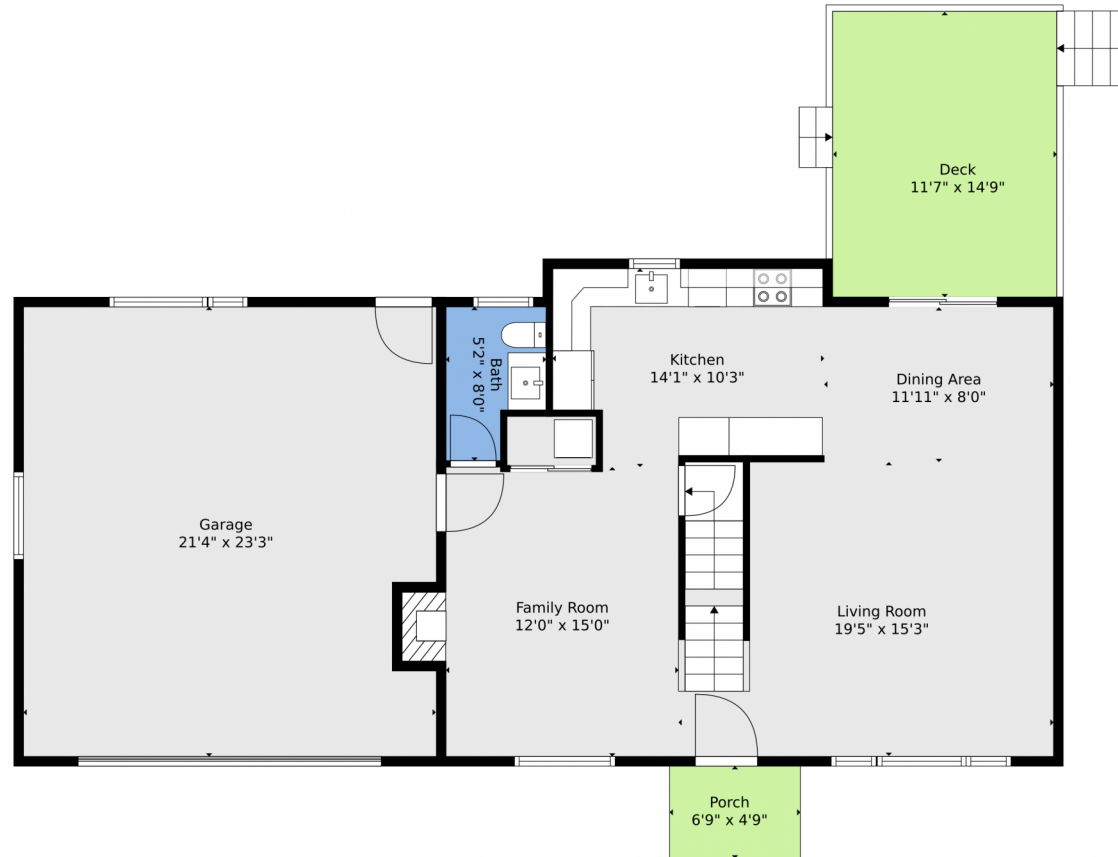
Floor Plan Created By V1photos.com. Measurements Deamed Highly Reliable But Not Guaranteed.

Disclaimer: Sizes and Dimensions are Approximate, Actual May Vary.



**Cynthia Padilla**  
303-944-1373  
cynthia.padilla@kw.com





**TOTAL: 2194 sq. ft**  
Below Ground: 633 sq. ft, FLOOR 2: 763 sq. ft, FLOOR 3: 798 sq. ft  
EXCLUDED AREAS: ELECTRICAL ROOM: 97 sq. ft, GARAGE: 487 sq. ft, PORCH: 32 sq. ft,  
DECK: 172 sq. ft, FIREPLACE: 10 sq. ft

Floor Plan Created By V1photos.com. Measurements Deamed Highly Reliable But Not Guaranteed.

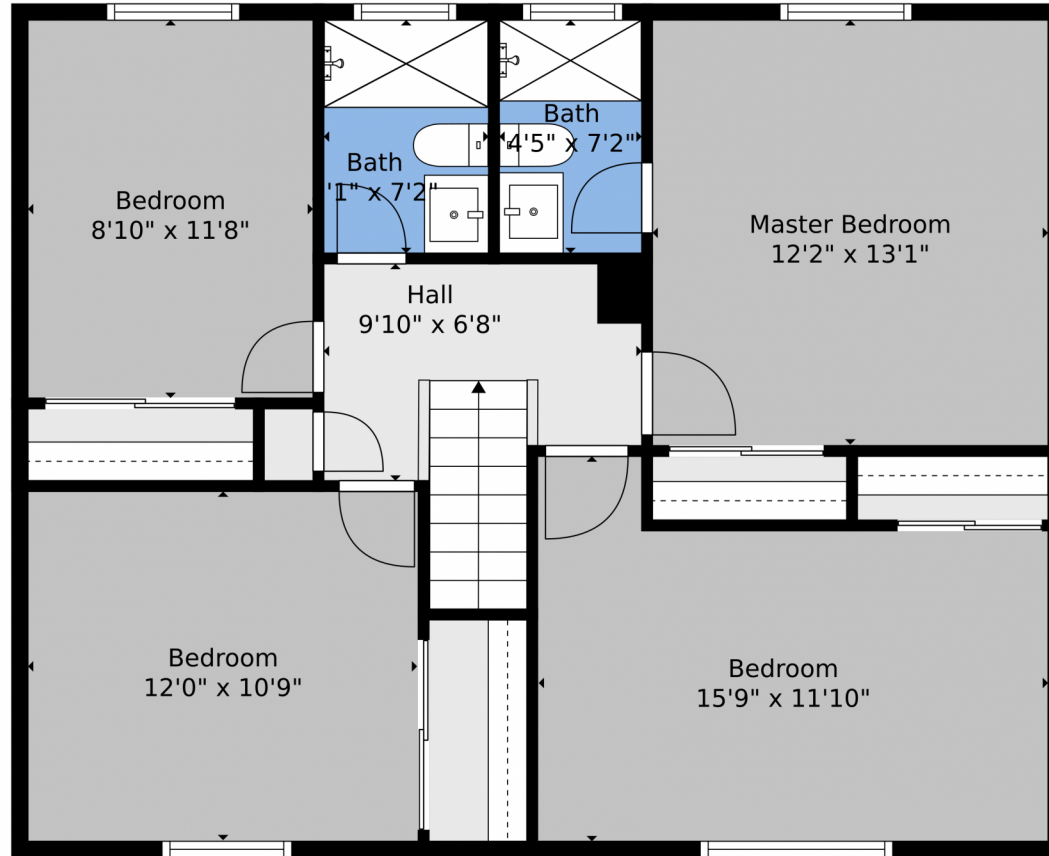
Disclaimer: Sizes and Dimensions are Approximate, Actual May Vary.



**Cynthia Padilla**  
303-944-1373  
cynthia.padilla@kw.com



Scan code  
for more  
property  
details



**TOTAL: 2194 sq. ft**  
Below Ground: 633 sq. ft, FLOOR 2: 763 sq. ft, FLOOR 3: 798 sq. ft  
EXCLUDED AREAS: ELECTRICAL ROOM: 97 sq. ft, GARAGE: 487 sq. ft, PORCH: 32 sq. ft,  
DECK: 172 sq. ft, FIREPLACE: 10 sq. ft

Floor Plan Created By V1photos.com, Measurements Deamed Highly Reliable But Not Guaranteed.

Disclaimer: Sizes and Dimensions are Approximate, Actual May Vary.



**Cynthia Padilla**  
303-944-1373  
cynthia.padilla@kw.com



Scan code  
for more  
property  
details







**TOTAL: 2194 sq. ft**  
Below Ground: 633 sq. ft, FLOOR 2: 763 sq. ft, FLOOR 3: 798 sq. ft  
EXCLUDED AREAS: ELECTRICAL ROOM: 97 sq. ft, GARAGE: 487 sq. ft, PORCH: 32 sq. ft,  
DECK: 172 sq. ft, FIREPLACE: 10 sq. ft

Floor Plan Created By V1photos.com, Measurements Deamed Highly Reliable But Not Guaranteed.

Disclaimer: Sizes and Dimensions are Approximate, Actual May Vary.



Cynthia Padilla  
303-944-1373  
cynthia.padilla@kw.com



Scan code  
for more  
property  
details

