



13175 Summit Grove Parkway
 Thornton, CO 80241
 COMMUNITY: Woodbridge Station



13175 Summit Grove Parkway, Thornton, CO 80241 - floorplan_single_1



Single Family



3000 SQFT



4 Beds



2/1 Baths



3 Car

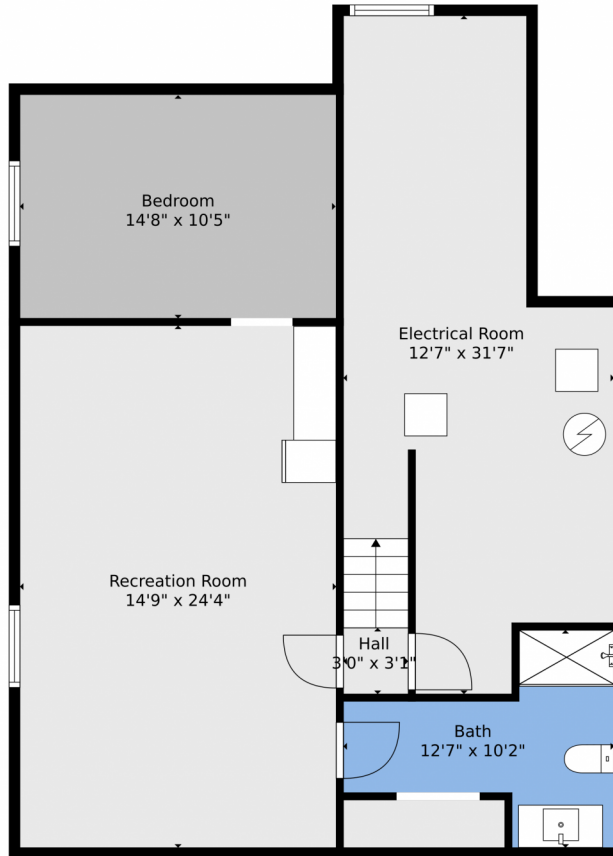


Brittany Downs
 720-788-2683
 brittany@exitrealtycherrycreek.com
 http://brokerwithbritt.com/



Scan code
 for more
 property
 details





TOTAL: 2462 sq. ft
Below Ground: 659 sq. ft, FLOOR 2: 1803 sq. ft
EXCLUDED AREAS: ELECTRICAL ROOM: 303 sq. ft, GARAGE: 688 sq. ft, PORCH: 45 sq. ft,
PATIO: 287 sq. ft

Floor Plan Created By V1photos.com. Measurements Deamed Highly Reliable But Not Guaranteed.

Disclaimer: Sizes and Dimensions are Approximate, Actual May Vary.



Brittany Downs
720-788-2683
brittany@exitrealtycherrycreek.com
<http://brokerwithbritt.com/>





TOTAL: 2462 sq. ft
Below Ground: 659 sq. ft, FLOOR 2: 1803 sq. ft
EXCLUDED AREAS: ELECTRICAL ROOM: 303 sq. ft, GARAGE: 688 sq. ft, PORCH: 45 sq. ft,
PATIO: 287 sq. ft

Floor Plan Created By V1photos.com, Measurements Deamed Highly Reliable But Not Guaranteed.



Disclaimer: Sizes and Dimensions are Approximate, Actual May Vary.



Brittany Downs
720-788-2683
brittany@exitrealtycherrycreek.com
<http://brokerwithbritt.com/>



Scan code
for more
property
details



13175 Summit Grove Parkway, Thornton, CO 80241 – floorplan_all_0



Floor 1

Floor 2



TOTAL: 2462 sq. ft
Below Ground: 659 sq. ft, FLOOR 2: 1803 sq. ft
EXCLUDED AREAS: ELECTRICAL ROOM: 303 sq. ft, GARAGE: 688 sq. ft, PORCH: 45 sq. ft,
PATIO: 287 sq. ft

Floor Plan Created By V1photos.com. Measurements Deamed Highly Reliable But Not Guaranteed.



Disclaimer: Sizes and Dimensions are Approximate, Actual May Vary.



Brittany Downs
720-788-2683
brittany@exitrealtycherrycreek.com
<http://brokerwithbritt.com/>



Scan code
for more
property
details

