

Single Family



4197 SQFT



4 Beds



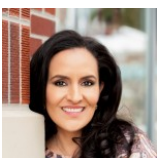
3/1 Baths



2 Car



0.13 Acre



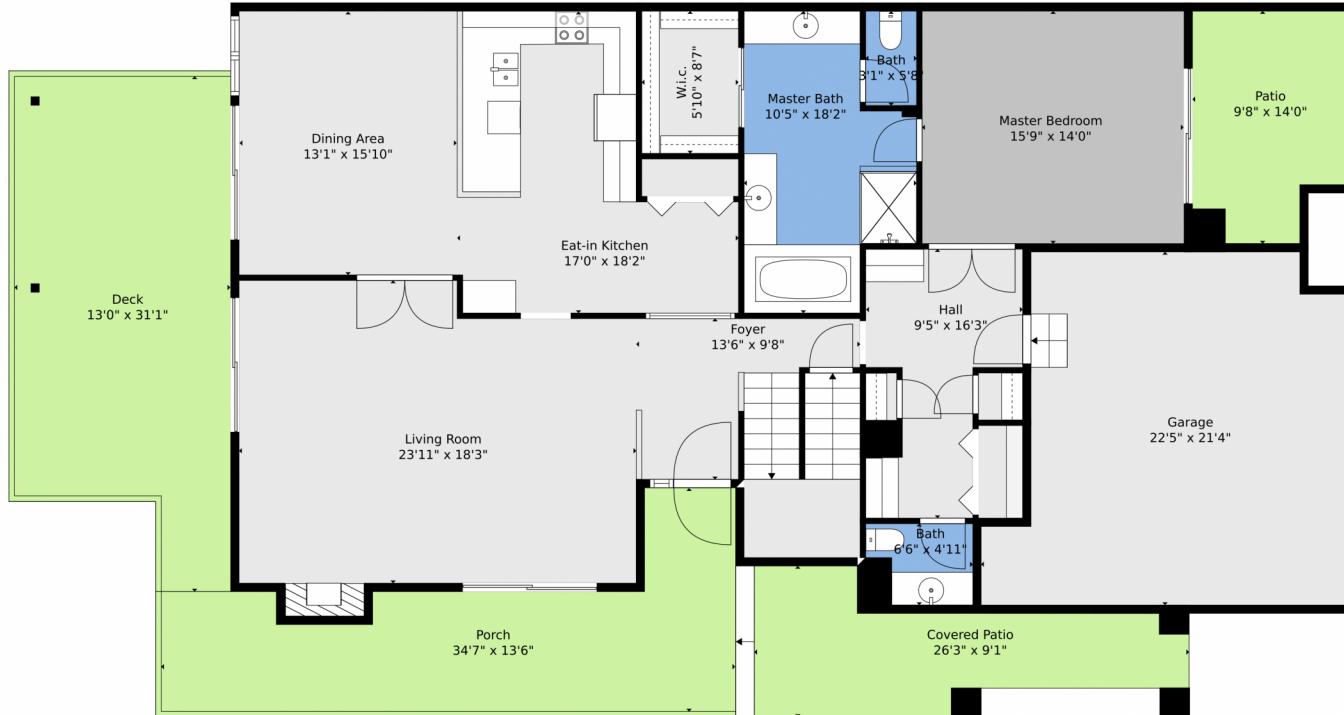
**Lillian Colbert**  
303-549-7907  
lilliancolbert@comcast.net



Scan code  
for more  
property  
details



# 7500 East Dartmouth Avenue, Denver, CO 80231 – Main Level

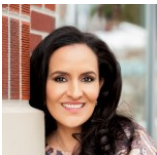


**TOTAL: 3644 sq. ft**  
Below Ground: 1419 sq. ft, FLOOR 2: 1714 sq. ft, FLOOR 3: 511 sq. ft  
EXCLUDED AREAS: STORAGE: 41 sq. ft, ELECTRICAL ROOM: 89 sq. ft, FIREPLACE: 26 sq. ft,  
COVERED PATIO: 170 sq. ft, PATIO: 124 sq. ft, DECK: 372 sq. ft,  
PORCH: 288 sq. ft, GARAGE: 419 sq. ft

Floor Plan Created By V1photos.com, Measurements Deamed Highly Reliable But Not Guaranteed.



Disclaimer: Sizes and Dimensions are Approximate, Actual May Vary.



**Lillian Colbert**  
303-549-7907  
lilliancolbert@comcast.net



Scan code  
for more  
property  
details



7500 East Dartmouth Avenue, Denver, CO 80231 – Upper Level

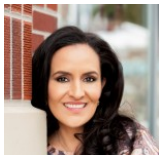


**TOTAL: 3644 sq. ft**  
Below Ground: 1419 sq. ft, FLOOR 2: 1714 sq. ft, FLOOR 3: 511 sq. ft  
EXCLUDED AREAS: STORAGE: 41 sq. ft, ELECTRICAL ROOM: 89 sq. ft, FIREPLACE: 26 sq. ft,  
COVERED PATIO: 170 sq. ft, PATIO: 124 sq. ft, DECK: 372 sq. ft,  
PORCH: 288 sq. ft, GARAGE: 419 sq. ft

Floor Plan Created By V1photos.com. Measurements Deamed Highly Reliable But Not Guaranteed.



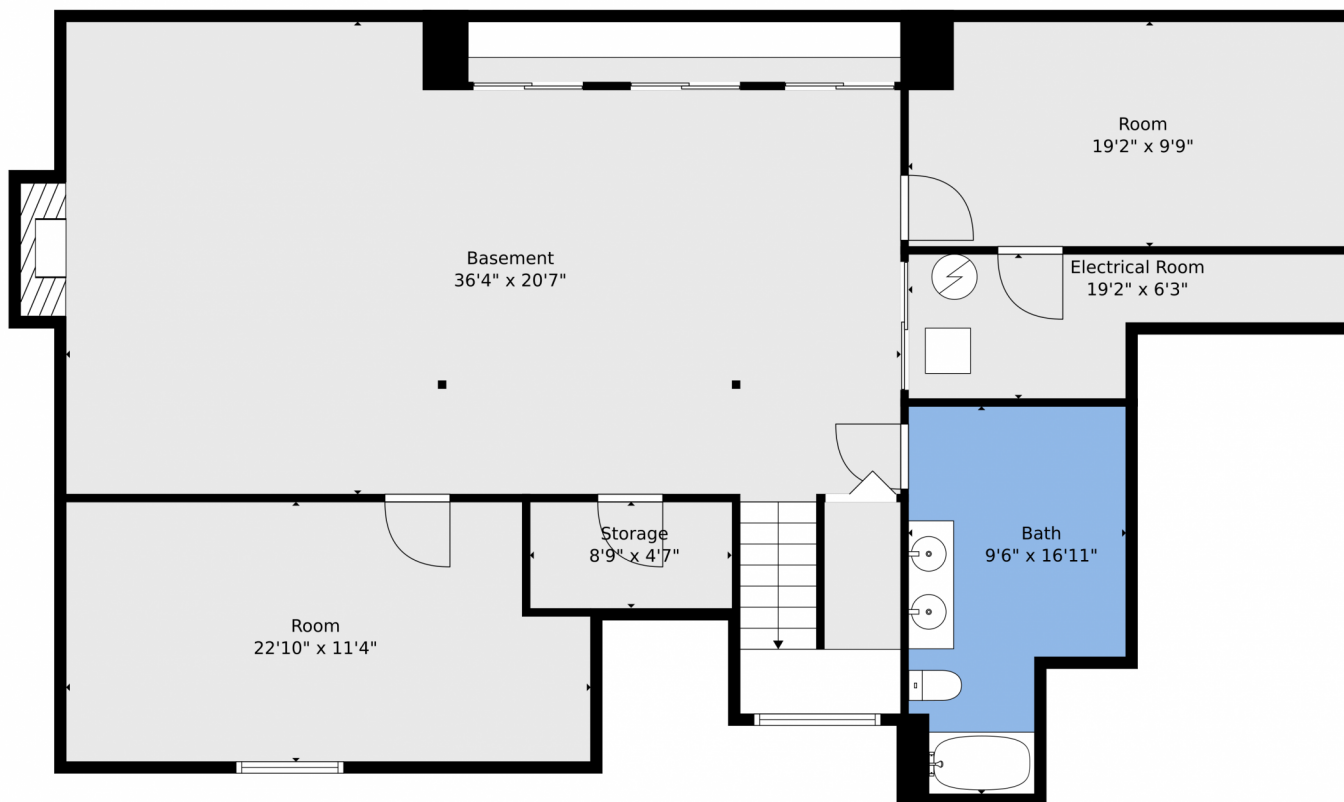
Disclaimer: Sizes and Dimensions are Approximate, Actual May Vary.



**Lillian Colbert**  
303-549-7907  
lilliancolbert@comcast.net



Scan code  
for more  
property  
details

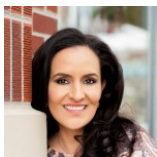


**TOTAL: 3644 sq. ft**  
Below Ground: 1419 sq. ft, FLOOR 2: 1714 sq. ft, FLOOR 3: 511 sq. ft  
EXCLUDED AREAS: STORAGE: 41 sq. ft, ELECTRICAL ROOM: 89 sq. ft, FIREPLACE: 26 sq. ft,  
COVERED PATIO: 170 sq. ft, PATIO: 124 sq. ft, DECK: 372 sq. ft,  
PORCH: 288 sq. ft, GARAGE: 419 sq. ft

Floor Plan Created By V1photos.com, Measurements Deamed Highly Reliable But Not Guaranteed.



Disclaimer: Sizes and Dimensions are Approximate, Actual May Vary.



**Lillian Colbert**  
303-549-7907  
lilliancolbert@comcast.net



# 7500 East Dartmouth Avenue, Denver, CO 80231 – All Levels



**TOTAL: 3644 sq. ft**

Below Ground: 1419 sq. ft, FLOOR 2: 1714 sq. ft, FLOOR 3: 511 sq. ft  
EXCLUDED AREAS: STORAGE: 41 sq. ft, ELECTRICAL ROOM: 89 sq. ft, FIREPLACE: 26 sq. ft,  
COVERED PATIO: 170 sq. ft, PATIO: 124 sq. ft, DECK: 372 sq. ft,  
PORCH: 288 sq. ft, GARAGE: 419 sq. ft

Floor Plan Created By V1photos.com, Measurements Deamed Highly Reliable But Not Guaranteed.



Disclaimer: Sizes and Dimensions are Approximate, Actual May Vary.



Lillian Colbert  
303-549-7907  
lilliancolbert@comcast.net



Scan code  
for more  
property  
details