




12554 Forest Drive, Thornton, CO 80241 - floorplan_single_1



 Single Family

 1410 SQFT

 2 Beds

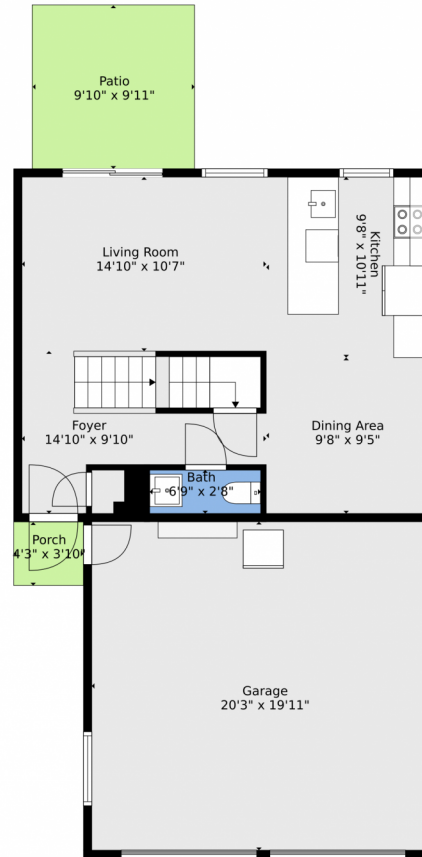
 1/1 Baths



Taylor Haas
303-665-7368
taylorh@coloradorpm.com
<https://www.coloradorpm.com/available-rental-properties-denver>



12554 Forest Drive, Thornton, CO 80241 – Main Level



TOTAL: 1205 sq. ft
Below Ground: 267 sq. ft, FLOOR 2: 500 sq. ft, FLOOR 3: 438 sq. ft
EXCLUDED AREAS: BASEMENT: 234 sq. ft, PATIO: 98 sq. ft, PORCH: 16 sq. ft,
GARAGE: 404 sq. ft

Floor Plan Created By V1photos.com, Measurements Deamed Highly Reliable But Not Guaranteed.



Disclaimer: Sizes and Dimensions are Approximate, Actual May Vary.



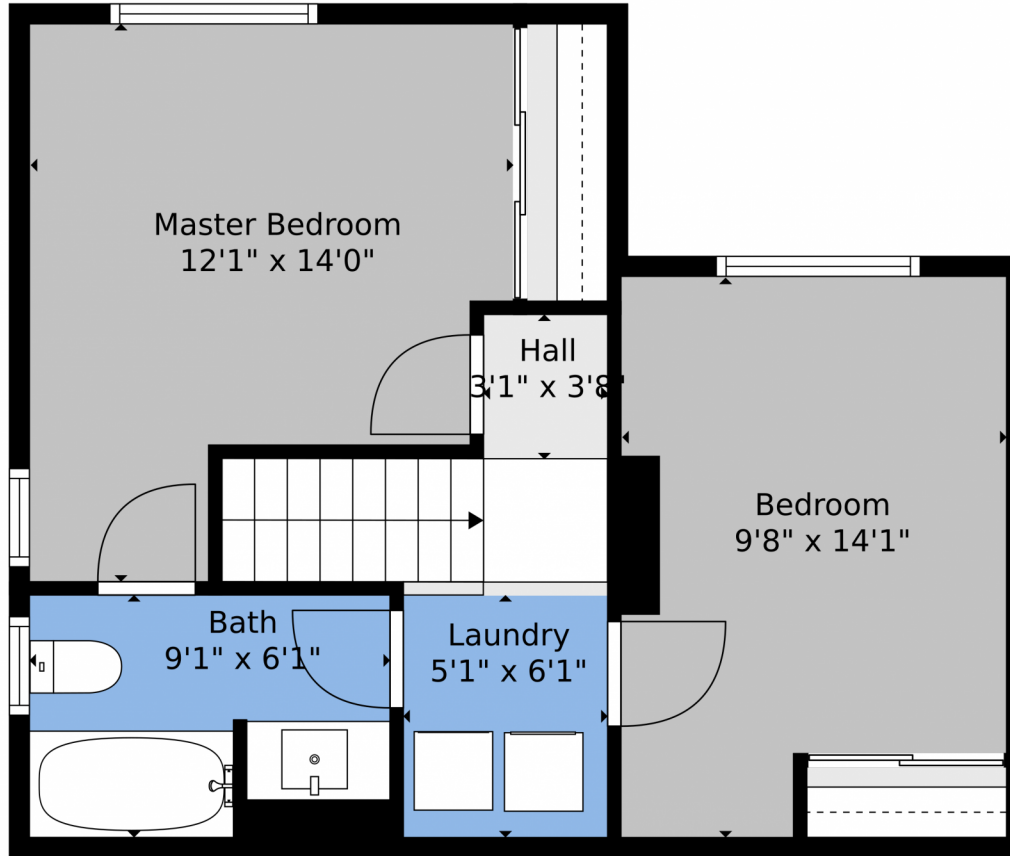
Taylor Haas
303-665-7368
taylorh@coloradorpm.com
<https://www.coloradorpm.com/available-rental-properties-denver>



Scan code
for more
property
details



12554 Forest Drive, Thornton, CO 80241 – Upper Level



TOTAL: 1205 sq. ft
Below Ground: 267 sq. ft, FLOOR 2: 500 sq. ft, FLOOR 3: 438 sq. ft
EXCLUDED AREAS: BASEMENT: 234 sq. ft, PATIO: 98 sq. ft, PORCH: 16 sq. ft,
GARAGE: 404 sq. ft

Floor Plan Created By V1photos.com, Measurements Deamed Highly Reliable But Not Guaranteed.



Disclaimer: Sizes and Dimensions are Approximate, Actual May Vary.

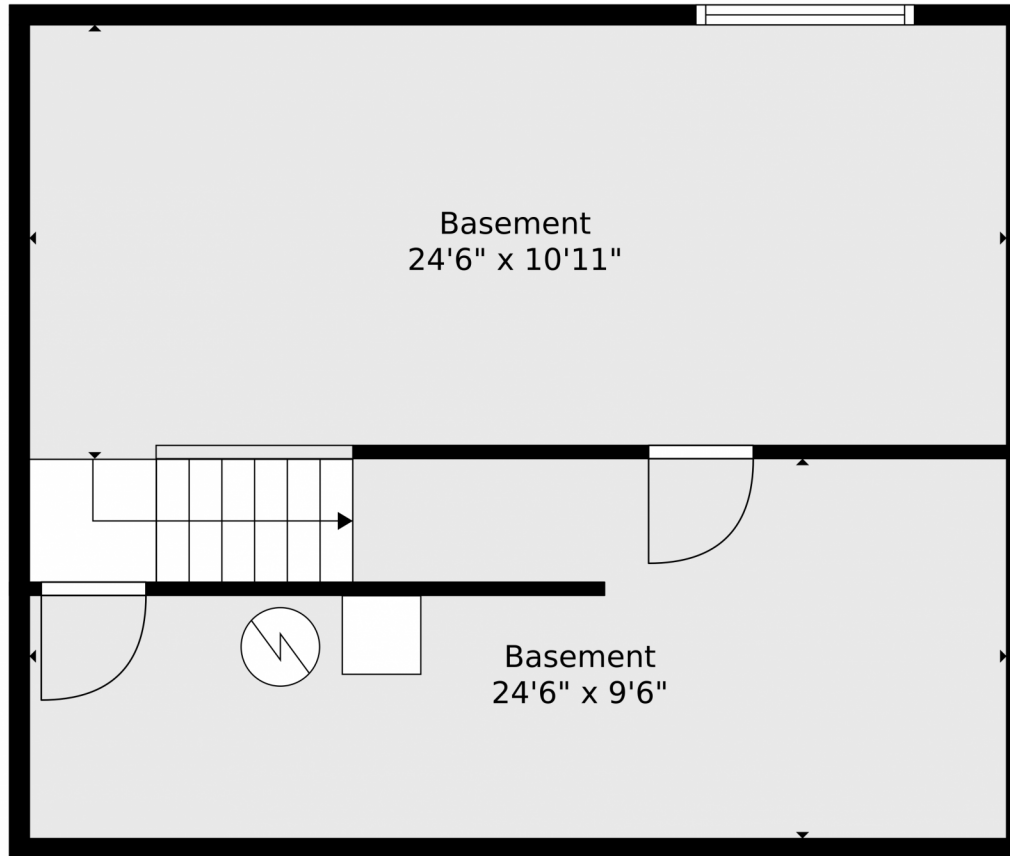


Taylor Haas
303-665-7368
taylorh@coloradorpm.com
<https://www.coloradorpm.com/available-rental-properties-denver>



Scan code
for more
property
details





TOTAL: 1205 sq. ft
Below Ground: 267 sq. ft, FLOOR 2: 500 sq. ft, FLOOR 3: 438 sq. ft
EXCLUDED AREAS: BASEMENT: 234 sq. ft, PATIO: 98 sq. ft, PORCH: 16 sq. ft,
GARAGE: 404 sq. ft

Floor Plan Created By V1photos.com, Measurements Deamed Highly Reliable But Not Guaranteed.



Disclaimer: Sizes and Dimensions are Approximate, Actual May Vary.



Taylor Haas

303-665-7368

taylorh@coloradorpm.com

<https://www.coloradorpm.com/available-rental-properties-denver>



Scan code
for more
property
details



12554 Forest Drive, Thornton, CO 80241 – All Levels



TOTAL: 1205 sq. ft
Below Ground: 267 sq. ft, FLOOR 2: 500 sq. ft, FLOOR 3: 438 sq. ft
EXCLUDED AREAS: BASEMENT: 234 sq. ft, PATIO: 98 sq. ft, PORCH: 16 sq. ft, GARAGE: 404 sq. ft

Floor Plan Created By V1photos.com, Measurements Deamed Highly Reliable But Not Guaranteed.



Disclaimer: Sizes and Dimensions are Approximate, Actual May Vary.



Taylor Haas

303-665-7368

taylorh@coloradorpm.com

<https://www.coloradorpm.com/available-rental-properties-denver>



Scan code
for more
property
details

