



30524 Sun Creek Drive
 Evergreen, CO 80439
 COMMUNITY: Sun Creek



Townhouse



2122 SQFT



3 Beds



2 Baths



2 Car

PROPERTY DETAILS

Welcome to a premium townhome in the centrally located Sun Creek complex of North Evergreen. This unit has been freshly painted and includes new hardwood floors, new carpeting, a new garage door, new light fixtures, and an updated main level bathroom. The open concept floor plan features a great room with 18' ceilings, a stone gas fireplace, and a kitchen that is open to the great room and dining room. The main level also has a primary bedroom and bathroom for convenient one-level living. The private and beautifully landscaped backyard adds to the unit's appeal. The lower level offers two spacious bedrooms, a full bath, and a large office. Conveniently located near shopping, fitness centers, and only a 5-minute drive to downtown Evergreen, Evergreen Lake, Elk Meadows Open Space, Buchanan Rec Center, and Bergan Park shopping. Easy access to downtown Denver and ski resorts. This unit is perfect for any owner or family.

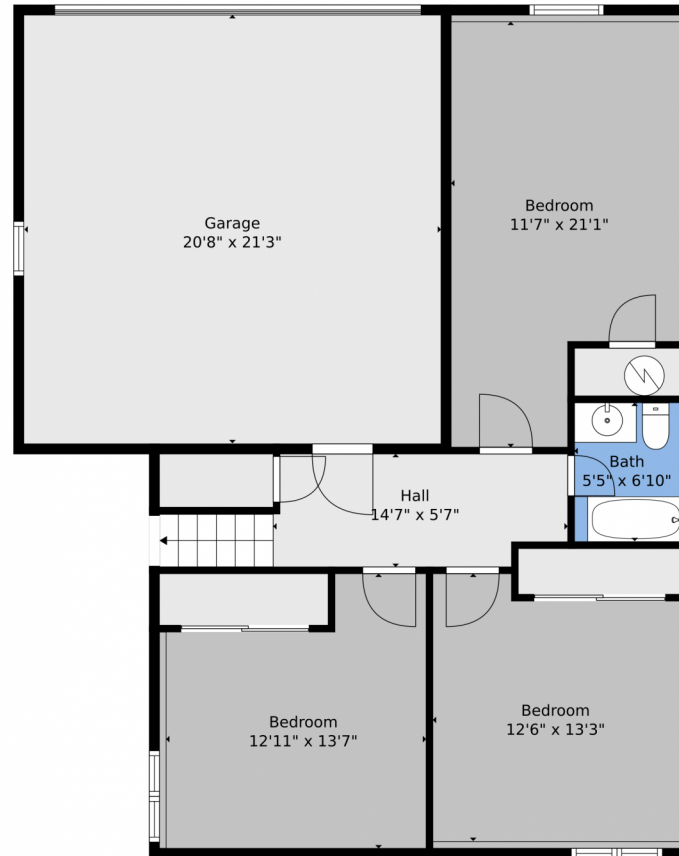


K.C. Golfinopoulos
 720-750-2269
 mountainrealtykc@gmail.com
<https://mountainrealtycolorado.com/>



Scan code
 for more
 property
 details





TOTAL: 2074 sq. ft
BELOW GROUND: 748 sq. ft, FLOOR 2: 1326 sq. ft
EXCLUDED AREAS: GARAGE: 440 sq. ft, UNDEFINED: 13 sq. ft, DECK: 361 sq. ft,
PORCH: 40 sq. ft, FIREPLACE: 16 sq. ft

Floor Plan Created By V1photos.com. Measurements Deamed Highly Reliable But Not Guaranteed.



Disclaimer: Sizes and Dimensions are Approximate, Actual May Vary.

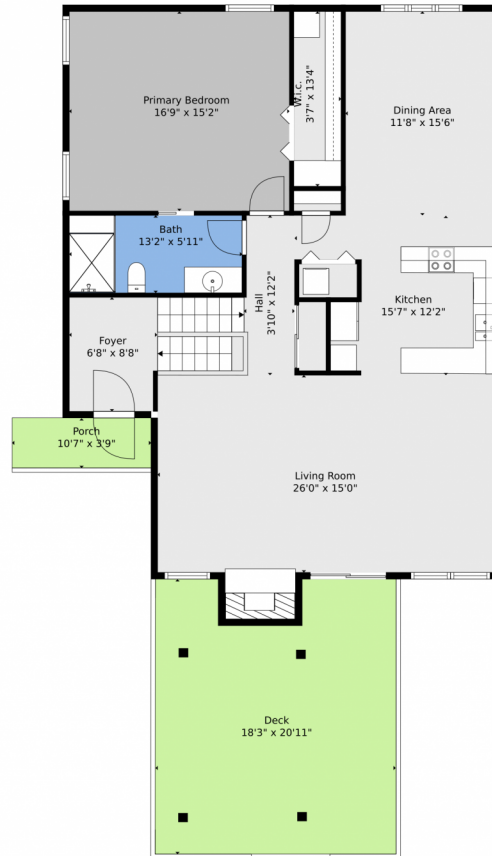


K.C. Golfopoulos
720-750-2269
mountainrealtykc@gmail.com
<https://mountainrealtycolorado.com/>



Scan code
for more
property
details





TOTAL: 2074 sq. ft
BELOW GROUND: 748 sq. ft, FLOOR 2: 1326 sq. ft
EXCLUDED AREAS: GARAGE: 440 sq. ft, UNDEFINED: 13 sq. ft, DECK: 361 sq. ft,
PORCH: 40 sq. ft, FIREPLACE: 16 sq. ft

Floor Plan Created By V1photos.com, Measurements Deamed Highly Reliable But Not Guaranteed.



Disclaimer: Sizes and Dimensions are Approximate, Actual May Vary.



K.C. Golfopoulos
720-750-2269
mountainrealtykc@gmail.com
<https://mountainrealtycolorado.com/>



Scan code
for more
property
details





TOTAL: 2074 sq. ft
BELOW GROUND: 748 sq. ft, FLOOR 2: 1326 sq. ft
EXCLUDED AREAS: GARAGE: 440 sq. ft, UNDEFINED: 13 sq. ft, DECK: 361 sq. ft,
PORCH: 40 sq. ft, FIREPLACE: 16 sq. ft

Floor Plan Created By V1photos.com, Measurements Deamed Highly Reliable But Not Guaranteed.



Disclaimer: Sizes and Dimensions are Approximate, Actual May Vary.



K.C. Golfopoulos
720-750-2269
mountainrealtykc@gmail.com
<https://mountainrealtycolorado.com/>



Scan code
for more
property
details

