



10518 Southwest Westlawn Boulevard
 Port St. Lucie, FL 34987
 COMMUNITY: Belford



Single Family



1382 SQFT



2 Beds



2 Baths



2 Car



0.15 Acre

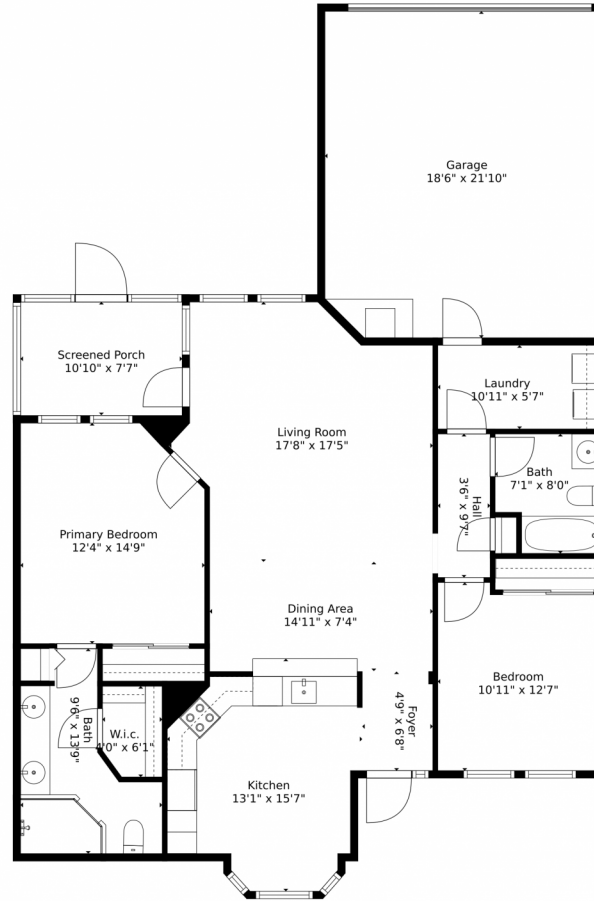


Jason M Coley
 772-201-5229
 jason@teamcoley.com
<https://teamcoley.asrefl.com/>



Scan code
 for more
 property
 details





Measurements Calculated By V1photos.com Are Deemed Highly Reliable But Not Guaranteed

Disclaimer: Sizes and Dimensions are Approximate, Actual May Vary.



Jason M Coley
772-201-5229
jason@teamcoley.com
<https://teamcoley.asrefl.com/>

