







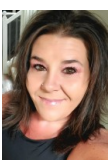
**OPPORTUNITY AWAITS IN HUTCHINSON HEIGHTS!!!**



-  Single Family
-  2150 SQFT
-  4 Beds
-  2/1 Baths
-  2 Car
-  0.17 Acre

## PROPERTY DETAILS

FANTASTIC OPPORTUNITY IN GREAT LOCATION!! STEP INSIDE THIS WELL MAINTAINED SPACIOUS TRI-LEVEL AND CREATE YOUR OWN PERSONAL VISION. MAIN FLOOR FEATURES INCLUDE LARGE FORMAL LIVING AND DINING ROOMS WITH NEW CARPET, KITCHEN WITH BREAKFAST NOOK OPEN TO HUGE LOWER LEVEL FAMILY ROOM WITH GAS FIREPLACE, POWDER BATH AND LAUNDRY. UPSTAIRS YOU WILL FIND THE LARGE PRIMARY SUITE WITH 3/4 BATH, 3 ADDITIONAL BEDROOMS AND FULL BATH. THE UNFINISHED BASEMENT OFFERS THE CHANCE TO CREATE ADDITIONAL LIVING SPACE. LARGE COVERED PATIO IN BACKYARD. LOTS OF TREES AND OUTDOOR LIVING SPACE. LOCATED 1 BLOCK FROM ELDORADO PARK, WITH GREAT ACCESS TO HIGHWAYS, SHOPPING, RESTAURANTS AND MORE! PROPERTY IS BEING SOLD AS-IS.



**RaNae Rodriguez**  
303-875-4091  
ranae@mscadvisors.com  
<http://www.mscadvisors.com>



# 2913 South Richfield St., Aurora, CO 80013 – All Levels

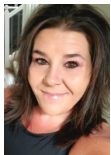


**TOTAL: 1938 sq. ft**  
Below Ground: 0 sq. ft, FLOOR 2: 441 sq. ft, FLOOR 3: 652 sq. ft, FLOOR 4: 845 sq. ft  
EXCLUDED AREAS: CRAWL SPACE: 418 sq. ft, BASEMENT: 663 sq. ft, GARAGE: 407 sq. ft,  
SHED: 190 sq. ft, COVERED PATIO: 400 sq. ft, PATIO: 634 sq. ft,  
FIREPLACE: 11 sq. ft, PORCH: 155 sq. ft, LOW CEILING: 73 sq. ft

Floor Plan Created By V1photos.com, Measurements Deamed Highly Reliable But Not Guaranteed.



Disclaimer: Sizes and Dimensions are Approximate, Actual May Vary.



**RaNae Rodriguez**  
303-875-4091  
ranae@mscadvisors.com  
<http://www.mscadvisors.com>

