


 Single Family

 2400 SQFT

 3 Beds

 2 Baths

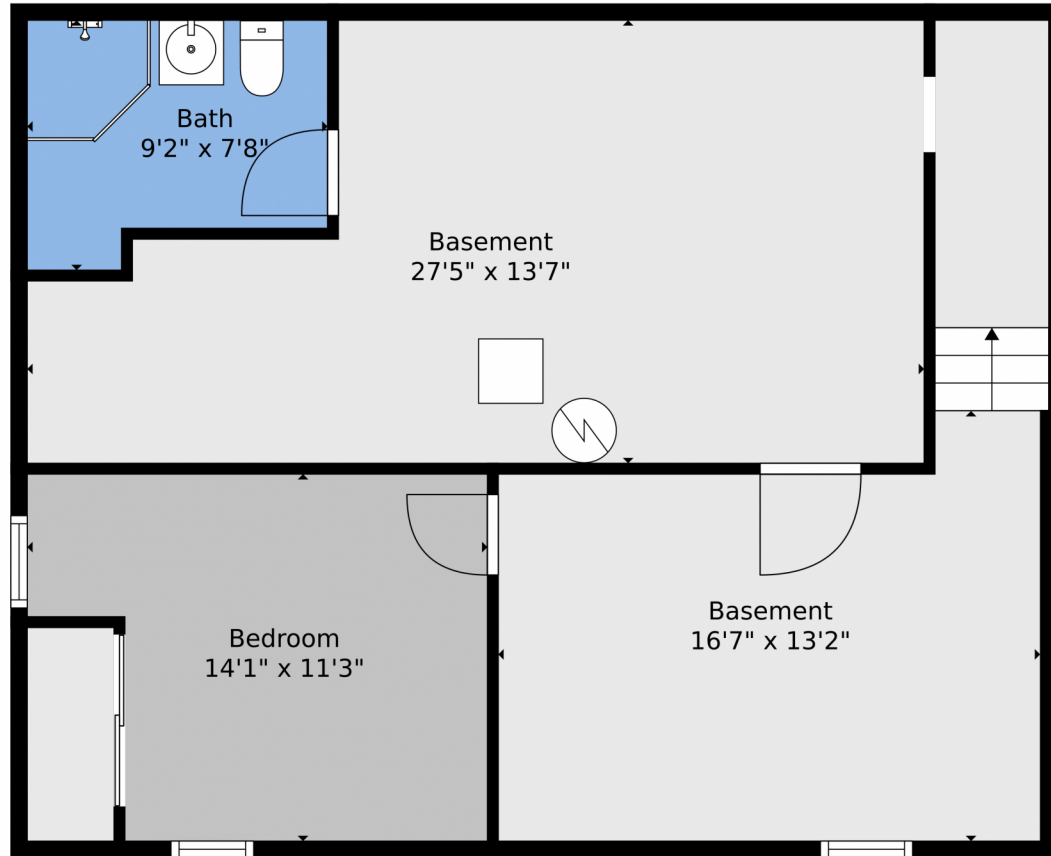
 2 Car



**Jordan Kermes**  
952-956-2958  
jkermes@wedgewoodhomesrealty.com  
<https://colorado.wedgewoodhomesrealty.com>



3128 Cascade Avenue, Pueblo, CO 81008 – Lower Level



**TOTAL: 1263 sq. ft**  
Below Ground: 478 sq. ft, FLOOR 2: 785 sq. ft  
EXCLUDED AREAS: BASEMENT: 304 sq. ft, PORCH: 21 sq. ft, PATIO: 15 sq. ft  
Floor Plan Created By V1photos.com, Measurements Deamed Highly Reliable But Not Guaranteed.



Disclaimer: Sizes and Dimensions are Approximate, Actual May Vary.



**Jordan Kermes**  
952-956-2958  
jkermes@wedgewoodhomesrealty.com  
<https://colorado.wedgewoodhomesrealty.com>



# 3128 Cascade Avenue, Pueblo, CO 81008 – Main Level



**TOTAL: 1263 sq. ft**  
Below Ground: 478 sq. ft, FLOOR 2: 785 sq. ft  
EXCLUDED AREAS: BASEMENT: 304 sq. ft, PORCH: 21 sq. ft, PATIO: 15 sq. ft  
Floor Plan Created By V1photos.com, Measurements Deamed Highly Reliable But Not Guaranteed.



Disclaimer: Sizes and Dimensions are Approximate, Actual May Vary.

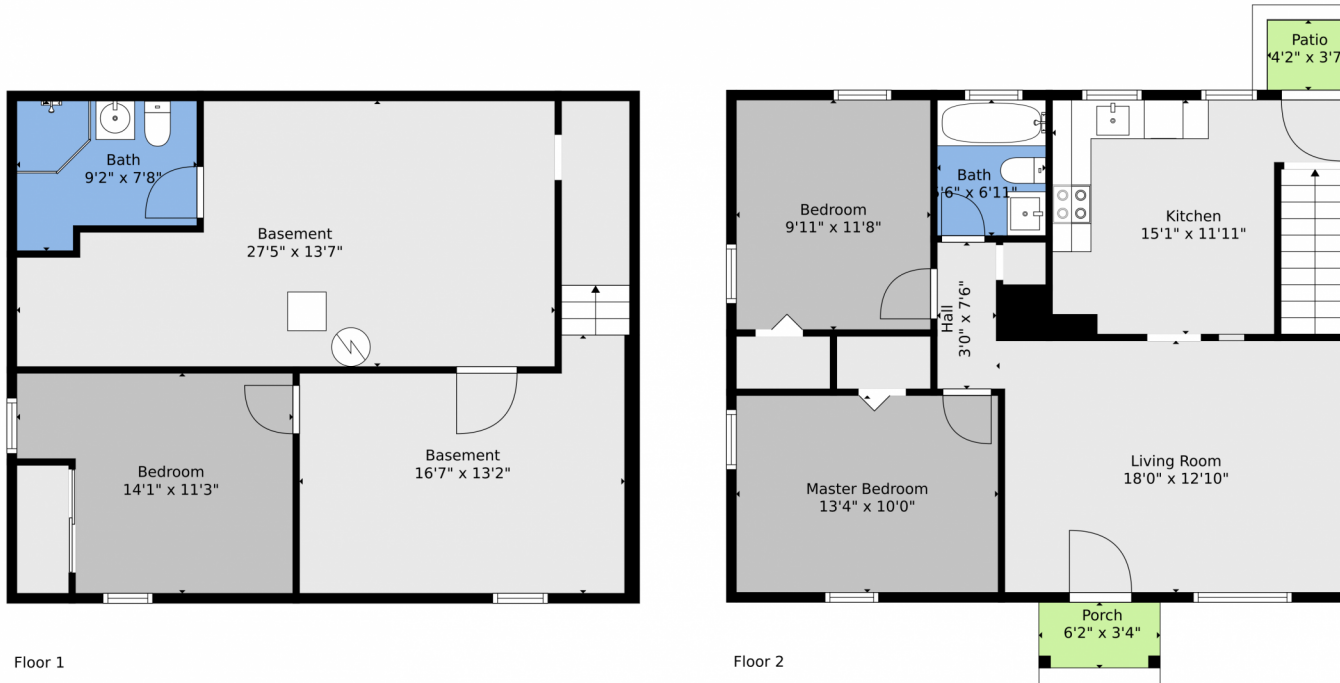


**Jordan Kermes**  
952-956-2958  
jkermes@wedgewoodhomesrealty.com  
<https://colorado.wedgewoodhomesrealty.com>



Scan code  
for more  
property  
details

# 3128 Cascade Avenue, Pueblo, CO 81008 – All Levels



**TOTAL: 1263 sq. ft**  
Below Ground: 478 sq. ft, FLOOR 2: 785 sq. ft  
EXCLUDED AREAS: BASEMENT: 304 sq. ft, PORCH: 21 sq. ft, PATIO: 15 sq. ft  
Floor Plan Created By V1photos.com, Measurements Deamed Highly Reliable But Not Guaranteed.



Disclaimer: Sizes and Dimensions are Approximate, Actual May Vary.



**Jordan Kermes**  
952-956-2958  
jkermes@wedgewoodhomesrealty.com  
<https://colorado.wedgewoodhomesrealty.com>



Scan code  
for more  
property  
details

