



1201 Hughesville Road
 Black Hawk, CO 80422
 COMMUNITY: Missouri Lakes

MLS # 7894787
 PRICE
 \$1,279,000



Single Family



2438 SQFT



4 Beds



2/1 Baths



1 Acre

PROPERTY DETAILS

This fully-furnished home is surrounded by large aspen trees, and combines modern touches with rustic charm and two adjacent 1-acre lots of wooded meadow, with breathtaking views of Mt. Blue Sky - just an hour from Denver and minutes from I-70 and the Peak-to-Peak Highway!



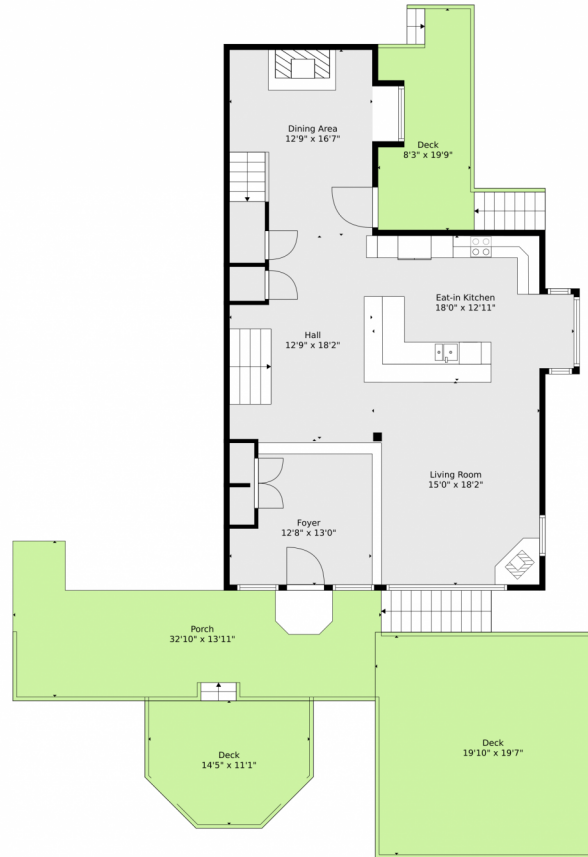
Wolff Real Estate Group
 719-459-9653
 wolffregroup@gmail.com
<https://www.WolffRealEstateGroup.com>



Scan code
 for more
 property
 details



1201 Hughesville Road, Black Hawk, CO 80422 – main level



TOTAL: 2643 sq. ft
Below Ground: 0 sq. ft, FLOOR 2: 736 sq. ft, FLOOR 3: 1175 sq. ft, FLOOR 4: 732 sq. ft
EXCLUDED AREAS: WORKSHOP: 255 sq. ft, STORAGE: 121 sq. ft, CARPORT: 464 sq. ft,
DECK: 730 sq. ft, PORCH: 378 sq. ft, BAY WINDOW: 14 sq. ft

Floor Plan Created By V1photos.com, Measurements Deamed Highly Reliable But Not Guaranteed.



Disclaimer: Sizes and Dimensions are Approximate, Actual May Vary.



Wolff Real Estate Group

719-459-9653

wolffregroup@gmail.com

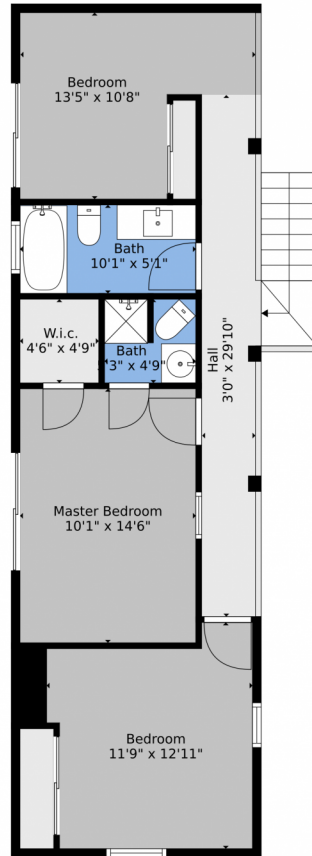
<https://www.WolffRealEstateGroup.com>



Scan code
for more
property
details



1201 Hughesville Road, Black Hawk, CO 80422 – upper level



TOTAL: 2643 sq. ft
Below Ground: 0 sq. ft, FLOOR 2: 736 sq. ft, FLOOR 3: 1175 sq. ft, FLOOR 4: 732 sq. ft
EXCLUDED AREAS: WORKSHOP: 255 sq. ft, STORAGE: 121 sq. ft, CARPORT: 464 sq. ft,
DECK: 730 sq. ft, PORCH: 378 sq. ft, BAY WINDOW: 14 sq. ft

Floor Plan Created By V1photos.com, Measurements Deamed Highly Reliable But Not Guaranteed.



Disclaimer: Sizes and Dimensions are Approximate, Actual May Vary.



Wolff Real Estate Group

719-459-9653

wolffregroup@gmail.com

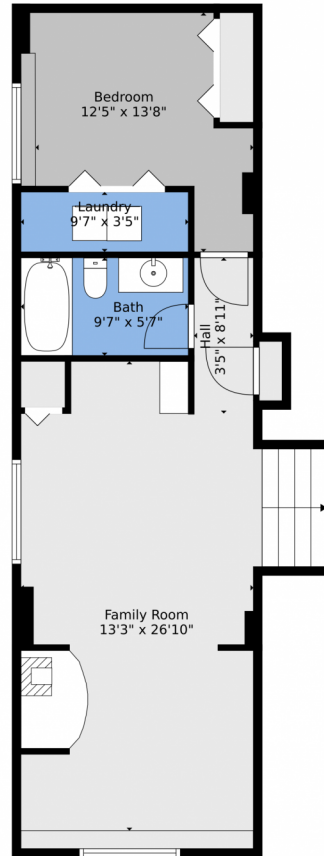
<https://www.WolffRealEstateGroup.com>



Scan code
for more
property
details



1201 Hughesville Road, Black Hawk, CO 80422 – lower level



TOTAL: 2643 sq. ft
Below Ground: 0 sq. ft, FLOOR 2: 736 sq. ft, FLOOR 3: 1175 sq. ft, FLOOR 4: 732 sq. ft
EXCLUDED AREAS: WORKSHOP: 255 sq. ft, STORAGE: 121 sq. ft, CARPORT: 464 sq. ft,
DECK: 730 sq. ft, PORCH: 378 sq. ft, BAY WINDOW: 14 sq. ft

Floor Plan Created By V1photos.com, Measurements Deamed Highly Reliable But Not Guaranteed.



Disclaimer: Sizes and Dimensions are Approximate, Actual May Vary.



Wolff Real Estate Group

719-459-9653

wolffregroup@gmail.com

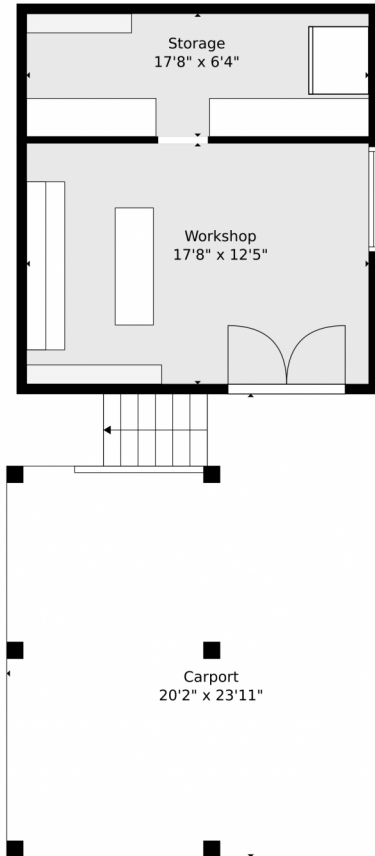
<https://www.WolffRealEstateGroup.com>



Scan code
for more
property
details



1201 Hughesville Road, Black Hawk, CO 80422 – shop



TOTAL: 2643 sq. ft
Below Ground: 0 sq. ft, FLOOR 2: 736 sq. ft, FLOOR 3: 1175 sq. ft, FLOOR 4: 732 sq. ft
EXCLUDED AREAS: WORKSHOP: 255 sq. ft, STORAGE: 121 sq. ft, CARPORT: 464 sq. ft,
DECK: 730 sq. ft, PORCH: 378 sq. ft, BAY WINDOW: 14 sq. ft

Floor Plan Created By V1photos.com, Measurements Deamed Highly Reliable But Not Guaranteed.



Disclaimer: Sizes and Dimensions are Approximate, Actual May Vary.



Wolff Real Estate Group

719-459-9653

wolffregroup@gmail.com

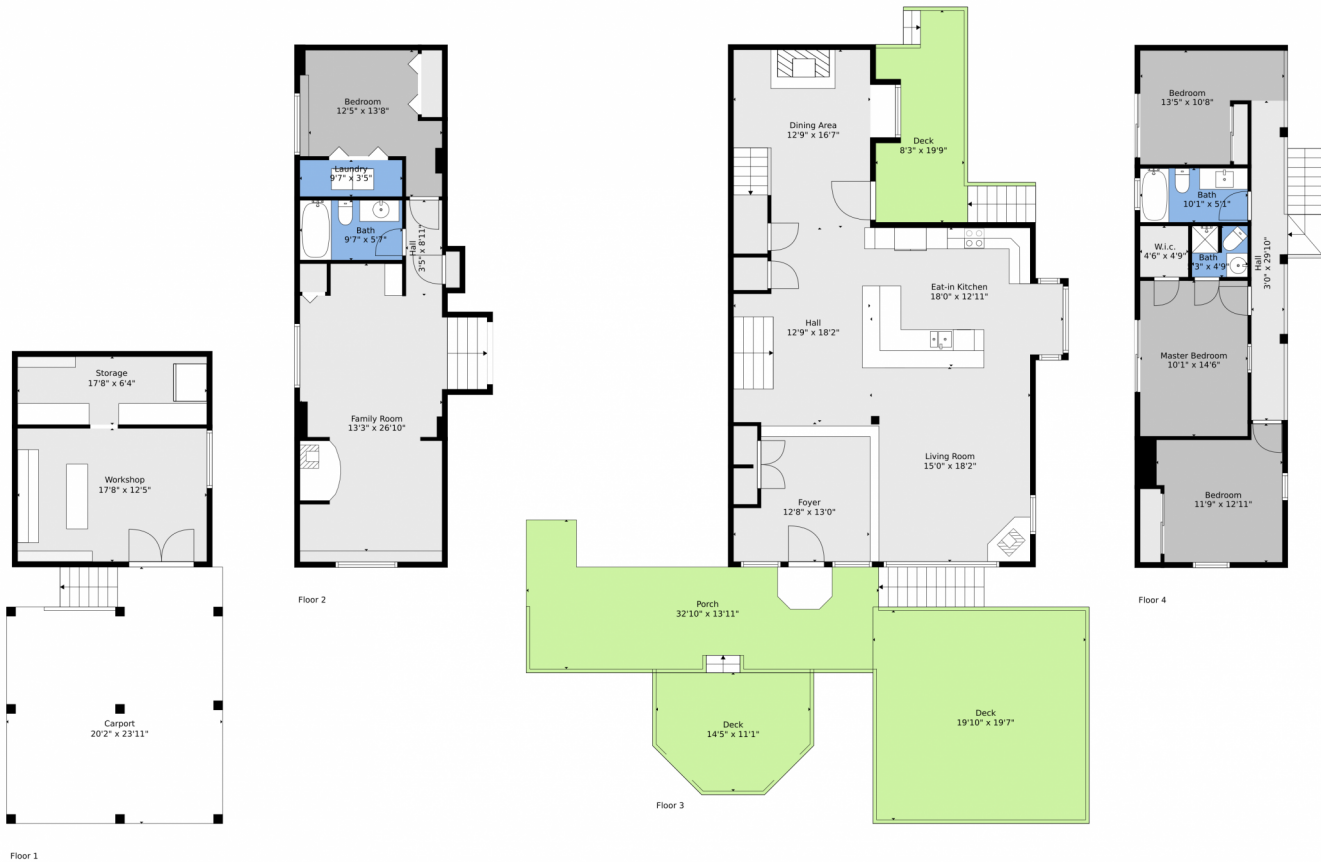
<https://www.WolffRealEstateGroup.com>



Scan code
for more
property
details



1201 Hughesville Road, Black Hawk, CO 80422 – all levels



TOTAL: 2643 sq. ft
Below Ground: 0 sq. ft, FLOOR 2: 736 sq. ft, FLOOR 3: 1175 sq. ft, FLOOR 4: 732 sq. ft
EXCLUDED AREAS: WORKSHOP: 255 sq. ft, STORAGE: 121 sq. ft, CARPORT: 464 sq. ft,
DECK: 730 sq. ft, PORCH: 378 sq. ft, BAY WINDOW: 14 sq. ft

Floor Plan Created By V1photos.com, Measurements Deamed Highly Reliable But Not Guaranteed.



Disclaimer: Sizes and Dimensions are Approximate, Actual May Vary.



Wolff Real Estate Group

719-459-9653

wolffregroup@gmail.com

<https://www.WolffRealEstateGroup.com>



Scan code
for more
property
details

