



Single Family



2720 SQFT



4 Beds



2 Baths



0.24 Acre



**Paul D. Andrews**

720-270-1306

andrews.realtor@gmail.com

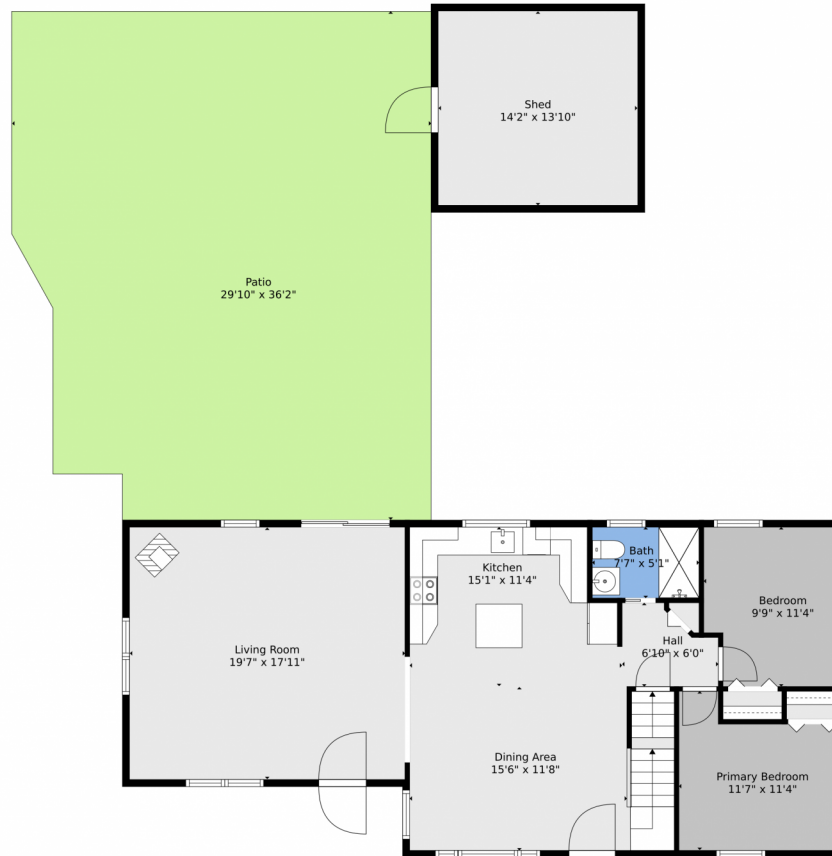
<https://www.greaterdenverhomesite.com/paul-andrews/>



Scan code  
for more  
property  
details



# 350 West Spaulding Street, Lafayette, CO 80026 – Main Level



**TOTAL: 1349 sq. ft**  
BELOW GROUND: 0 sq. ft, FLOOR 2: 1066 sq. ft, FLOOR 3: 283 sq. ft  
EXCLUDED AREAS: BASEMENT: 687 sq. ft, SHED: 197 sq. ft, PATIO: 1012 sq. ft,  
LOW CEILING: 148 sq. ft

Floor Plan Created By V1photos.com, Measurements Deamed Highly Reliable But Not Guaranteed.



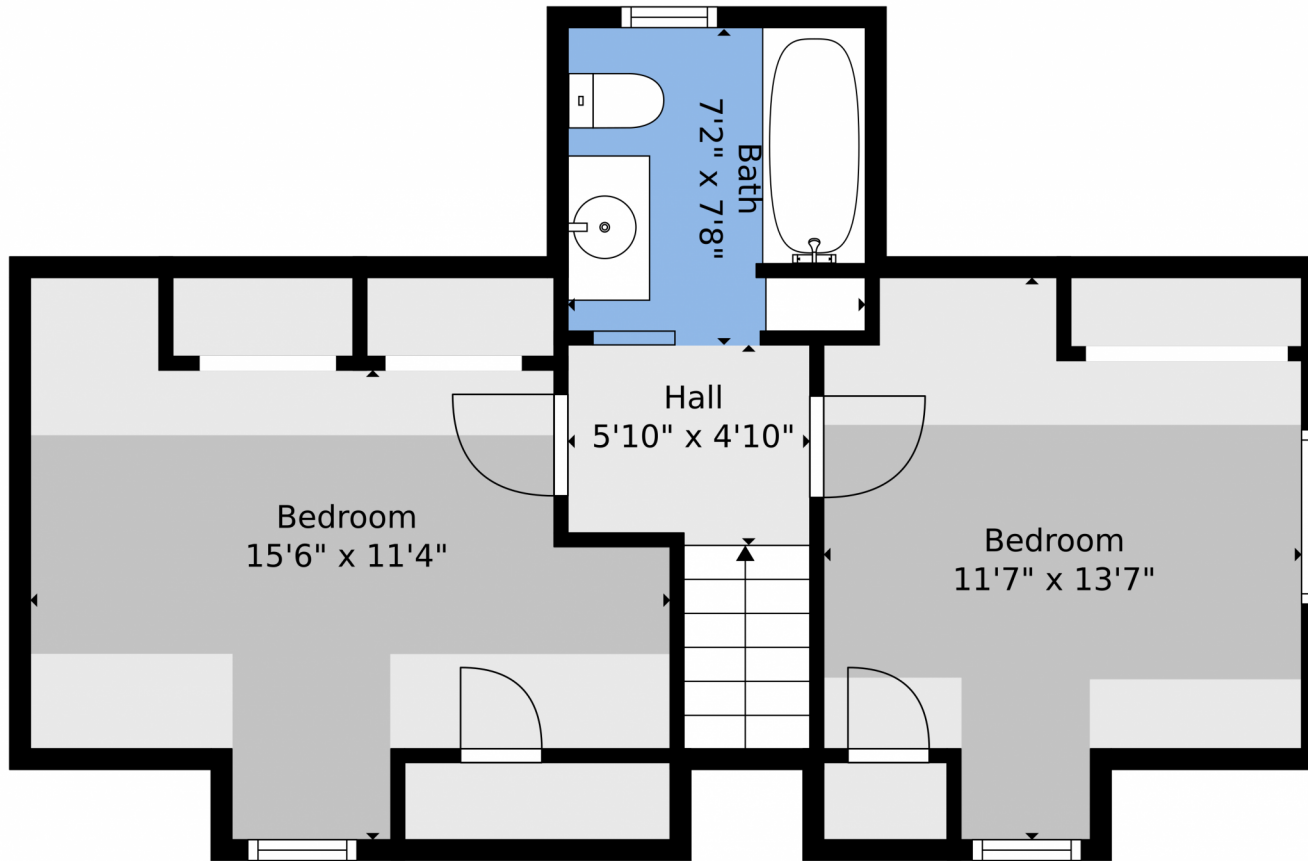
Disclaimer: Sizes and Dimensions are Approximate, Actual May Vary.



**Paul D. Andrews**  
720-270-1306  
andrews.realtor@gmail.com  
<https://www.greaterdenverhomesite.com/paul-andrews/>



350 West Spaulding Street, Lafayette, CO 80026 – Upper Level



**TOTAL: 1349 sq. ft**  
BELOW GROUND: 0 sq. ft, FLOOR 2: 1066 sq. ft, FLOOR 3: 283 sq. ft  
EXCLUDED AREAS: BASEMENT: 687 sq. ft, SHED: 197 sq. ft, PATIO: 1012 sq. ft,  
LOW CEILING: 148 sq. ft

Floor Plan Created By V1photos.com, Measurements Deamed Highly Reliable But Not Guaranteed.

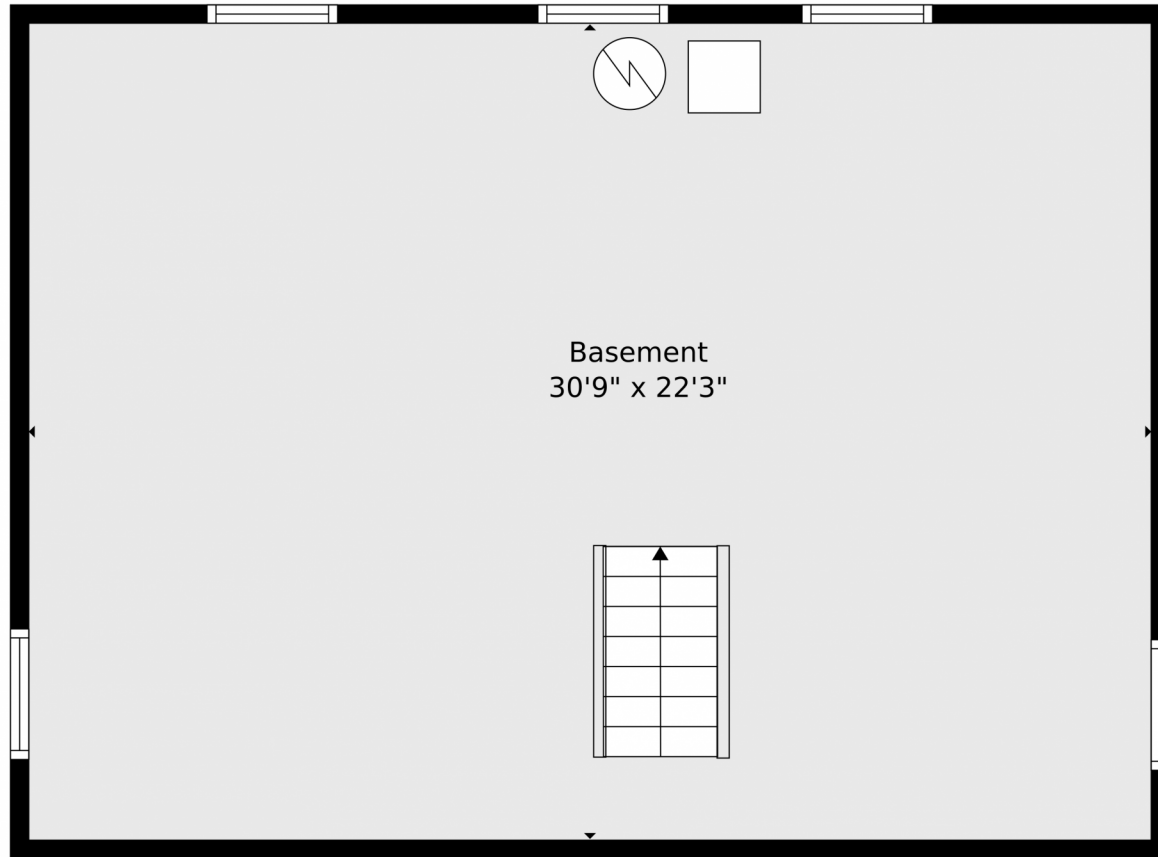


Disclaimer: Sizes and Dimensions are Approximate, Actual May Vary.



**Paul D. Andrews**  
720-270-1306  
andrews.realtor@gmail.com  
<https://www.greaterdenverhomesite.com/paul-andrews/>





Basement  
30'9" x 22'3"



**TOTAL: 1349 sq. ft**  
BELOW GROUND: 0 sq. ft, FLOOR 2: 1066 sq. ft, FLOOR 3: 283 sq. ft  
EXCLUDED AREAS: BASEMENT: 687 sq. ft, SHED: 197 sq. ft, PATIO: 1012 sq. ft,  
LOW CEILING: 148 sq. ft

Floor Plan Created By V1photos.com, Measurements Deamed Highly Reliable But Not Guaranteed.



Disclaimer: Sizes and Dimensions are Approximate, Actual May Vary.



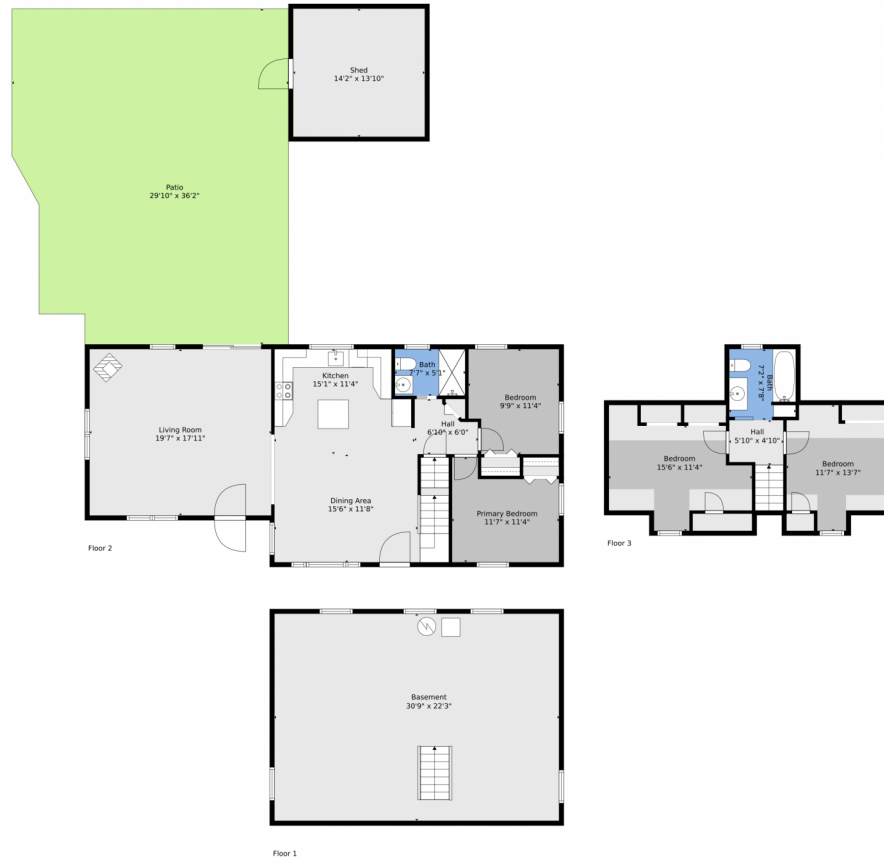
**Paul D. Andrews**  
720-270-1306  
andrews.realtor@gmail.com  
<https://www.greaterdenverhomesite.com/paul-andrews/>



Scan code  
for more  
property  
details



# 350 West Spaulding Street, Lafayette, CO 80026 – All Levels



**TOTAL: 1349 sq. ft**  
BELOW GROUND: 0 sq. ft, FLOOR 2: 1066 sq. ft, FLOOR 3: 283 sq. ft  
EXCLUDED AREAS: BASEMENT: 687 sq. ft, SHED: 197 sq. ft, PATIO: 1012 sq. ft,  
LOW CEILING: 148 sq. ft

Floor Plan Created By V1photos.com, Measurements Deamed Highly Reliable But Not Guaranteed.



Disclaimer: Sizes and Dimensions are Approximate, Actual May Vary.



**Paul D. Andrews**  
720-270-1306  
andrews.realtor@gmail.com  
<https://www.greaterdenverhomesite.com/paul-andrews/>



Scan code  
for more  
property  
details

