



 Single Family  3780 SQFT



Suzanne Ekeler  
970-590-4841  
suzanne.ekeler@windermere.com



# 1753 Vista Point Lane, Severance, CO 80550 – Main Level



**TOTAL: 3262 sq. ft**  
Below Ground: 1377 sq. ft, FLOOR 2: 1885 sq. ft  
EXCLUDED AREAS: ELECTRICAL ROOM: 114 sq. ft, STORAGE: 314 sq. ft, COVERED PATIO: 125 sq. ft,  
GARAGE: 857 sq. ft, DECK: 167 sq. ft, PORCH: 104 sq. ft

Floor Plan Created By V1photos.com, Measurements Deamed Highly Reliable But Not Guaranteed.



Disclaimer: Sizes and Dimensions are Approximate, Actual May Vary.



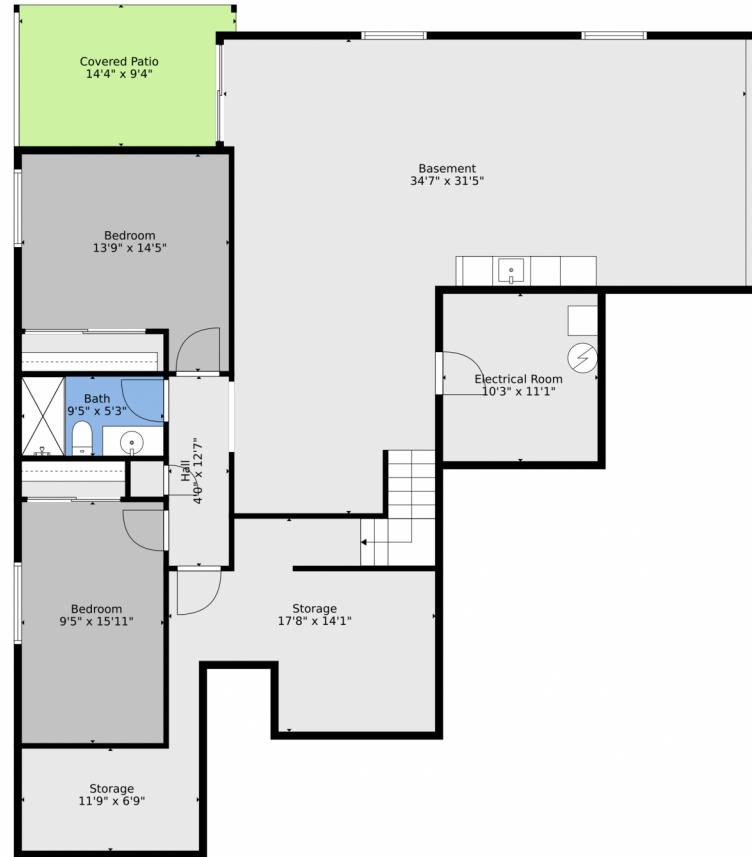
Suzanne Ekeler  
970-590-4841  
suzanne.ekeler@windermere.com



Scan code  
for more  
property  
details



# 1753 Vista Point Lane, Severance, CO 80550 – Lower Level



**TOTAL: 3262 sq. ft**  
Below Ground: 1377 sq. ft, FLOOR 2: 1885 sq. ft  
EXCLUDED AREAS: ELECTRICAL ROOM: 114 sq. ft, STORAGE: 314 sq. ft, COVERED PATIO: 125 sq. ft,  
GARAGE: 857 sq. ft, DECK: 167 sq. ft, PORCH: 104 sq. ft

Floor Plan Created By V1photos.com. Measurements Deamed Highly Reliable But Not Guaranteed.

Disclaimer: Sizes and Dimensions are Approximate, Actual May Vary.

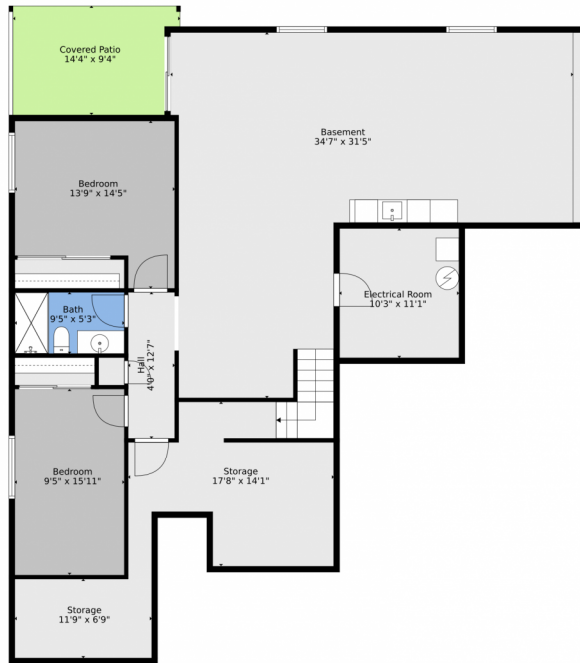


Suzanne Ekeler  
970-590-4841  
suzanne.ekeler@windermere.com



Scan code  
for more  
property  
details

# 1753 Vista Point Lane, Severance, CO 80550 – All Levels



Floor 1



Floor 2



**TOTAL: 3262 sq. ft**  
 Below Ground: 1377 sq. ft, FLOOR 2: 1885 sq. ft  
 EXCLUDED AREAS: ELECTRICAL ROOM: 114 sq. ft, STORAGE: 314 sq. ft, COVERED PATIO: 125 sq. ft,  
 GARAGE: 857 sq. ft, DECK: 167 sq. ft, PORCH: 104 sq. ft

Floor Plan Created By V1photos.com. Measurements Deamed Highly Reliable But Not Guaranteed.



Disclaimer: Sizes and Dimensions are Approximate, Actual May Vary.



Suzanne Ekeler  
 970-590-4841  
 suzanne.ekeler@windermere.com



Scan code  
 for more  
 property  
 details