



Buy | Sell | Build | Develop | Consult

8471 High Ridge Court  
Castle Pines, CO 80108



8471 High Ridge Court, Castle Pines, CO 80108 - floorplan\_all\_0



Single Family



5235 SQFT



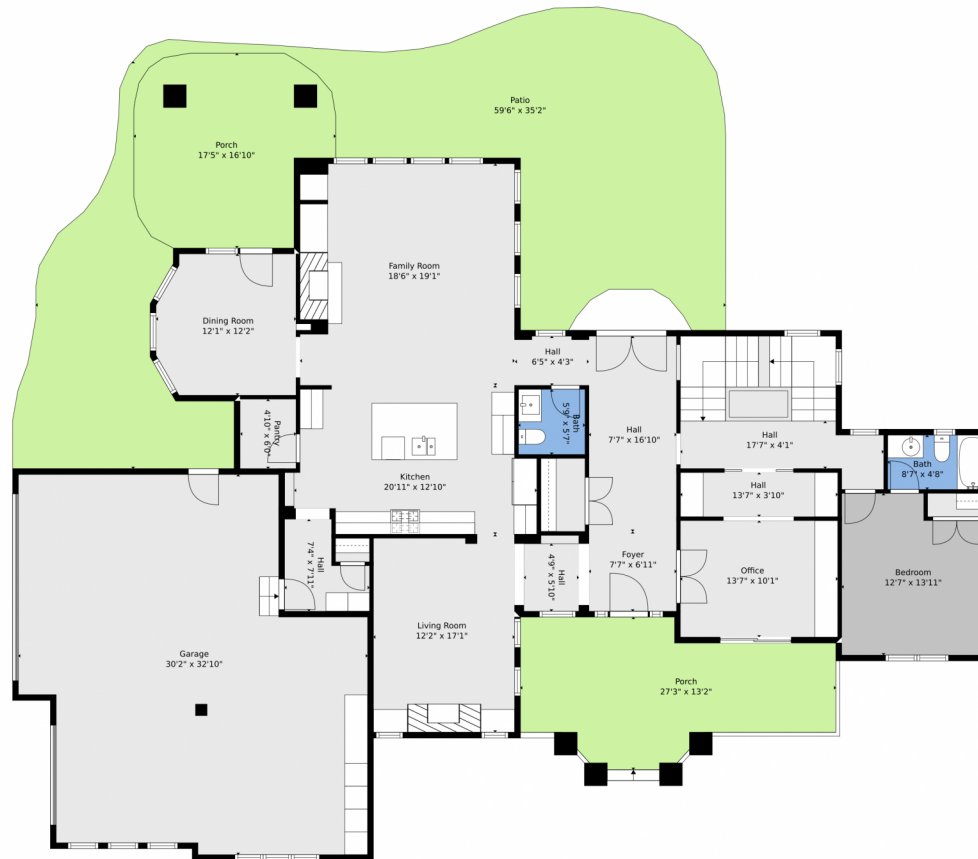
**Andrew Wolfe**  
503-819-2948  
andrew@andrewjwolfe.com



Scan code  
for more  
property  
details



# 8471 High Ridge Court, Castle Pines, CO 80108 – Main Level



**TOTAL: 4826 sq. ft**  
Below Ground: 1444 sq. ft, FLOOR 2: 1972 sq. ft, FLOOR 3: 1410 sq. ft  
EXCLUDED AREAS: BASEMENT: 341 sq. ft, GARAGE: 837 sq. ft, PORCH: 515 sq. ft,  
PATIO: 957 sq. ft, OPEN TO BELOW: 141 sq. ft

Floor Plan Created By V1photos.com. Measurements Deamed Highly Reliable But Not Guaranteed.



Disclaimer: Sizes and Dimensions are Approximate, Actual May Vary.



**Andrew Wolfe**  
503-819-2948  
andrew@andrewjwolfe.com



# 8471 High Ridge Court, Castle Pines, CO 80108 – Upper Level



**TOTAL: 4826 sq. ft**  
Below Ground: 1444 sq. ft, FLOOR 2: 1972 sq. ft, FLOOR 3: 1410 sq. ft  
EXCLUDED AREAS: BASEMENT: 341 sq. ft, GARAGE: 837 sq. ft, PORCH: 515 sq. ft,  
PATIO: 957 sq. ft, OPEN TO BELOW: 141 sq. ft

Floor Plan Created By V1photos.com, Measurements Deamed Highly Reliable But Not Guaranteed.



Disclaimer: Sizes and Dimensions are Approximate, Actual May Vary.

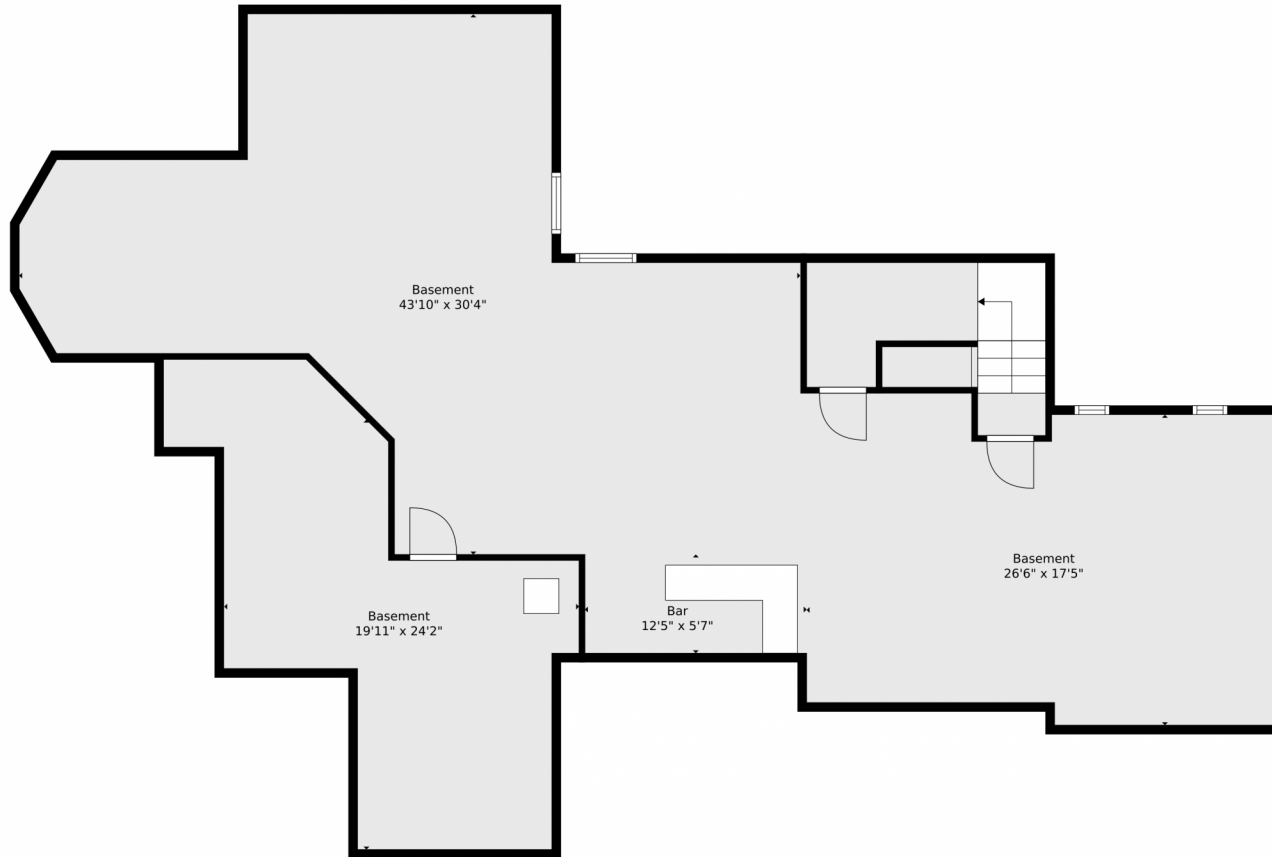


**Andrew Wolfe**  
503-819-2948  
andrew@andrewjwolfe.com



Scan code for more property details

# 8471 High Ridge Court, Castle Pines, CO 80108 – Lower Level



**TOTAL: 4826 sq. ft**  
Below Ground: 1444 sq. ft, FLOOR 2: 1972 sq. ft, FLOOR 3: 1410 sq. ft  
EXCLUDED AREAS: BASEMENT: 341 sq. ft, GARAGE: 837 sq. ft, PORCH: 515 sq. ft,  
PATIO: 957 sq. ft, OPEN TO BELOW: 141 sq. ft

Floor Plan Created By V1photos.com. Measurements Deamed Highly Reliable But Not Guaranteed.



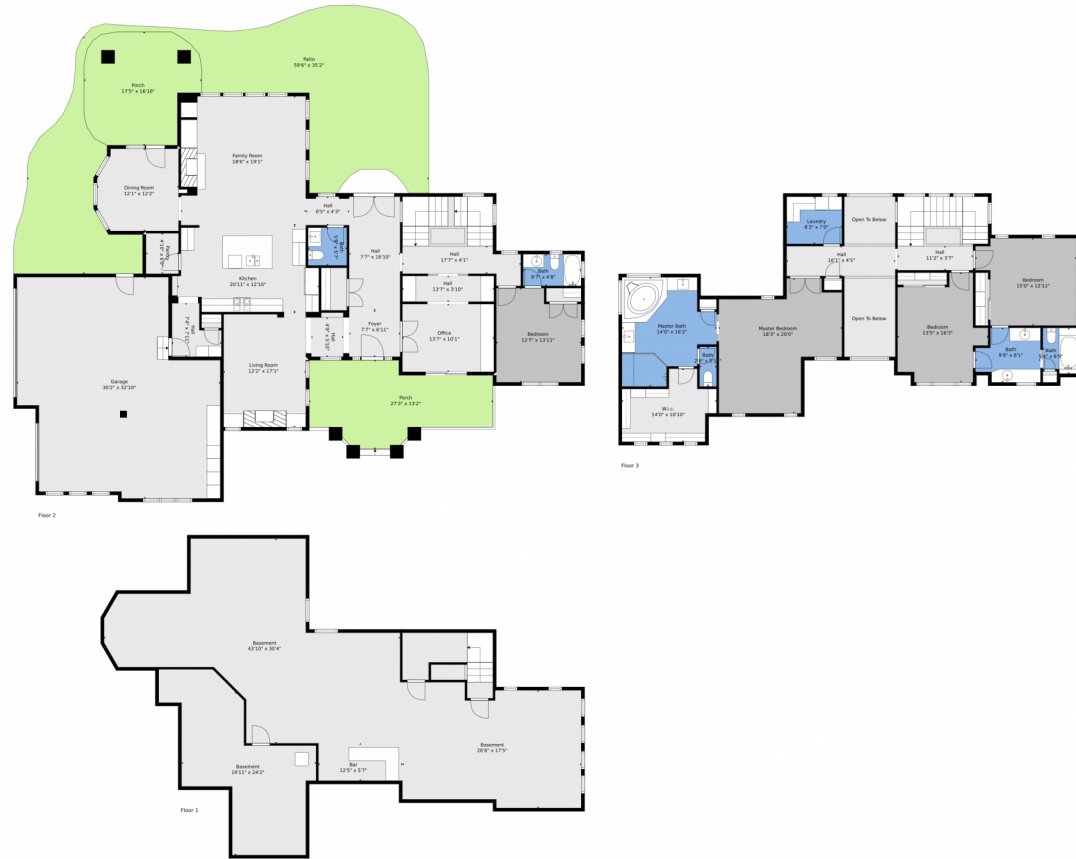
Disclaimer: Sizes and Dimensions are Approximate, Actual May Vary.



**Andrew wolfe**  
503-819-2948  
andrew@andrewjwolfe.com



# 8471 High Ridge Court, Castle Pines, CO 80108 – All Levels



**TOTAL: 4826 sq. ft**  
 Below Ground: 1444 sq. ft, FLOOR 2: 1972 sq. ft, FLOOR 3: 1410 sq. ft  
 EXCLUDED AREAS: BASEMENT: 341 sq. ft, GARAGE: 837 sq. ft, PORCH: 515 sq. ft,  
 PATIO: 957 sq. ft, OPEN TO BELOW: 141 sq. ft

Floor Plan Created By V1photos.com, Measurements Deamed Highly Reliable But Not Guaranteed.



Disclaimer: Sizes and Dimensions are Approximate, Actual May Vary.



**Andrew wolfe**  
 503-819-2948  
 andrew@andrewjwolfe.com

