



Single Family



3498 SQFT



6 Beds



4/1 Baths



3 Car

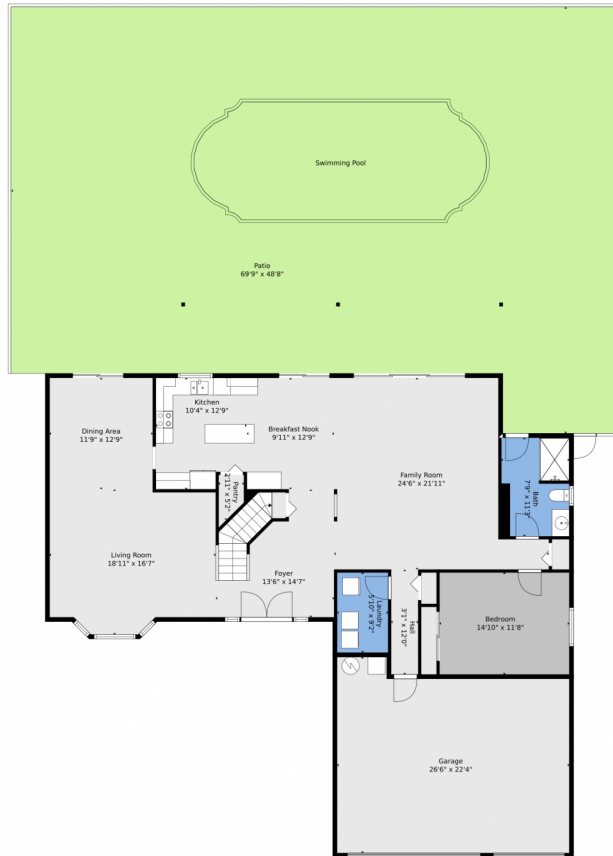


Christine Viscovich P.A.
954-290-8042
christineflorida@bellsouth.net



Scan code
for more
property
details





TOTAL: 3311 sq. ft
FLOOR 1: 1738 sq. ft, FLOOR 2: 1573 sq. ft
EXCLUDED AREAS: GARAGE: 541 sq. ft, PATIO: 2615 sq. ft, SWIMMING POOL: 400 sq. ft,
OPEN TO BELOW: 117 sq. ft

Floor Plan Created By V1photos.com, Measurements Deamed Highly Reliable But Not Guaranteed.

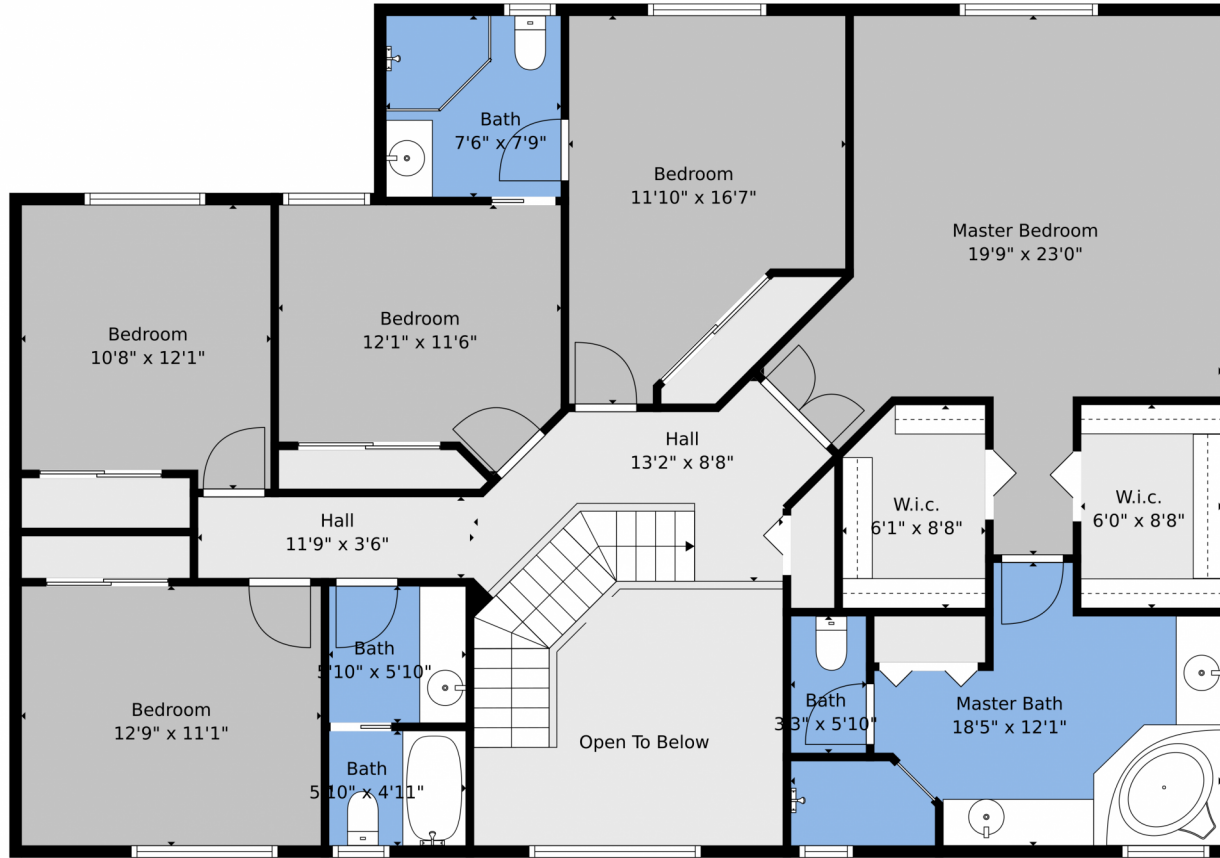
Disclaimer: Sizes and Dimensions are Approximate, Actual May Vary.



Christine Viscovich P.A.
954-290-8042
christineflorida@bellsouth.net



228 Fairmont Way, Weston, FL 33326 – 2nd Level



TOTAL: 3311 sq. ft
FLOOR 1: 1738 sq. ft, FLOOR 2: 1573 sq. ft
EXCLUDED AREAS: GARAGE: 541 sq. ft, PATIO: 2615 sq. ft, SWIMMING POOL: 400 sq. ft,
OPEN TO BELOW: 117 sq. ft

Floor Plan Created By V1photos.com, Measurements Deamed Highly Reliable But Not Guaranteed.



Disclaimer: Sizes and Dimensions are Approximate, Actual May Vary.



Christine Viscovich P.A.
954-290-8042
christineflorida@bellsouth.net



Scan code
for more
property
details



228 Fairmont Way, Weston, FL 33326 – All Levels



TOTAL: 3311 sq. ft
FLOOR 1: 1738 sq. ft, FLOOR 2: 1573 sq. ft
EXCLUDED AREAS: GARAGE: 541 sq. ft, PATIO: 2615 sq. ft, SWIMMING POOL: 400 sq. ft,
OPEN TO BELOW: 117 sq. ft

Floor Plan Created By V1photos.com. Measurements Deamed Highly Reliable But Not Guaranteed.



Disclaimer: Sizes and Dimensions are Approximate, Actual May Vary.



Christine Viscovich P.A.
954-290-8042
christineflorida@bellsouth.net

