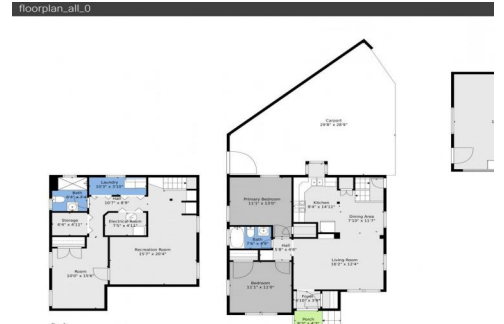




3490 Jay Street
 Wheat Ridge, CO 80033
 COMMUNITY: Coulehan

MLS # 5948850
 PRICE \$615,000



Single Family



1640 SQFT



3 Beds



2 Baths



2 Car



0.21 Acre

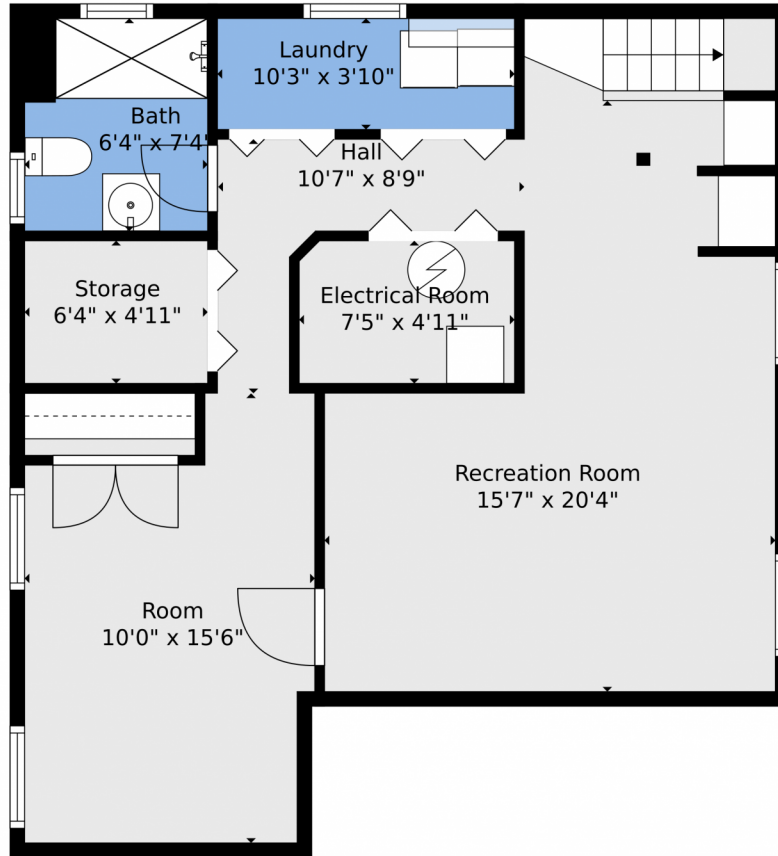


Annie Schneider
 303-548-5299
 annie@annieschneider.com



Scan code
 for more
 property
 details





TOTAL: 1355 sq. ft
BELOW GROUND: 584 sq. ft, FLOOR 2: 771 sq. ft
EXCLUDED AREAS: ELECTRICAL ROOM: 36 sq. ft, STORAGE: 31 sq. ft, GARAGE: 378 sq. ft,
PORCH: 35 sq. ft, CARPORT: 582 sq. ft

Floor Plan Created By V1photos.com. Measurements Deamed Highly Reliable But Not Guaranteed.



Disclaimer: Sizes and Dimensions are Approximate, Actual May Vary.



Annie Schneider
303-548-5299
annie@annieschneider.com



Scan code
for more
property
details



TOTAL: 1355 sq. ft
BELOW GROUND: 584 sq. ft, FLOOR 2: 771 sq. ft
EXCLUDED AREAS: ELECTRICAL ROOM: 36 sq. ft, STORAGE: 31 sq. ft, GARAGE: 378 sq. ft,
PORCH: 35 sq. ft, CARPORT: 582 sq. ft

Floor Plan Created By V1photos.com. Measurements Deamed Highly Reliable But Not Guaranteed.



Disclaimer: Sizes and Dimensions are Approximate, Actual May Vary.



Annie Schneider
303-548-5299
annie@annieschneider.com



Scan code
for more
property
details



TOTAL: 1355 sq. ft
BELOW GROUND: 584 sq. ft, FLOOR 2: 771 sq. ft
EXCLUDED AREAS: ELECTRICAL ROOM: 36 sq. ft, STORAGE: 31 sq. ft, GARAGE: 378 sq. ft,
PORCH: 35 sq. ft, CARPORT: 582 sq. ft

Floor Plan Created By V1photos.com, Measurements Deamed Highly Reliable But Not Guaranteed.



Disclaimer: Sizes and Dimensions are Approximate, Actual May Vary.



Annie Schneider
303-548-5299
annie@annieschneider.com

