



7672 Pineridge Terrace  
Castle Pines, CO 80108  
COMMUNITY: Pineridge

MLS # 2978450



 Single Family  4469 SQFT  3 Beds  3 Baths  2 Car  0.17 Acre

## PROPERTY DETAILS

Experience luxury at 7672 Pineridge Terrace, in the sought-after Pineridge community! This maintenance-free patio home offers stunning views of The Ridge golf course, mountains, and Pikes Peak. The living room, formal dining room, and family room with vaulted ceilings and hardwood floors provide a welcoming atmosphere. The chef's kitchen features Corian countertops and stainless steel appliances. The primary suite includes a 5-piece bath and walk-in closet. The fully finished walkout basement has two bedrooms, a bathroom, rec room, and basement kitchen. Outside, enjoy the spacious patio and deck with a gas fire pit. The community offers access to golf, recreation facilities, pools, tennis courts, playgrounds, and trails.



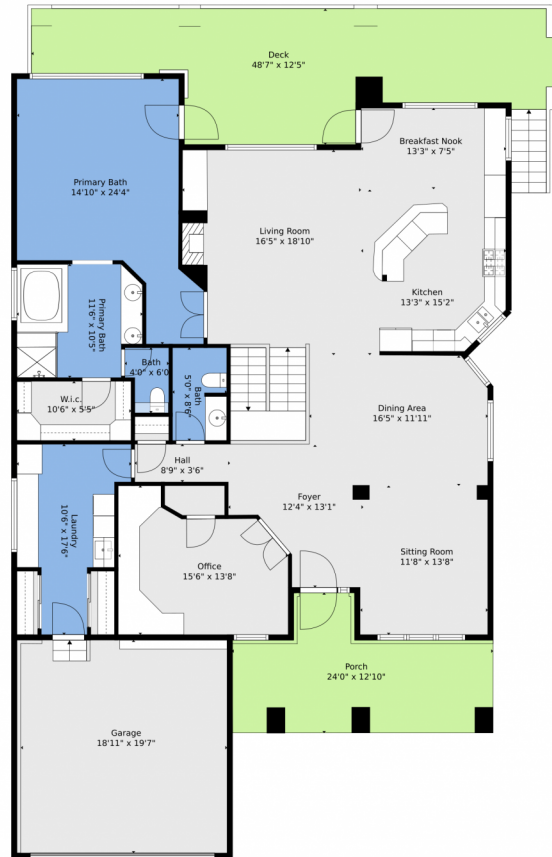
**Blair Bryant | Designated Broker**  
720-589-1740  
Blair@StellerRealEstate.com  
<https://www.StellerRealEstate.com>



Scan code  
for more  
property  
details



# 7672 Pineridge Terrace, Castle Pines, CO 80108 – Main Level



**TOTAL: 3847 sq. ft**  
BELOW GROUND: 1821 sq. ft, FLOOR 2: 2026 sq. ft  
EXCLUDED AREAS: ELECTRICAL ROOM: 104 sq. ft, COVERED PATIO: 320 sq. ft, GARAGE: 377 sq. ft,  
PORCH: 228 sq. ft, DECK: 462 sq. ft

Floor Plan Created By V1photos.com, Measurements Deamed Highly Reliable But Not Guaranteed.



Disclaimer: Sizes and Dimensions are Approximate, Actual May Vary.



**Blair Bryant | Designated Broker**

720-589-1740

[Blair@StellerRealEstate.com](mailto:Blair@StellerRealEstate.com)

<https://www.StellerRealEstate.com>



Scan code  
for more  
property  
details



# 7672 Pineridge Terrace, Castle Pines, CO 80108 – Lower Level



**TOTAL: 3847 sq. ft**  
BELOW GROUND: 1821 sq. ft, FLOOR 2: 2026 sq. ft  
EXCLUDED AREAS: ELECTRICAL ROOM: 104 sq. ft, COVERED PATIO: 320 sq. ft, GARAGE: 377 sq. ft,  
PORCH: 228 sq. ft, DECK: 462 sq. ft

Floor Plan Created By V1photos.com, Measurements Deamed Highly Reliable But Not Guaranteed.



Disclaimer: Sizes and Dimensions are Approximate, Actual May Vary.



**Blair Bryant | Designated Broker**

720-589-1740

Blair@StellerRealEstate.com

<https://www.StellerRealEstate.com>



Scan code  
for more  
property  
details



# 7672 Pineridge Terrace, Castle Pines, CO 80108 – All Levels



**TOTAL: 3847 sq. ft**  
BELOW GROUND: 1821 sq. ft, FLOOR 2: 2026 sq. ft  
EXCLUDED AREAS: ELECTRICAL ROOM: 104 sq. ft, COVERED PATIO: 320 sq. ft, GARAGE: 377 sq. ft,  
PORCH: 228 sq. ft, DECK: 462 sq. ft

Floor Plan Created By V1photos.com, Measurements Deamed Highly Reliable But Not Guaranteed.

Disclaimer: Sizes and Dimensions are Approximate, Actual May Vary.



**Blair Bryant | Designated Broker**

720-589-1740

Blair@StellerRealEstate.com

<https://www.StellerRealEstate.com>



Scan code  
for more  
property  
details

