




 Single Family

 2939 SQFT

 4 Beds

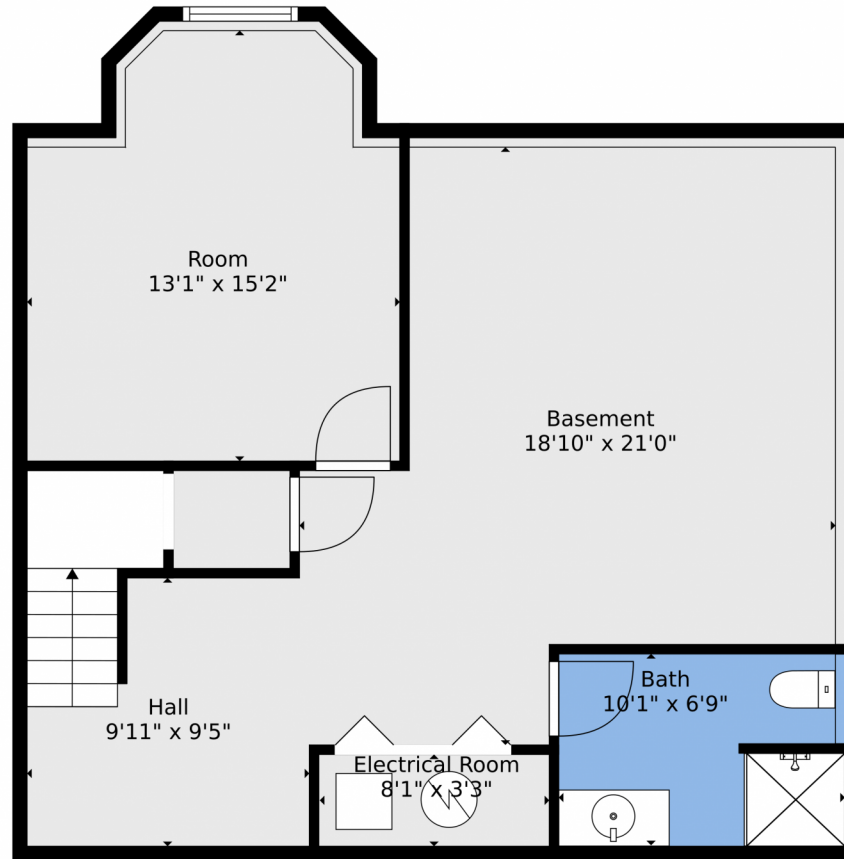
 3 Baths



Taylor Haas
 303-665-7368
 taylorh@coloradorpm.com
<https://www.coloradorpm.com/available-rental-properties-denver>



110 Mobray Court, Colorado Springs, CO 80906 – Lower Level



TOTAL: 2762 sq. ft
Below Ground: 725 sq. ft, FLOOR 2: 1130 sq. ft, FLOOR 3: 907 sq. ft
EXCLUDED AREAS: ELECTRICAL ROOM: 26 sq. ft, GARAGE: 405 sq. ft, DECK: 235 sq. ft,
PORCH: 162 sq. ft, FIREPLACE: 10 sq. ft, OPEN TO BELOW: 277 sq. ft,
BAY WINDOW: 12 sq. ft

Floor Plan Created By V1photos.com, Measurements Deamed Highly Reliable But Not Guaranteed.



Disclaimer: Sizes and Dimensions are Approximate, Actual May Vary.



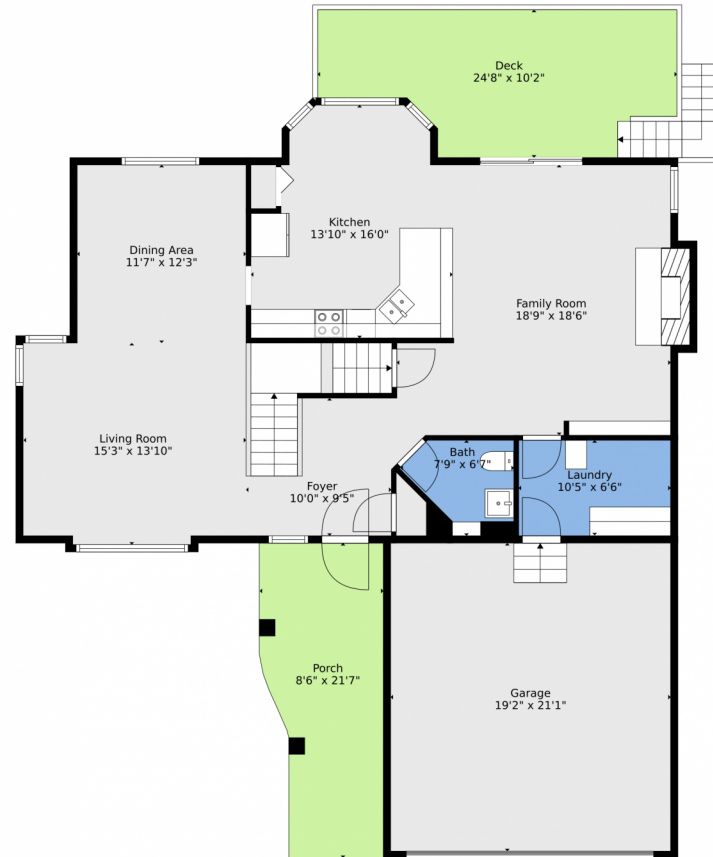
Taylor Haas
303-665-7368
taylorh@coloradorpm.com
<https://www.coloradorpm.com/available-rental-properties-denver>



Scan code
for more
property
details



110 Mobray Court, Colorado Springs, CO 80906 – Main Level



TOTAL: 2762 sq. ft
Below Ground: 725 sq. ft, FLOOR 2: 1130 sq. ft, FLOOR 3: 907 sq. ft
EXCLUDED AREAS: ELECTRICAL ROOM: 26 sq. ft, GARAGE: 405 sq. ft, DECK: 235 sq. ft,
PORCH: 162 sq. ft, FIREPLACE: 10 sq. ft, OPEN TO BELOW: 277 sq. ft,
BAY WINDOW: 12 sq. ft

Floor Plan Created By V1photos.com, Measurements Deamed Highly Reliable But Not Guaranteed.



Disclaimer: Sizes and Dimensions are Approximate, Actual May Vary.



Taylor Haas
303-665-7368
taylorh@coloradorpm.com
<https://www.coloradorpm.com/available-rental-properties-denver>



Scan code
for more
property
details



110 Mobray Court, Colorado Springs, CO 80906 — upper level



TOTAL: 2762 sq. ft
Below Ground: 725 sq. ft, FLOOR 2: 1130 sq. ft, FLOOR 3: 907 sq. ft
EXCLUDED AREAS: ELECTRICAL ROOM: 26 sq. ft, GARAGE: 405 sq. ft, DECK: 235 sq. ft,
PORCH: 162 sq. ft, FIREPLACE: 10 sq. ft, OPEN TO BELOW: 277 sq. ft,
BAY WINDOW: 12 sq. ft

Floor Plan Created By V1photos.com. Measurements Deamed Highly Reliable But Not Guaranteed.



Disclaimer: Sizes and Dimensions are Approximate, Actual May Vary.



Taylor Haas
303-665-7368
taylorh@coloradorpm.com
<https://www.coloradorpm.com/available-rental-properties-denver>



110 Mobray Court, Colorado Springs, CO 80906 – All Levels



TOTAL: 2762 sq. ft

Below Ground: 725 sq. ft, FLOOR 2: 1130 sq. ft, FLOOR 3: 907 sq. ft
EXCLUDED AREAS: ELECTRICAL ROOM: 26 sq. ft, GARAGE: 405 sq. ft, DECK: 235 sq. ft,
PORCH: 162 sq. ft, FIREPLACE: 10 sq. ft, OPEN TO BELOW: 277 sq. ft,
BAY WINDOW: 12 sq. ft

Floor Plan Created By V1photos.com, Measurements Deamed Highly Reliable But Not Guaranteed.



Disclaimer: Sizes and Dimensions are Approximate, Actual May Vary.



Taylor Haas
303-665-7368
taylorh@coloradorpm.com
<https://www.coloradorpm.com/available-rental-properties-denver>



Scan code
for more
property
details

