



 Single Family

 3172 SQFT

 3 Beds

 2/1 Baths



**Taylor Haas**  
303-665-7368  
taylorh@coloradorpm.com  
<https://www.coloradorpm.com/available-rental-properties-denver>



# 19170 Lochmere Court, Monument, CO 80132 – Lower Level



**TOTAL: 2881 sq. ft**  
Below Ground: 0 sq. ft, FLOOR 2: 1622 sq. ft, FLOOR 3: 1259 sq. ft  
EXCLUDED AREAS: ROOM: 76 sq. ft, ELECTRICAL ROOM: 449 sq. ft, PATIO: 151 sq. ft.  
COVERED PATIO: 223 sq. ft, BASEMENT: 1188 sq. ft, GARAGE: 822 sq. ft,  
PORCH: 95 sq. ft, BALCONY: 239 sq. ft, FIREPLACE: 26 sq. ft,  
OPEN TO BELOW: 377 sq. ft

Floor Plan Created By V1photos.com. Measurements Deamed Highly Reliable But Not Guaranteed.



Disclaimer: Sizes and Dimensions are Approximate, Actual May Vary.



**Taylor Haas**  
303-665-7368  
taylorh@coloradorpm.com  
<https://www.coloradorpm.com/available-rental-properties-denver>



# 19170 Lochmere Court, Monument, CO 80132 – Main Level



**TOTAL: 2881 sq. ft**  
Below Ground: 0 sq. ft, FLOOR 2: 1622 sq. ft, FLOOR 3: 1259 sq. ft  
EXCLUDED AREAS: ROOM: 76 sq. ft, ELECTRICAL ROOM: 449 sq. ft, PATIO: 151 sq. ft.  
COVERED PATIO: 223 sq. ft, BASEMENT: 1188 sq. ft, GARAGE: 822 sq. ft.  
PORCH: 95 sq. ft, BALCONY: 239 sq. ft, FIREPLACE: 26 sq. ft.  
OPEN TO BELOW: 377 sq. ft

Floor Plan Created By V1photos.com, Measurements Deamed Highly Reliable But Not Guaranteed.



Disclaimer: Sizes and Dimensions are Approximate, Actual May Vary.



**Taylor Haas**

303-665-7368

taylorh@coloradorpm.com

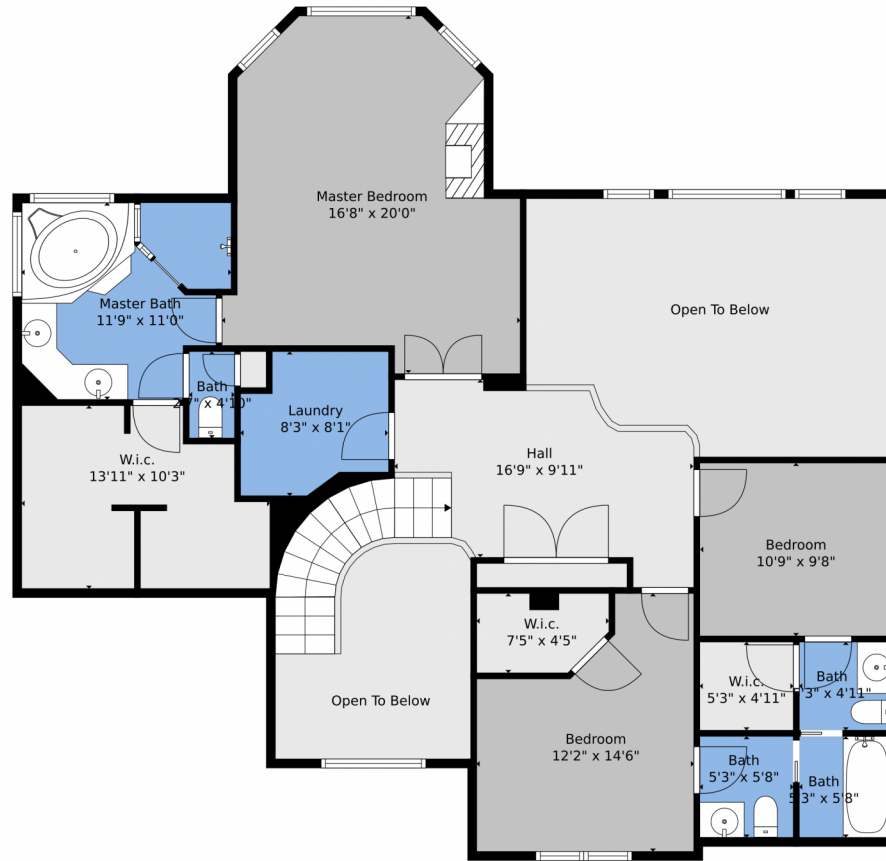
<https://www.coloradorpm.com/available-rental-properties-denver>



Scan code  
for more  
property  
details



# 19170 Lochmere Court, Monument, CO 80132 – upper level



**TOTAL: 2881 sq. ft**  
Below Ground: 0 sq. ft, FLOOR 2: 1622 sq. ft, FLOOR 3: 1259 sq. ft  
EXCLUDED AREAS: ROOM: 76 sq. ft, ELECTRICAL ROOM: 449 sq. ft, PATIO: 151 sq. ft.  
COVERED PATIO: 223 sq. ft, BASEMENT: 1188 sq. ft, GARAGE: 822 sq. ft.  
PORCH: 95 sq. ft, BALCONY: 239 sq. ft, FIREPLACE: 26 sq. ft.  
OPEN TO BELOW: 377 sq. ft

Floor Plan Created By V1photos.com, Measurements Deamed Highly Reliable But Not Guaranteed.



Disclaimer: Sizes and Dimensions are Approximate, Actual May Vary.



**Taylor Haas**  
303-665-7368  
taylorh@coloradorpm.com  
<https://www.coloradorpm.com/available-rental-properties-denver>



# 19170 Lochmere Court, Monument, CO 80132 – All Levels



**TOTAL: 2881 sq. ft**  
 Below Ground: 0 sq. ft, FLOOR 2: 1622 sq. ft, FLOOR 3: 1259 sq. ft  
 EXCLUDED AREAS: ROOM: 76 sq. ft, ELECTRICAL ROOM: 449 sq. ft, PATIO: 151 sq. ft.  
 COVERED PATIO: 223 sq. ft, BASEMENT: 1188 sq. ft, GARAGE: 822 sq. ft,  
 PORCH: 95 sq. ft, BALCONY: 239 sq. ft, FIREPLACE: 26 sq. ft,  
 OPEN TO BELOW: 377 sq. ft

Floor Plan Created By V1photos.com, Measurements Deamed Highly Reliable But Not Guaranteed.



Disclaimer: Sizes and Dimensions are Approximate, Actual May Vary.



**Taylor Haas**  
 303-665-7368  
 taylorh@coloradorpm.com  
<https://www.coloradorpm.com/available-rental-properties-denver>



Scan code  
 for more  
 property  
 details

