

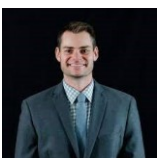




 Single Family

 6200 SQFT

 0.88 Acre



**David Geppert**  
720-339-0548  
david.geppert@kw.com



# 5865 Zinnia Court, Arvada, CO 80004 – main level



**TOTAL: 5797 sq. ft**  
BELOW GROUND: 1820 sq. ft, FLOOR 2: 2181 sq. ft, FLOOR 3: 1796 sq. ft  
EXCLUDED AREAS: ELECTRICAL ROOM: 134 sq. ft, STORAGE: 40 sq. ft, GARAGE: 756 sq. ft,  
OPEN TO BELOW: 117 sq. ft

Floor Plan Created By V1photos.com, Measurements Deamed Highly Reliable But Not Guaranteed.



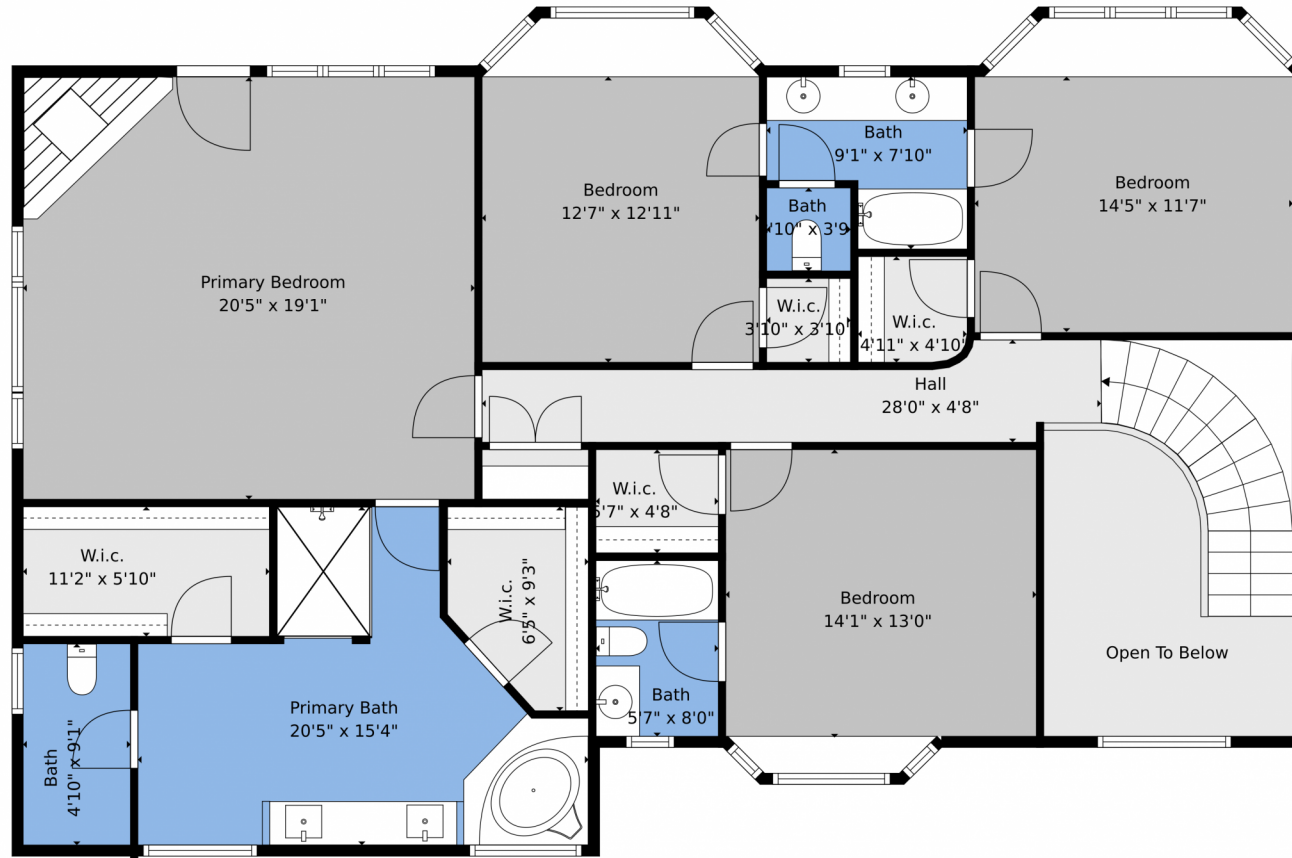
Disclaimer: Sizes and Dimensions are Approximate, Actual May Vary.



**David Geppert**  
720-339-0548  
david.geppert@kw.com



5865 Zinnia Court, Arvada, CO 80004 – upper level

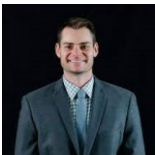


**TOTAL: 5797 sq. ft**  
BELOW GROUND: 1820 sq. ft, FLOOR 2: 2181 sq. ft, FLOOR 3: 1796 sq. ft  
EXCLUDED AREAS: ELECTRICAL ROOM: 134 sq. ft, STORAGE: 40 sq. ft, GARAGE: 756 sq. ft,  
OPEN TO BELOW: 117 sq. ft

Floor Plan Created By V1photos.com, Measurements Deamed Highly Reliable But Not Guaranteed.



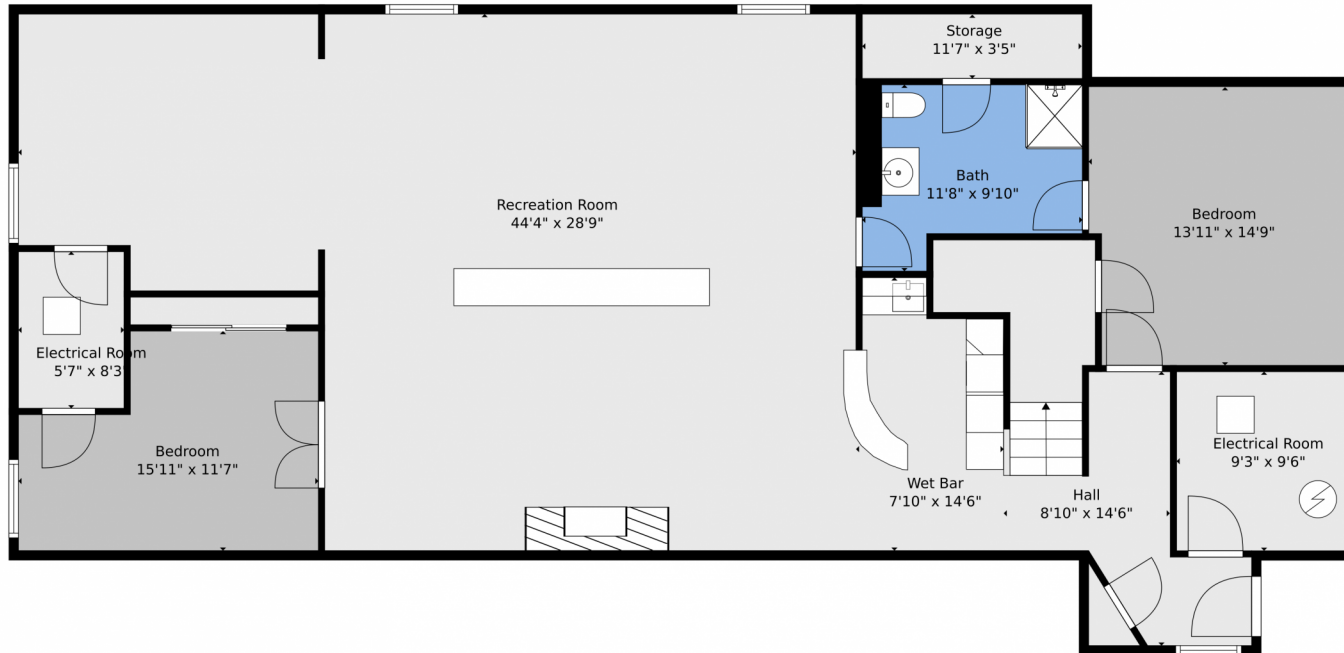
Disclaimer: Sizes and Dimensions are Approximate, Actual May Vary.



**David Geppert**  
720-339-0548  
david.geppert@kw.com



Scan code  
for more  
property  
details



**TOTAL: 5797 sq. ft**  
BELOW GROUND: 1820 sq. ft, FLOOR 2: 2181 sq. ft, FLOOR 3: 1796 sq. ft  
EXCLUDED AREAS: ELECTRICAL ROOM: 134 sq. ft, STORAGE: 40 sq. ft, GARAGE: 756 sq. ft,  
OPEN TO BELOW: 117 sq. ft

Floor Plan Created By V1photos.com, Measurements Deamed Highly Reliable But Not Guaranteed.

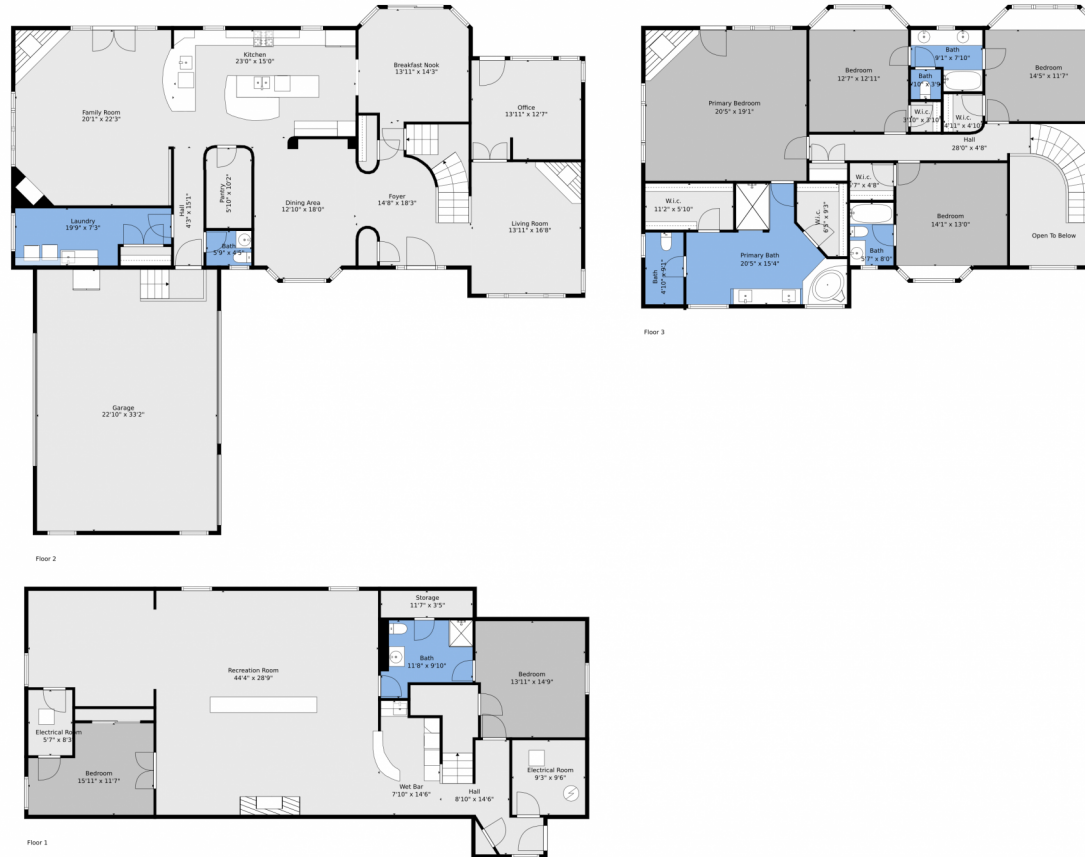
Disclaimer: Sizes and Dimensions are Approximate, Actual May Vary.



**David Geppert**  
720-339-0548  
david.geppert@kw.com



# 5865 Zinnia Court, Arvada, CO 80004 – all levels

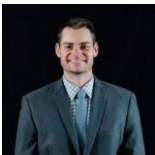


**TOTAL: 5797 sq. ft**  
 BELOW GROUND: 1820 sq. ft, FLOOR 2: 2181 sq. ft, FLOOR 3: 1796 sq. ft  
 EXCLUDED AREAS: ELECTRICAL ROOM: 134 sq. ft, STORAGE: 40 sq. ft, GARAGE: 756 sq. ft,  
 OPEN TO BELOW: 117 sq. ft

Floor Plan Created By V1photos.com, Measurements Deamed Highly Reliable But Not Guaranteed.



Disclaimer: Sizes and Dimensions are Approximate, Actual May Vary.



**David Geppert**  
 720-339-0548  
 david.geppert@kw.com

