




 Single Family

 3006 SQFT

 5 Beds

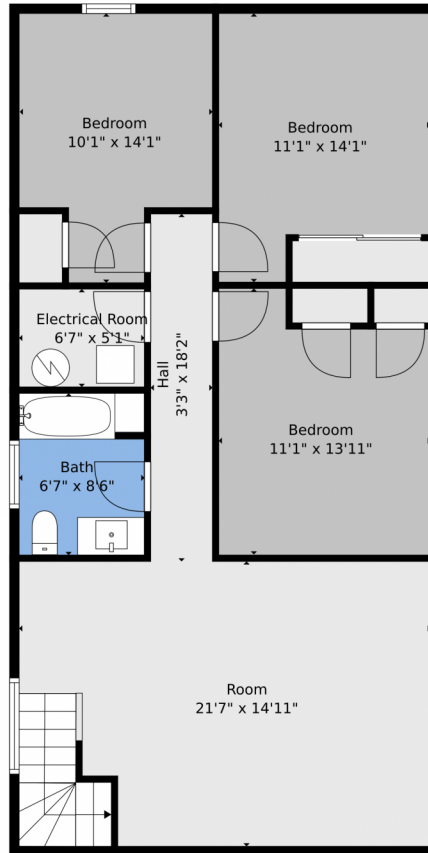
 5 Baths



Taylor Haas
303-665-7368
taylorh@coloradorpm.com
<https://www.coloradorpm.com/available-rental-properties-denv>



930 South Gaylord Street, Denver, CO 80209 – Lower Level



TOTAL: 2804 sq. ft
BELOW GROUND: 908 sq. ft, FLOOR 2: 1041 sq. ft, FLOOR 3: 855 sq. ft
EXCLUDED AREAS: ELECTRICAL ROOM: 34 sq. ft, PORCH: 183 sq. ft, DECK: 114 sq. ft,
FIREPLACE: 11 sq. ft, BALCONY: 67 sq. ft

Floor Plan Created By V1photos.com. Measurements Deamed Highly Reliable But Not Guaranteed.



Disclaimer: Sizes and Dimensions are Approximate, Actual May Vary.



Taylor Haas
303-665-7368
taylorh@coloradorpm.com
<https://www.coloradorpm.com/available-rental-properties-denv>



Scan code
for more
property
details

930 South Gaylord Street, Denver, CO 80209 – Main Level



TOTAL: 2804 sq. ft
BELOW GROUND: 908 sq. ft, FLOOR 2: 1041 sq. ft, FLOOR 3: 855 sq. ft
EXCLUDED AREAS: ELECTRICAL ROOM: 34 sq. ft, PORCH: 183 sq. ft, DECK: 114 sq. ft,
FIREPLACE: 11 sq. ft, BALCONY: 67 sq. ft

Floor Plan Created By V1photos.com, Measurements Deamed Highly Reliable But Not Guaranteed.



Disclaimer: Sizes and Dimensions are Approximate, Actual May Vary.



Taylor Haas

303-665-7368

taylorh@coloradorpm.com

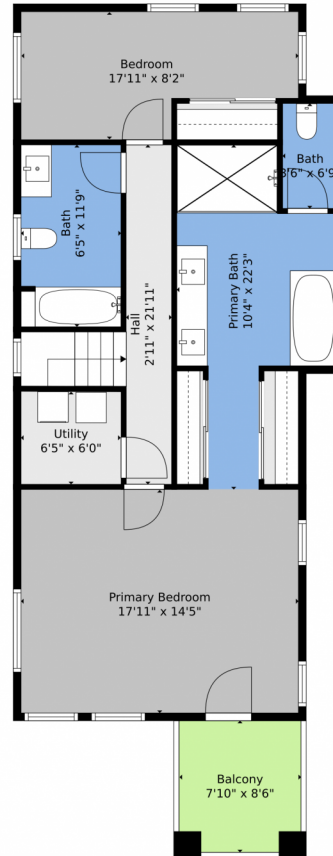
<https://www.coloradorpm.com/available-rental-properties-denver>



Scan code
for more
property
details



930 South Gaylord Street, Denver, CO 80209 – Upper Levels



TOTAL: 2804 sq. ft
BELOW GROUND: 908 sq. ft, FLOOR 2: 1041 sq. ft, FLOOR 3: 855 sq. ft
EXCLUDED AREAS: ELECTRICAL ROOM: 34 sq. ft, PORCH: 183 sq. ft, DECK: 114 sq. ft,
FIREPLACE: 11 sq. ft, BALCONY: 67 sq. ft

Floor Plan Created By V1photos.com, Measurements Deamed Highly Reliable But Not Guaranteed.



Disclaimer: Sizes and Dimensions are Approximate, Actual May Vary.



Taylor Haas

303-665-7368

taylorh@coloradorpm.com

<https://www.coloradorpm.com/available-rental-properties-denver>



Scan code
for more
property
details



930 South Gaylord Street, Denver, CO 80209 – All Levels



TOTAL: 2804 sq. ft
BELOW GROUND: 908 sq. ft, FLOOR 2: 1041 sq. ft, FLOOR 3: 855 sq. ft
EXCLUDED AREAS: ELECTRICAL ROOM: 34 sq. ft, PORCH: 183 sq. ft, DECK: 114 sq. ft,
FIREPLACE: 11 sq. ft, BALCONY: 67 sq. ft

Floor Plan Created By V1photos.com. Measurements Deamed Highly Reliable But Not Guaranteed.



Disclaimer: Sizes and Dimensions are Approximate, Actual May Vary.



Taylor Haas

303-665-7368

taylorh@coloradorpm.com

<https://www.coloradorpm.com/available-rental-properties-denv>



Scan code
for more
property
details

