



floorplan_all_0



Single Family



1600 SQFT



2 Beds



1 Baths



2 Car



0.2 Acre



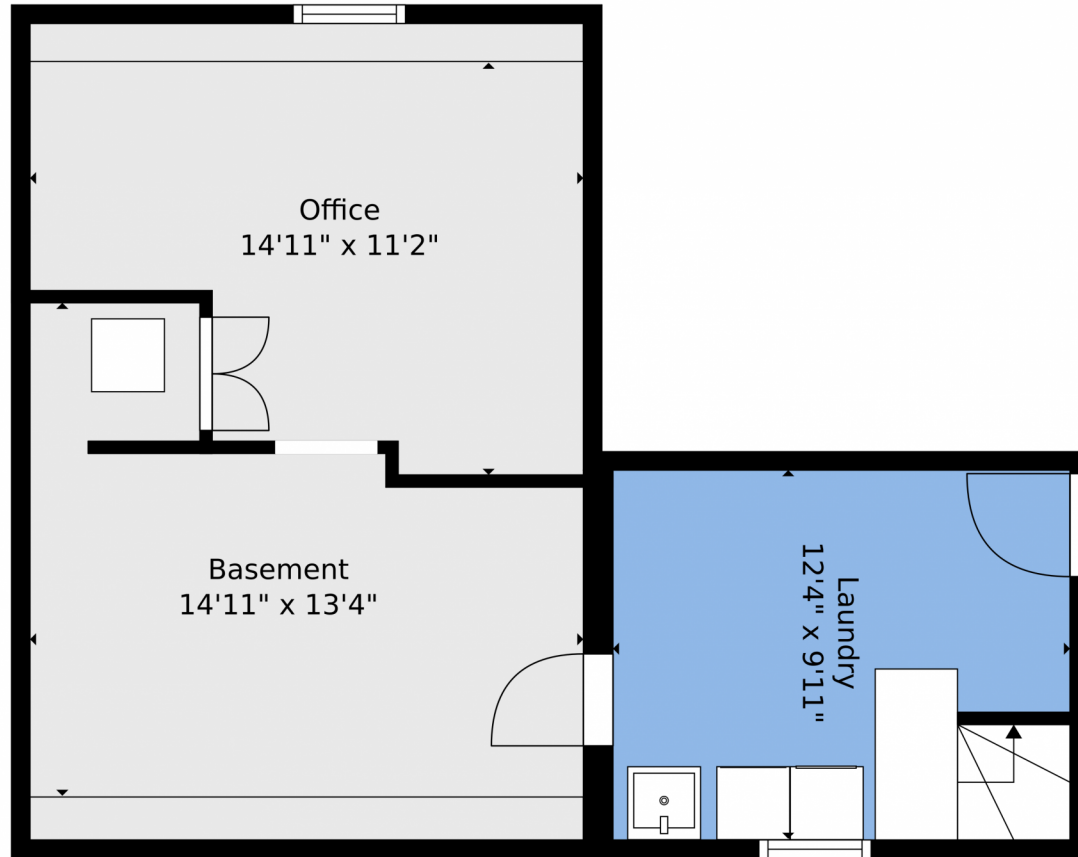
Alexis Foster
970-310-6999
alexisfoster@windermere.com



Scan code
for more
property
details



823 Collyer Street, Longmont, CO 80501 – Lower Level



TOTAL: 1053 sq. ft
BELOW GROUND: 185 sq. ft, FLOOR 2: 868 sq. ft
EXCLUDED AREAS: OFFICE: 153 sq. ft, LAUNDRY: 123 sq. ft, SCREENED PORCH: 98 sq. ft,
PATIO: 2020 sq. ft, GARAGE: 437 sq. ft, STORAGE: 437 sq. ft

Floor Plan Created By V1photos.com. Measurements Deamed Highly Reliable But Not Guaranteed.



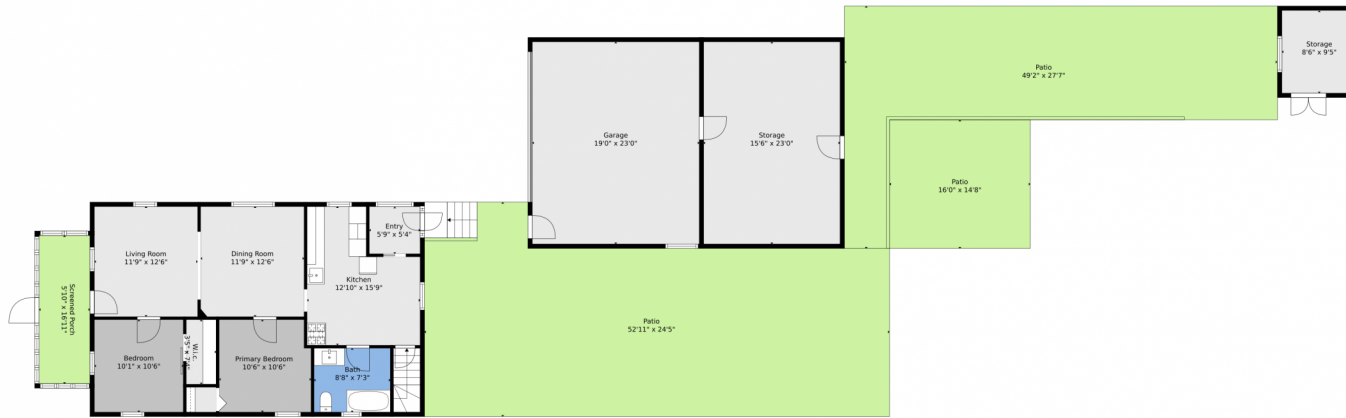
Disclaimer: Sizes and Dimensions are Approximate, Actual May Vary.



Alexis Foster
970-310-6999
alexisfoster@windermere.com



823 Collyer Street, Longmont, CO 80501 – Main Level



TOTAL: 1053 sq. ft
BELOW GROUND: 185 sq. ft, FLOOR 2: 868 sq. ft
EXCLUDED AREAS: OFFICE: 153 sq. ft, LAUNDRY: 123 sq. ft, SCREENED PORCH: 98 sq. ft,
PATIO: 2020 sq. ft, GARAGE: 437 sq. ft, STORAGE: 437 sq. ft

Floor Plan Created By V1photos.com, Measurements Deemed Highly Reliable But Not Guaranteed.



Disclaimer: Sizes and Dimensions are Approximate, Actual May Vary.

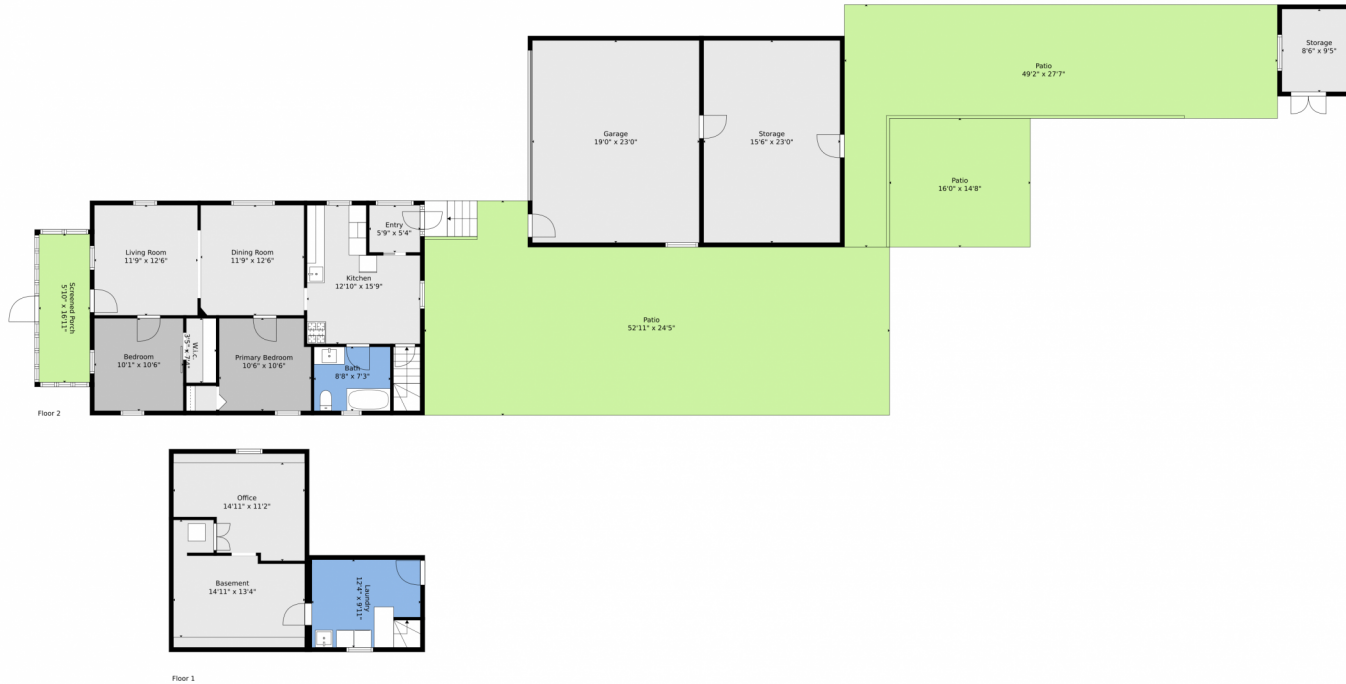


Alexis Foster
970-310-6999
alexisfoster@windermere.com



Scan code
for more
property
details

823 Collyer Street, Longmont, CO 80501 – All Levels



TOTAL: 1053 sq. ft
BELOW GROUND: 185 sq. ft, FLOOR 2: 868 sq. ft
EXCLUDED AREAS: OFFICE: 153 sq. ft, LAUNDRY: 123 sq. ft, SCREENED PORCH: 98 sq. ft,
PATIO: 2020 sq. ft, GARAGE: 437 sq. ft, STORAGE: 437 sq. ft

Floor Plan Created By V1photos.com, Measurements Deamed Highly Reliable But Not Guaranteed.



Disclaimer: Sizes and Dimensions are Approximate, Actual May Vary.



Alexis Foster
970-310-6999
alexisfoster@windermere.com



Scan code
for more
property
details