



29832 Dorothy Road
Evergreen, CO 80439
COMMUNITY: Evergreen Park Estates

MLS # 8421366
PRICE \$925,000



Single Family



2600 SQFT



4 Beds



3 Baths



2 Car



1.53 Acre

PROPERTY DETAILS

I've lived in my home for over 20 years and I'm still discovering what I love about it. It was a great place to raise my son, with plenty of yard space for him to grow and play. We enjoyed sledding in the winter and bike riding in the yard. As he got older, he used the back yard to practice lacrosse and would ride his bike with friends to the nearby trails and lake. He even carved wood and stored his kayak in the barn. We also created a perfect camping spot in the back yard, complete with a water feature and fireplace. I love the peacefulness of the forest after a rain and the beauty of the wildlife that surrounds us. Watching a herd of elk pass through our front yard is truly remarkable. I also enjoy feeding the birds and experiencing the quiet and starry nights. My house is more than just a shelter, it's a place filled with love and wonderful memories.



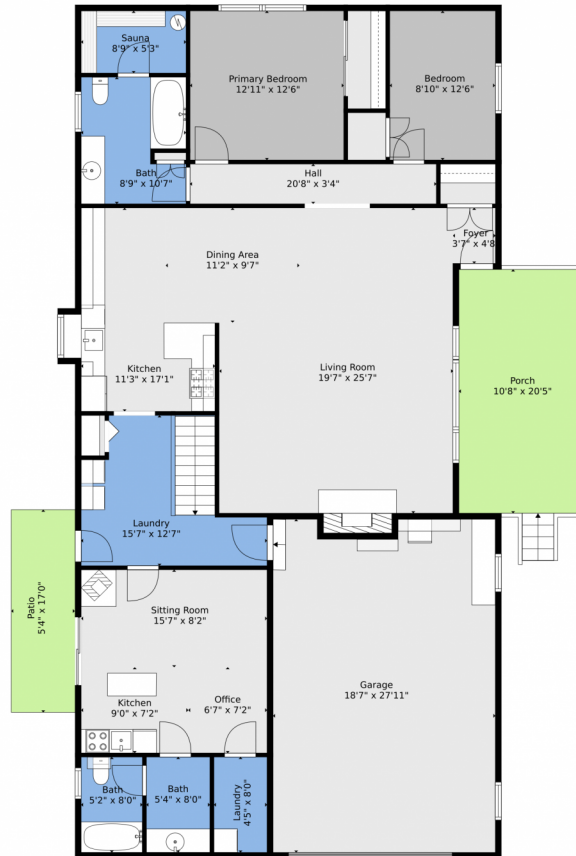
MARK ZumTobel
303-909-8808
MarkZumTobel@msn.com



Scan code
for more
property
details



29832 Dorothy Road, Evergreen, CO 80439 — Main Level



TOTAL: 2522 sq. ft
BELOW GROUND: 688 sq. ft, FLOOR 2: 1834 sq. ft
EXCLUDED AREAS: COVERED PATIO: 180 sq. ft, UTILITY: 59 sq. ft, PORCH: 229 sq. ft,
PATIO: 91 sq. ft, GARAGE: 509 sq. ft, BAY WINDOW: 7 sq. ft,
FIREPLACE: 11 sq. ft

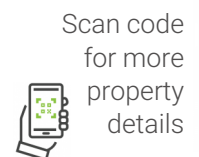
Floor Plan Created By V1photos.com, Measurements Deamed Highly Reliable But Not Guaranteed.



Disclaimer: Sizes and Dimensions are Approximate, Actual May Vary.



MARK ZumTobel
303-909-8808
MarkZumTobel@msn.com



Scan code
for more
property
details



29832 Dorothy Road, Evergreen, CO 80439 — Lower Level



TOTAL: 2522 sq. ft
BELOW GROUND: 688 sq. ft, FLOOR 2: 1834 sq. ft
EXCLUDED AREAS: COVERED PATIO: 180 sq. ft, UTILITY: 59 sq. ft, PORCH: 229 sq. ft,
PATIO: 91 sq. ft, GARAGE: 509 sq. ft, BAY WINDOW: 7 sq. ft,
FIREPLACE: 11 sq. ft

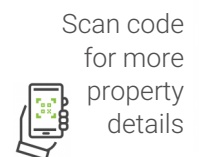
Floor Plan Created By V1photos.com, Measurements Deamed Highly Reliable But Not Guaranteed.



Disclaimer: Sizes and Dimensions are Approximate, Actual May Vary.



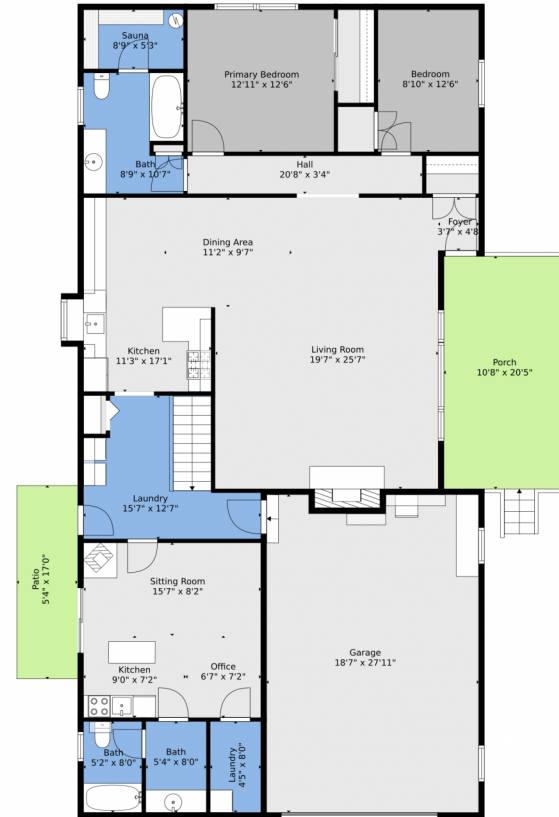
MARK ZumTobel
303-909-8808
MarkZumTobel@msn.com



29832 Dorothy Road, Evergreen, CO 80439 — All Levels



Floor 1



Floor 2



TOTAL: 2522 sq. ft
BELOW GROUND: 688 sq. ft, FLOOR 2: 1834 sq. ft
EXCLUDED AREAS: COVERED PATIO: 180 sq. ft, UTILITY: 59 sq. ft, PORCH: 229 sq. ft,
PATIO: 91 sq. ft, GARAGE: 509 sq. ft, BAY WINDOW: 7 sq. ft,
FIREPLACE: 11 sq. ft

Floor Plan Created By V1photos.com, Measurements Deamed Highly Reliable But Not Guaranteed.



Disclaimer: Sizes and Dimensions are Approximate, Actual May Vary.



MARK ZumTobel
303-909-8808
MarkZumTobel@msn.com

