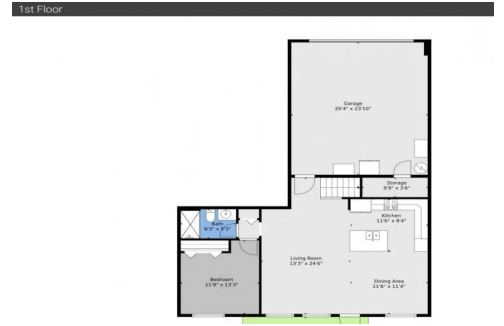




8152 Cascada Isle Way
 Cooper City, FL 33024
 COMMUNITY: Monterra



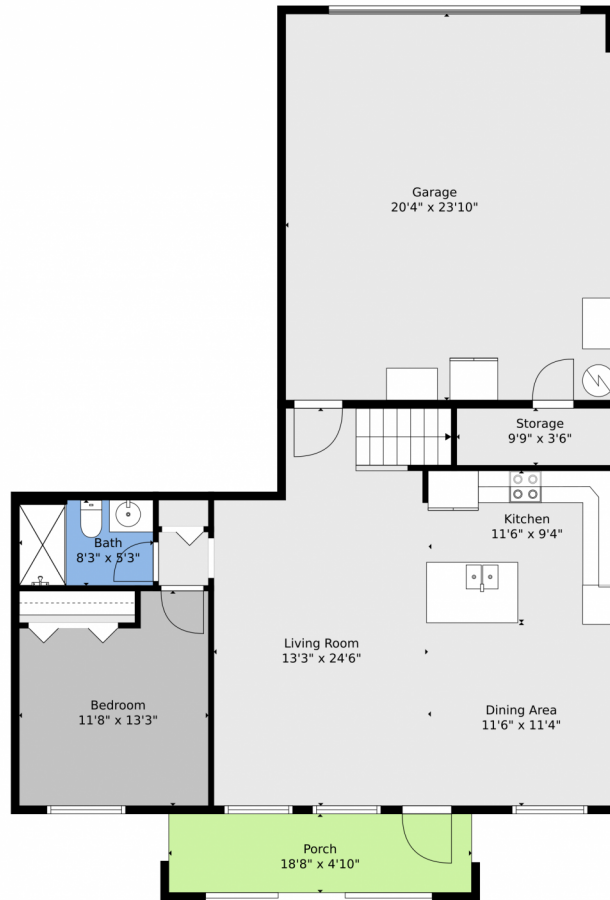
Single Family
 1770 SQFT
 3 Beds
 3 Baths
 1 Car
 0.14 Acre



Jason M Coley
 772-201-5229
jason@teamcoley.com
<https://teamcoley.asrefl.com/>



8152 Cascada Isle Way, Cooper City, FL 33024 – 1st Floor



Floor Plan Created By V1photos.com, Measurements Deamed Highly Reliable, But Not Guaranteed.



Disclaimer: Sizes and Dimensions are Approximate, Actual May Vary.

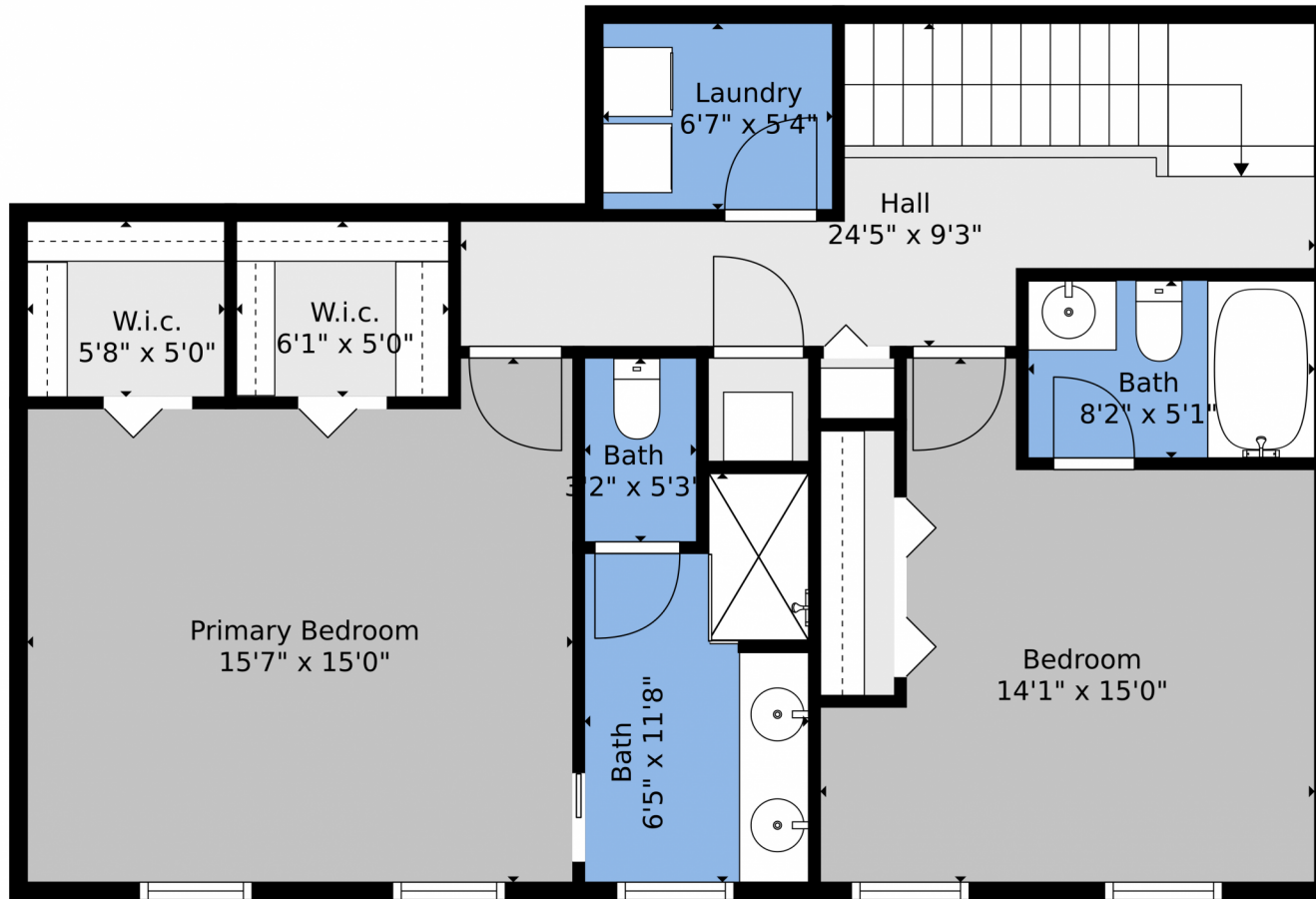


Jason M Coley
772-201-5229
jason@teamcoley.com
<https://teamcoley.asrefl.com/>



Scan code
for more
property
details





Floor Plan Created By V1photos.com, Measurements Deamed Highly Reliable, But Not Guaranteed.



Disclaimer: Sizes and Dimensions are Approximate, Actual May Vary.



Jason M Coley
772-201-5229
jason@teamcoley.com
<https://teamcoley.asrefl.com/>



Scan code
for more
property
details





Floor Plan Created By V1photos.com, Measurements Deamed Highly Reliable, But Not Guaranteed.



Disclaimer: Sizes and Dimensions are Approximate, Actual May Vary.



Jason M Coley
772-201-5229
jason@teamcoley.com
<https://teamcoley.asrefl.com/>



Scan code
for more
property
details

