



6974 Blue Mesa Lane
Littleton, CO 80125

MLS # 6641488
PRICE \$825,000



Single Family



3896 SQFT



5 Beds



4 Baths



3 Car



0.27 Acre

PROPERTY DETAILS

Welcome to your dream home in Roxborough Village! This exquisite 5-bedroom, 4-bathroom two-story home is perfectly situated on a peaceful cul-de-sac. Inside, you'll find a formal living room, dining room, and an open-concept kitchen and great room. The kitchen features modern appliances and a large island. The main floor also includes a bedroom, bath, and laundry room. Outside, enjoy the large deck with stunning views. Upstairs, the primary suite has a luxurious bath and walk-in closet. The finished walk-out basement offers additional living space. The front porch provides a serene spot to enjoy the views. This home is close to schools, parks, and outdoor activities. Don't miss out on this exceptional home in Roxborough!



Brent Rothwell

720-988-0183

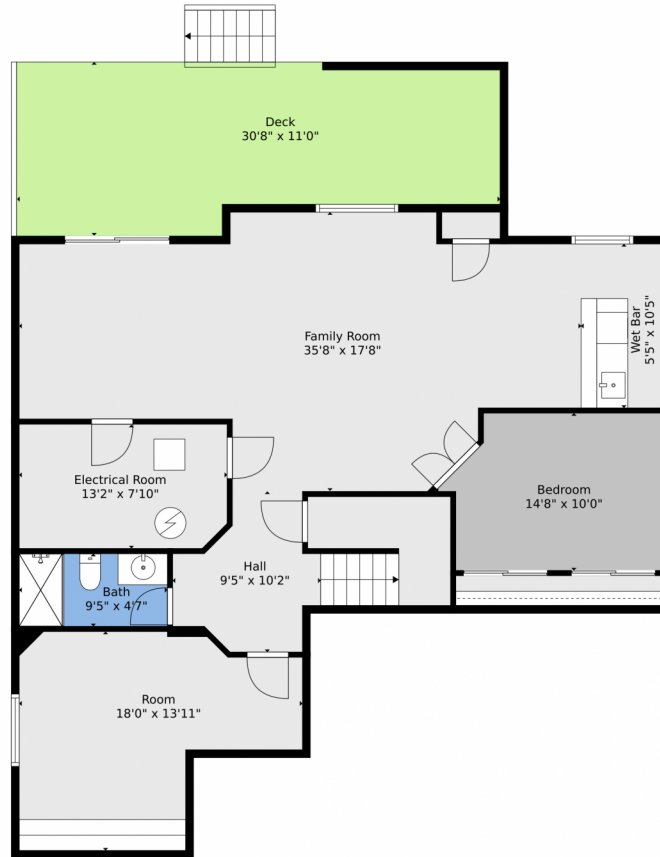
brent@soldbyrothwell.com

<https://www.SoldByRothwell.com>



Scan code
for more
property
details





TOTAL: 3654 sq. ft
BELOW GROUND: 1107 sq. ft, FLOOR 2: 1295 sq. ft, FLOOR 3: 1252 sq. ft
EXCLUDED AREAS: ELECTRICAL ROOM: 103 sq. ft, DECK: 603 sq. ft, GARAGE: 516 sq. ft,
PORCH: 119 sq. ft, OPEN TO BELOW: 306 sq. ft, BAY WINDOW: 18 sq. ft

Floor Plan Created By V1photos.com, Measurements Deamed Highly Reliable But Not Guaranteed.



Disclaimer: Sizes and Dimensions are Approximate, Actual May Vary.



Brent Rothwell
720-988-0183
brent@soldbyrothwell.com
<https://www.SoldByRothwell.com>



Scan code
for more
property
details



TOTAL: 3654 sq. ft
BELOW GROUND: 1107 sq. ft, FLOOR 2: 1295 sq. ft, FLOOR 3: 1252 sq. ft
EXCLUDED AREAS: ELECTRICAL ROOM: 103 sq. ft, DECK: 603 sq. ft, GARAGE: 516 sq. ft,
PORCH: 119 sq. ft, OPEN TO BELOW: 306 sq. ft, BAY WINDOW: 18 sq. ft

Floor Plan Created By V1photos.com, Measurements Deamed Highly Reliable But Not Guaranteed.



Disclaimer: Sizes and Dimensions are Approximate, Actual May Vary.



Brent Rothwell
720-988-0183
brent@soldbyrothwell.com
<https://www.SoldByRothwell.com>



Scan code
for more
property
details



TOTAL: 3654 sq. ft
BELOW GROUND: 1107 sq. ft, FLOOR 2: 1295 sq. ft, FLOOR 3: 1252 sq. ft
EXCLUDED AREAS: ELECTRICAL ROOM: 103 sq. ft, DECK: 603 sq. ft, GARAGE: 516 sq. ft,
PORCH: 119 sq. ft, OPEN TO BELOW: 306 sq. ft, BAY WINDOW: 18 sq. ft

Floor Plan Created By V1photos.com, Measurements Deamed Highly Reliable But Not Guaranteed.



Disclaimer: Sizes and Dimensions are Approximate, Actual May Vary.



Brent Rothwell
720-988-0183
brent@soldbyrothwell.com
<https://www.SoldByRothwell.com>



Scan code
for more
property
details





TOTAL: 3654 sq. ft
 BELOW GROUND: 1107 sq. ft, FLOOR 2: 1295 sq. ft, FLOOR 3: 1252 sq. ft
 EXCLUDED AREAS: ELECTRICAL ROOM: 103 sq. ft, DECK: 603 sq. ft, GARAGE: 516 sq. ft,
 PORCH: 119 sq. ft, OPEN TO BELOW: 306 sq. ft, BAY WINDOW: 18 sq. ft

Floor Plan Created By V1photos.com, Measurements Deamed Highly Reliable But Not Guaranteed.



Disclaimer: Sizes and Dimensions are Approximate, Actual May Vary.



Brent Rothwell
 720-988-0183
 brent@soldbyrothwell.com
<https://www.SoldByRothwell.com>

