



32555 Meadowridge Lane
 Pine, CO 80470
 COMMUNITY: Douglass Ranch

PRICE \$1,295,000

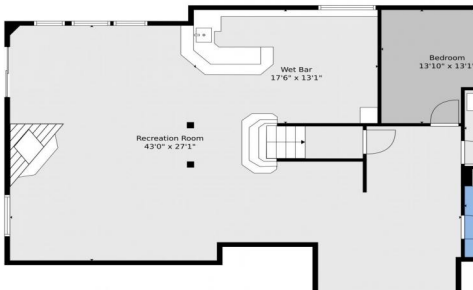
NICE PRICE IMPROVEMENT- NOW OFFERING AT \$1,375,000



lower level

main level

upper level



Single Family



4534 SQFT



4 Beds



4 Baths



3 Car



5 Acre

PROPERTY DETAILS

Co-Op Compensation is 2.5% of the final close price. This stunning mountain home on 5+ acres in Douglass Ranch boasts breathtaking views of Staunton State Park. The community features custom homes, paved roads, and FireWise designation. Enter through a lovely porch into a sunlit foyer and spacious living room with high ceilings and a new stone/gas fireplace. The eat-in kitchen includes updated appliances and a separate dining area. Enjoy incredible views from the deck, complete with a natural gas line for grilling. The main level features an office, full bathroom, and a mud/laundry room leading to a 3-car garage. Upstairs, find a luxury primary suite and two additional bedrooms. The finished basement offers a wet bar, gaming areas, and a guest suite. The property includes beautiful landscaping, a paved driveway, and is only 5-10 minutes from shopping. Recent upgrades enhance the home's appeal. Don't miss the views!



K.C. Golfinopoulos
 720-750-2269
 mountainrealtykc@gmail.com
<https://mountainrealtycolorado.com/>



Scan code
 for more
 property
 details



32555 Meadowridge Lane, Pine, CO 80470 – all levels



TOTAL: 4262 sq. ft
BELOW GROUND: 1432 sq. ft, FLOOR 2: 1606 sq. ft, FLOOR 3: 1224 sq. ft
EXCLUDED AREAS: ELECTRICAL ROOM: 80 sq. ft, GARAGE: 623 sq. ft, BALCONY: 389 sq. ft,
FIREPLACE: 13 sq. ft, OPEN TO BELOW: 135 sq. ft

Floor Plan Created By V1photos.com, Measurements Deamed Highly Reliable But Not Guaranteed.



Disclaimer: Sizes and Dimensions are Approximate, Actual May Vary.



K.C. Golfopoulos
720-750-2269
mountainrealtykc@gmail.com
<https://mountainrealtycolorado.com/>



Scan code
for more
property
details

