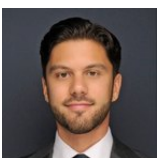


Single Family



2352 SQFT



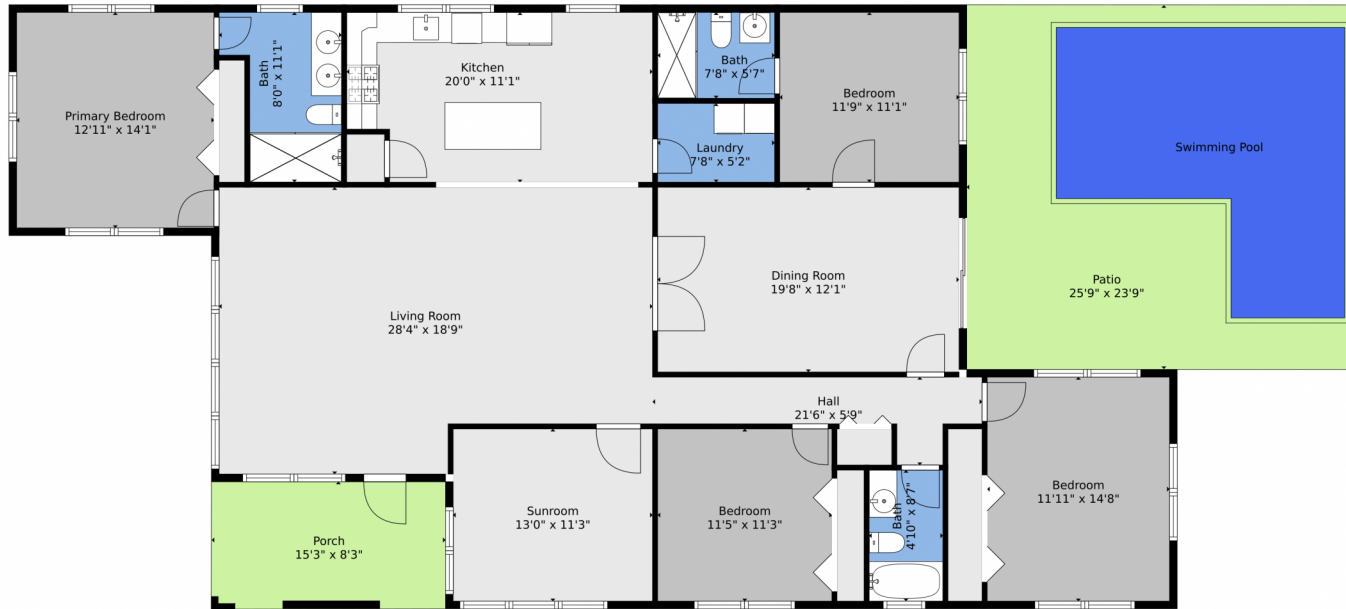
Jonathan Kotler
786-520-1923
jkotler@kw.com



Scan code
for more
property
details



1046 Tyler Street, Hollywood, FL 33019 – Main Level

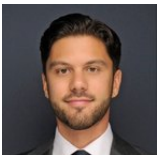


TOTAL: 2120 sq. ft
FLOOR 1: 2120 sq. ft
EXCLUDED AREAS: PORCH: 127 sq. ft, PATIO: 345 sq. ft

Floor Plan Created By V1photos.com, Measurements Deamed Highly Reliable But Not Guaranteed.



Disclaimer: Sizes and Dimensions are Approximate, Actual May Vary.



Jonathan Kotler
786-520-1923
jkotler@kw.com

