


 Single Family

 2706 SQFT

 4 Beds

 3 Baths



**Taylor Haas**  
 303-665-7368  
 taylorh@coloradorpm.com  
<https://www.coloradorpm.com/available-rental-properties-denver>



# 628 South Jasmine Way, Denver, CO 80224 – Main Level



**TOTAL: 2519 sq. ft**  
BELOW GROUND: 972 sq. ft, FLOOR 2: 1547 sq. ft  
EXCLUDED AREAS: STORAGE: 57 sq. ft, PATIO: 661 sq. ft, PORCH: 246 sq. ft  
Floor Plan Created By V1photos.com, Measurements Deamed Highly Reliable But Not Guaranteed.



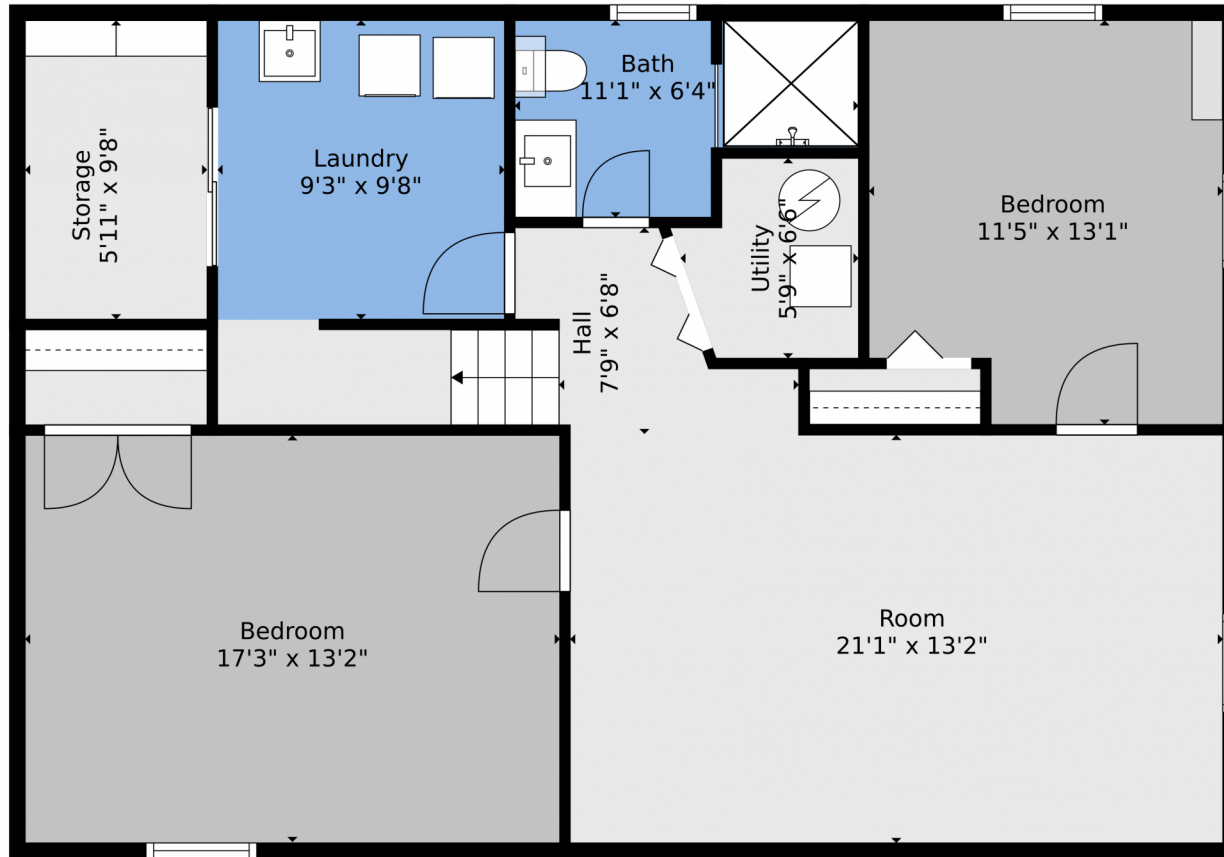
Disclaimer: Sizes and Dimensions are Approximate, Actual May Vary.



**Taylor Haas**  
303-665-7368  
taylorh@coloradorpm.com  
<https://www.coloradorpm.com/available-rental-properties-denver>



628 South Jasmine Way, Denver, CO 80224 – Lower Level



**TOTAL: 2519 sq. ft**  
BELOW GROUND: 972 sq. ft, FLOOR 2: 1547 sq. ft  
EXCLUDED AREAS: STORAGE: 57 sq. ft, PATIO: 661 sq. ft, PORCH: 246 sq. ft  
Floor Plan Created By V1photos.com, Measurements Deamed Highly Reliable But Not Guaranteed.



Disclaimer: Sizes and Dimensions are Approximate, Actual May Vary.



**Taylor Haas**  
303-665-7368  
taylorh@coloradorpm.com  
<https://www.coloradorpm.com/available-rental-properties-denver>



Scan code  
for more  
property  
details



Floor 1

Floor 2



**TOTAL: 2519 sq. ft**  
BELOW GROUND: 972 sq. ft, FLOOR 2: 1547 sq. ft  
EXCLUDED AREAS: STORAGE: 57 sq. ft, PATIO: 661 sq. ft, PORCH: 246 sq. ft  
Floor Plan Created By V1photos.com, Measurements Deamed Highly Reliable But Not Guaranteed.

Disclaimer: Sizes and Dimensions are Approximate, Actual May Vary.



**Taylor Haas**  
303-665-7368  
taylorh@coloradorm.com  
<https://www.coloradorm.com/available-rental-properties-denver>



Scan code  
for more  
property  
details

