



9651 Lameria Drive
 Littleton, CO 80130
 COMMUNITY: Highlands Ranch Eastridge

MLS # 4848566
 PRICE \$595,000



Single Family 1,959 SQFT 3 Beds 2/1 Baths 2 Car

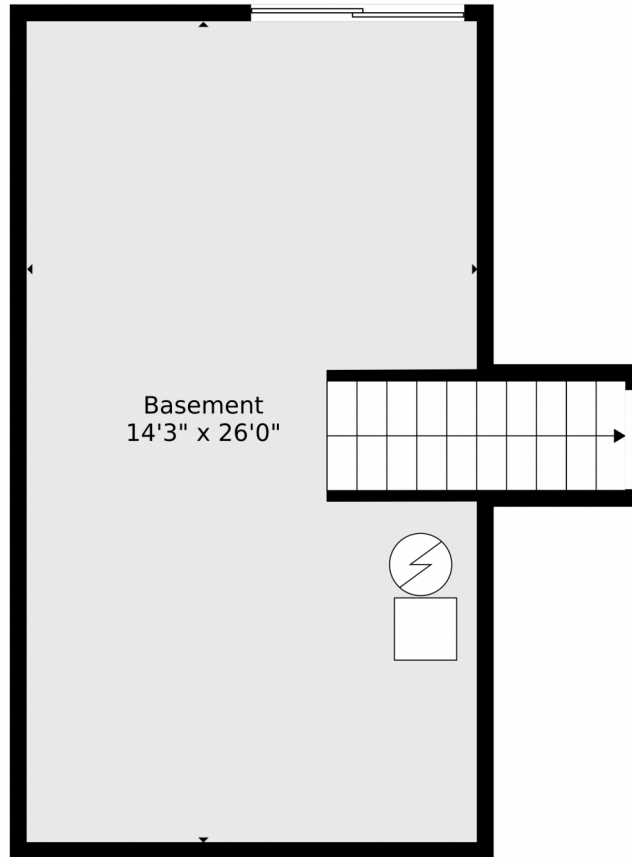
PROPERTY DETAILS

Introducing a beautiful property in Highlands Ranch Eastridge. This single-family home has 3 bedrooms, 2.5 bathrooms, and a partial basement. The living space is 1,959 square feet. The home has a bright and spacious dining area with oak hardwood flooring. The living room is cozy with carpeted floors and a textured ceiling. The kitchen is equipped with new stainless steel appliances, skylights, and a center island. The family room has a gas log fireplace and access to the backyard. The primary bedroom has an en-suite bathroom and a walk-in closet. There are two additional bedrooms and a full bath. The backyard is private and fenced with a deck and patio. The location is convenient to amenities and schools. Don't miss the opportunity to see this beautiful home. Contact us for a private showing.



Vicky Garfias-O'Brien
 303-669-3962
 vickygarfiasobri@kw.com





TOTAL: 1447 sq. ft
BELOW GROUND: 0 sq. ft, FLOOR 2: 335 sq. ft, FLOOR 3: 451 sq. ft, FLOOR 4: 661 sq. ft
EXCLUDED AREAS: BASEMENT: 388 sq. ft, DECK: 63 sq. ft, GARAGE: 363 sq. ft,
FIREPLACE: 11 sq. ft, PORCH: 31 sq. ft

Floor Plan Created By V1photos.com. Measurements Deamed Highly Reliable But Not Guaranteed.

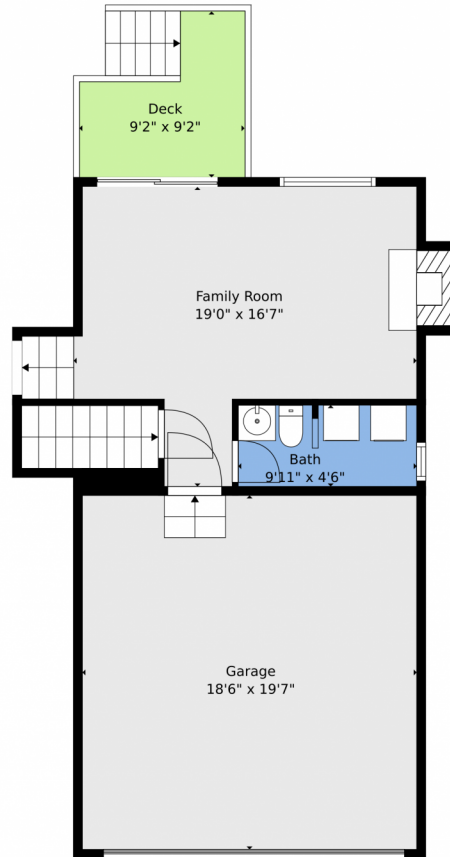


Disclaimer: Sizes and Dimensions are Approximate, Actual May Vary.



Vicky Garfias-O'Brien
303-669-3962
vickygarfiasobri@kw.com





TOTAL: 1447 sq. ft
BELOW GROUND: 0 sq. ft, FLOOR 2: 335 sq. ft, FLOOR 3: 451 sq. ft, FLOOR 4: 661 sq. ft
EXCLUDED AREAS: BASEMENT: 388 sq. ft, DECK: 63 sq. ft, GARAGE: 363 sq. ft,
FIREPLACE: 11 sq. ft, PORCH: 31 sq. ft

Floor Plan Created By V1photos.com, Measurements Deamed Highly Reliable But Not Guaranteed.



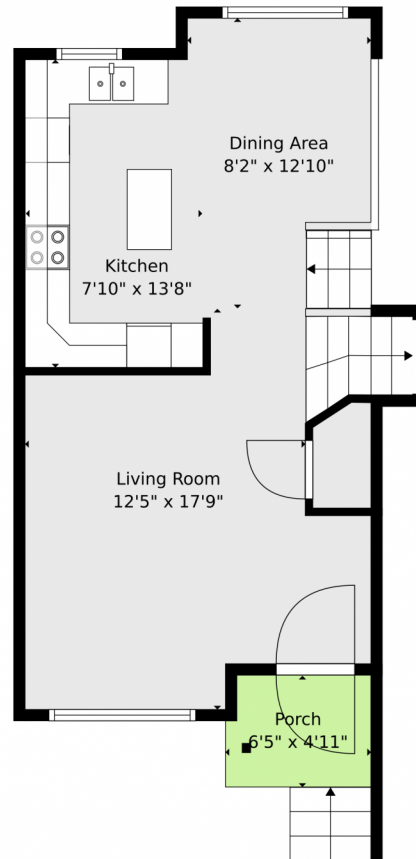
Disclaimer: Sizes and Dimensions are Approximate, Actual May Vary.



Vicky Garfias-O'Brien
303-669-3962
vickygarfiasobri@kw.com



Scan code
for more
property
details



TOTAL: 1447 sq. ft
BELOW GROUND: 0 sq. ft, FLOOR 2: 335 sq. ft, FLOOR 3: 451 sq. ft, FLOOR 4: 661 sq. ft
EXCLUDED AREAS: BASEMENT: 388 sq. ft, DECK: 63 sq. ft, GARAGE: 363 sq. ft,
FIREPLACE: 11 sq. ft, PORCH: 31 sq. ft

Floor Plan Created By V1photos.com. Measurements Deamed Highly Reliable But Not Guaranteed.

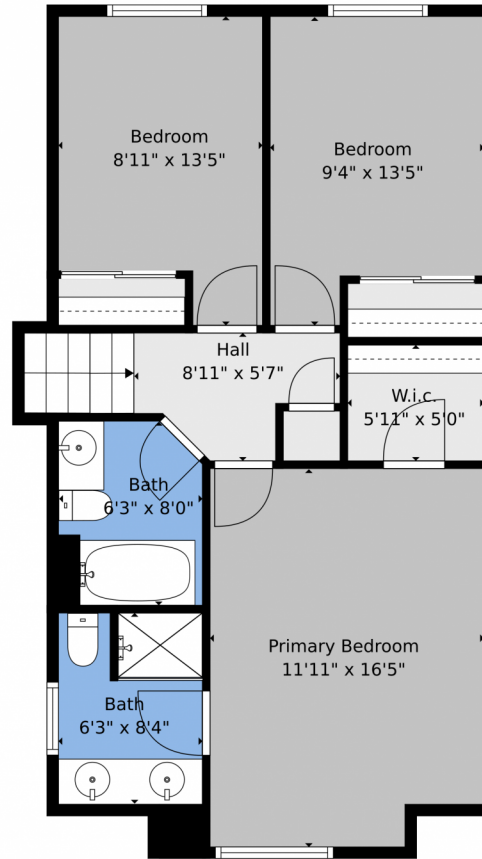


Disclaimer: Sizes and Dimensions are Approximate, Actual May Vary.



Vicky Garfias-O'Brien
303-669-3962
vickygarfiasobri@kw.com





TOTAL: 1447 sq. ft
BELOW GROUND: 0 sq. ft, FLOOR 2: 335 sq. ft, FLOOR 3: 451 sq. ft, FLOOR 4: 661 sq. ft
EXCLUDED AREAS: BASEMENT: 388 sq. ft, DECK: 63 sq. ft, GARAGE: 363 sq. ft,
FIREPLACE: 11 sq. ft, PORCH: 31 sq. ft

Floor Plan Created By V1photos.com, Measurements Deamed Highly Reliable But Not Guaranteed.



Disclaimer: Sizes and Dimensions are Approximate, Actual May Vary.



Vicky Garfias-O'Brien
303-669-3962
vickygarfiasobri@kw.com



Scan code
for more
property
details



TOTAL: 1447 sq. ft
BELOW GROUND: 0 sq. ft, FLOOR 2: 335 sq. ft, FLOOR 3: 451 sq. ft, FLOOR 4: 661 sq. ft
EXCLUDED AREAS: BASEMENT: 388 sq. ft, DECK: 63 sq. ft, GARAGE: 363 sq. ft,
FIREPLACE: 11 sq. ft, PORCH: 31 sq. ft

Floor Plan Created By V1photos.com. Measurements Deamed Highly Reliable But Not Guaranteed.



Disclaimer: Sizes and Dimensions are Approximate, Actual May Vary.



Vicky Garfias-O'Brien
303-669-3962
vickygarfiasobri@kw.com

