



Single Family



4650 SQFT



4 Beds



4 Baths



3 Car



0.19 Acre

PROPERTY DETAILS

Beautiful home in the sought-after Piney Creek neighborhood! This spacious former model home features stunning curb appeal and a welcoming front patio. Inside, the foyer leads to a bright living and dining area. The chef's kitchen boasts stainless steel appliances, granite countertops, and an extended island. Cozy up in the family room with vaulted ceilings and a wood-burning fireplace. The main floor also includes a large office, ¾ bathroom, and laundry room. Upstairs, the oversized primary bedroom offers a sitting area, vaulted ceilings, and a luxurious 5-piece bathroom. Three additional bedrooms and two baths complete the upper level. The unfinished basement allows for future expansion. Enjoy the large deck and manicured lawn, plus community amenities like a pool and playground. Conveniently located near top schools, shopping, and transportation. Don't miss this dream home opportunity!



Beth Gibson
720-849-3577
bethgibson@kw.com
<https://bethgibson.kw.com/>

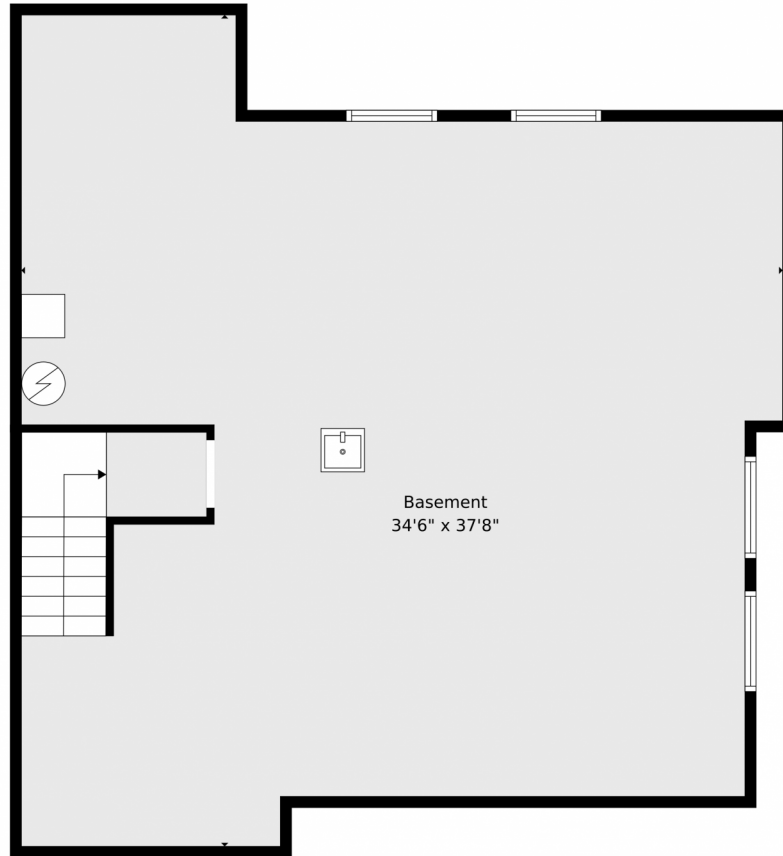


Phil Gibson
303-325-6020
philgibson@kw.com



Scan code
for more
property
details





TOTAL: 3367 sq. ft
BELOW GROUND: 0 sq. ft, FLOOR 2: 1761 sq. ft, FLOOR 3: 1606 sq. ft
EXCLUDED AREAS: BASEMENT: 1101 sq. ft, GARAGE: 657 sq. ft, DECK: 391 sq. ft,
PORCH: 237 sq. ft, OPEN TO BELOW: 510 sq. ft

Floor Plan Created By V1photos.com. Measurements Deamed Highly Reliable But Not Guaranteed.



Disclaimer: Sizes and Dimensions are Approximate, Actual May Vary.



Beth Gibson
720-849-3577
bethgibson@kw.com
<https://bethgibson.kw.com/>



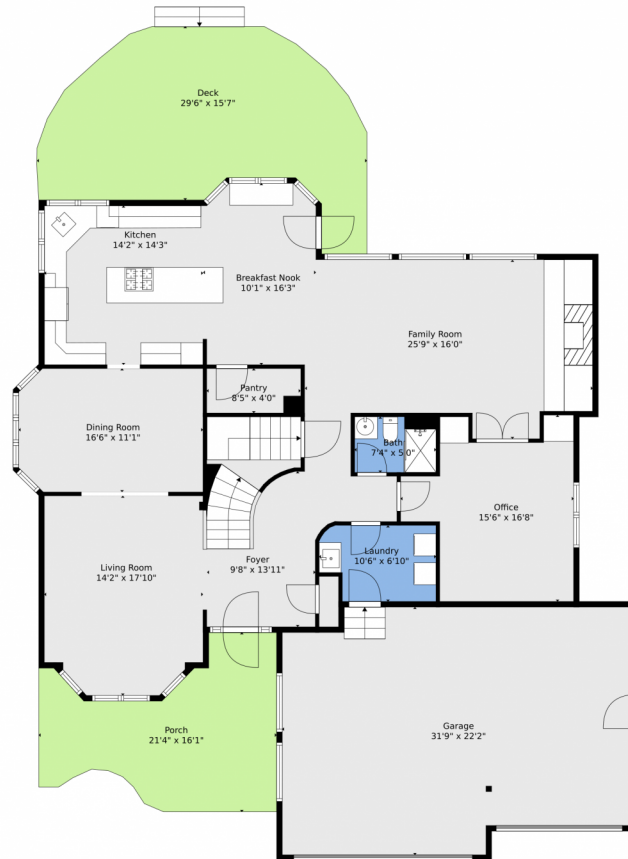
Phil Gibson
303-325-6020
philgibson@kw.com



Scan code
for more
property
details



5588 S Jasper Way, Centennial, CO 80015 – Main Level



TOTAL: 3367 sq. ft
BELOW GROUND: 0 sq. ft, FLOOR 2: 1761 sq. ft, FLOOR 3: 1606 sq. ft
EXCLUDED AREAS: BASEMENT: 1101 sq. ft, GARAGE: 657 sq. ft, DECK: 391 sq. ft,
PORCH: 237 sq. ft, OPEN TO BELOW: 510 sq. ft

Floor Plan Created By V1photos.com. Measurements Deemed Highly Reliable But Not Guaranteed.



Disclaimer: Sizes and Dimensions are Approximate, Actual May Vary.



Beth Gibson
720-849-3577
bethgibson@kw.com
<https://bethgibson.kw.com/>



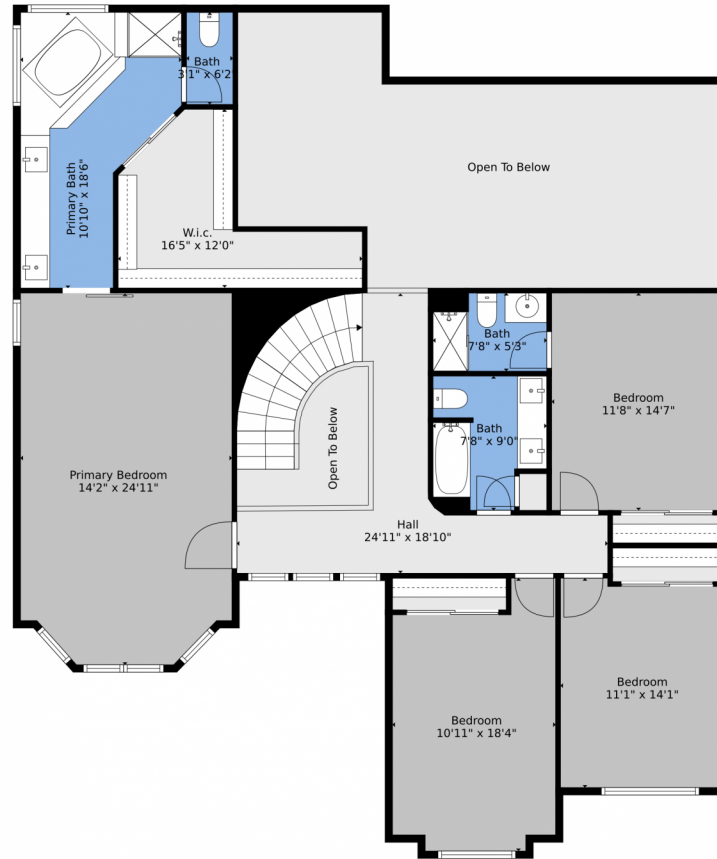
Phil Gibson
303-325-6020
philgibson@kw.com



Scan code
for more
property
details



5588 S Jasper Way, Centennial, CO 80015 – Upper Level



TOTAL: 3367 sq. ft
BELOW GROUND: 0 sq. ft, FLOOR 2: 1761 sq. ft, FLOOR 3: 1606 sq. ft
EXCLUDED AREAS: BASEMENT: 1101 sq. ft, GARAGE: 657 sq. ft, DECK: 391 sq. ft,
PORCH: 237 sq. ft, OPEN TO BELOW: 510 sq. ft

Floor Plan Created By V1photos.com, Measurements Deamed Highly Reliable But Not Guaranteed.



Disclaimer: Sizes and Dimensions are Approximate, Actual May Vary.



Beth Gibson
720-849-3577
bethgibson@kw.com
<https://bethgibson.kw.com/>



Phil Gibson
303-325-6020
philgibson@kw.com



Scan code
for more
property
details



5588 S Jasper Way, Centennial, CO 80015 – All Levels



TOTAL: 3367 sq. ft
 BELOW GROUND: 0 sq. ft, FLOOR 2: 1761 sq. ft, FLOOR 3: 1606 sq. ft
 EXCLUDED AREAS: BASEMENT: 1101 sq. ft, GARAGE: 657 sq. ft, DECK: 391 sq. ft,
 PORCH: 237 sq. ft, OPEN TO BELOW: 510 sq. ft

Floor Plan Created By V1photos.com. Measurements Deemed Highly Reliable But Not Guaranteed.



Disclaimer: Sizes and Dimensions are Approximate, Actual May Vary.



Beth Gibson
 720-849-3577
 bethgibson@kw.com
<https://bethgibson.kw.com/>



Phil Gibson
 303-325-6020
 philgibson@kw.com



Scan code
 for more
 property
 details

