





 Single Family

 1624 SQFT

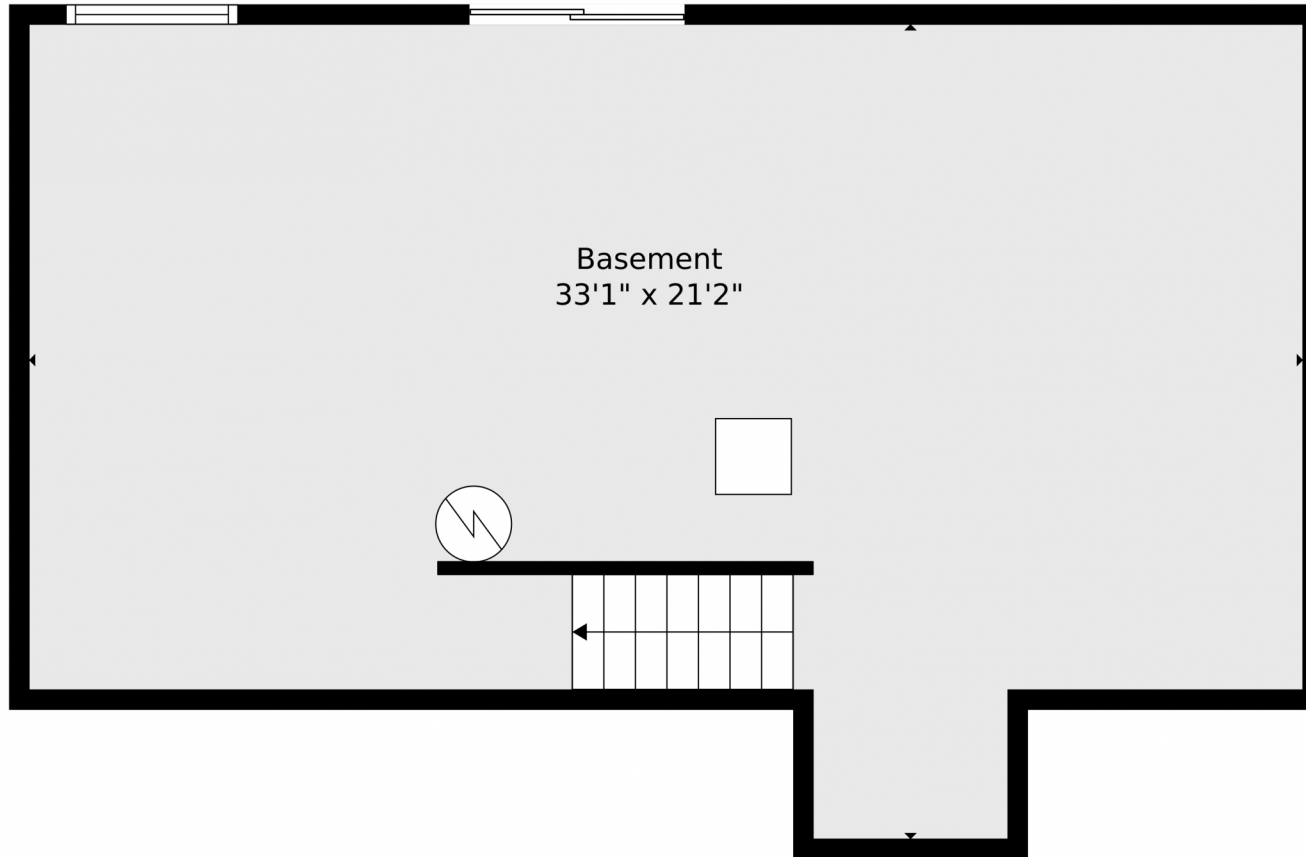
 4 Beds

 2/1 Baths



**Taylor Haas**  
303-665-7368  
taylorh@coloradorpm.com  
<https://www.coloradorpm.com/available-rental-properties-denver>





**TOTAL: 1535 sq. ft**  
BELOW GROUND: 0 sq. ft, FLOOR 2: 643 sq. ft, FLOOR 3: 892 sq. ft  
EXCLUDED AREAS: BASEMENT: 592 sq. ft, GARAGE: 412 sq. ft, DECK: 56 sq. ft,  
PORCH: 27 sq. ft, OPEN TO BELOW: 47 sq. ft

Floor Plan Created By V1photos.com. Measurements Deamed Highly Reliable But Not Guaranteed.



Disclaimer: Sizes and Dimensions are Approximate, Actual May Vary.



**Taylor Haas**  
303-665-7368  
taylorh@coloradorpm.com  
<https://www.coloradorpm.com/available-rental-properties-denver>



Scan code  
for more  
property  
details

# 8431 Meadowcrest Drive, Fountain, CO 80817 – Main Level



**TOTAL: 1535 sq. ft**  
BELOW GROUND: 0 sq. ft, FLOOR 2: 643 sq. ft, FLOOR 3: 892 sq. ft  
EXCLUDED AREAS: BASEMENT: 592 sq. ft, GARAGE: 412 sq. ft, DECK: 56 sq. ft,  
PORCH: 27 sq. ft, OPEN TO BELOW: 47 sq. ft

Floor Plan Created By V1photos.com. Measurements Deamed Highly Reliable But Not Guaranteed.



Disclaimer: Sizes and Dimensions are Approximate, Actual May Vary.



**Taylor Haas**

303-665-7368

taylorh@coloradorpm.com

<https://www.coloradorpm.com/available-rental-properties-denver>



Scan code  
for more  
property  
details



# 8431 Meadowcrest Drive, Fountain, CO 80817 – Upper Level



**TOTAL: 1535 sq. ft**  
BELOW GROUND: 0 sq. ft, FLOOR 2: 643 sq. ft, FLOOR 3: 892 sq. ft  
EXCLUDED AREAS: BASEMENT: 592 sq. ft, GARAGE: 412 sq. ft, DECK: 56 sq. ft,  
PORCH: 27 sq. ft, OPEN TO BELOW: 47 sq. ft

Floor Plan Created By V1photos.com, Measurements Deamed Highly Reliable But Not Guaranteed.



Disclaimer: Sizes and Dimensions are Approximate, Actual May Vary.



**Taylor Haas**

303-665-7368

taylorh@coloradorpm.com

<https://www.coloradorpm.com/available-rental-properties-denver>



Scan code  
for more  
property  
details





# 8431 Meadowcrest Drive, Fountain, CO 80817 – All Levels



**TOTAL: 1535 sq. ft**  
BELOW GROUND: 0 sq. ft, FLOOR 2: 643 sq. ft, FLOOR 3: 892 sq. ft  
EXCLUDED AREAS: BASEMENT: 592 sq. ft, GARAGE: 412 sq. ft, DECK: 56 sq. ft,  
PORCH: 27 sq. ft, OPEN TO BELOW: 47 sq. ft

Floor Plan Created By V1photos.com, Measurements Deamed Highly Reliable But Not Guaranteed.

Disclaimer: Sizes and Dimensions are Approximate, Actual May Vary.



**Taylor Haas**  
303-665-7368  
taylorh@coloradorpm.com  
<https://www.coloradorpm.com/available-rental-properties-denver>



Scan code  
for more  
property  
details

