



Single Family



4218 SQFT



5 Beds



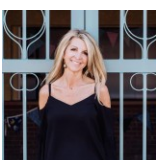
2/1 Baths



3 Car



0.82 Acre



Christy Hepp
303-910-5393
cnishi1068@msn.com
<https://christysellscolorado.com>



Scan code
for more
property
details



14149 West 63rd Place, Arvada, CO 80004 – Main Level



TOTAL: 3520 sq. ft
BELOW GROUND: 1107 sq. ft, FLOOR 2: 1713 sq. ft, FLOOR 3: 700 sq. ft
EXCLUDED AREAS: STORAGE: 382 sq. ft, ELECTRICAL ROOM: 55 sq. ft, PATIO: 196 sq. ft,
PORCH: 107 sq. ft, DECK: 475 sq. ft, GARAGE: 592 sq. ft,
OPEN TO BELOW: 361 sq. ft

Floor Plan Created By V1photos.com, Measurements Deamed Highly Reliable But Not Guaranteed.



Disclaimer: Sizes and Dimensions are Approximate, Actual May Vary.



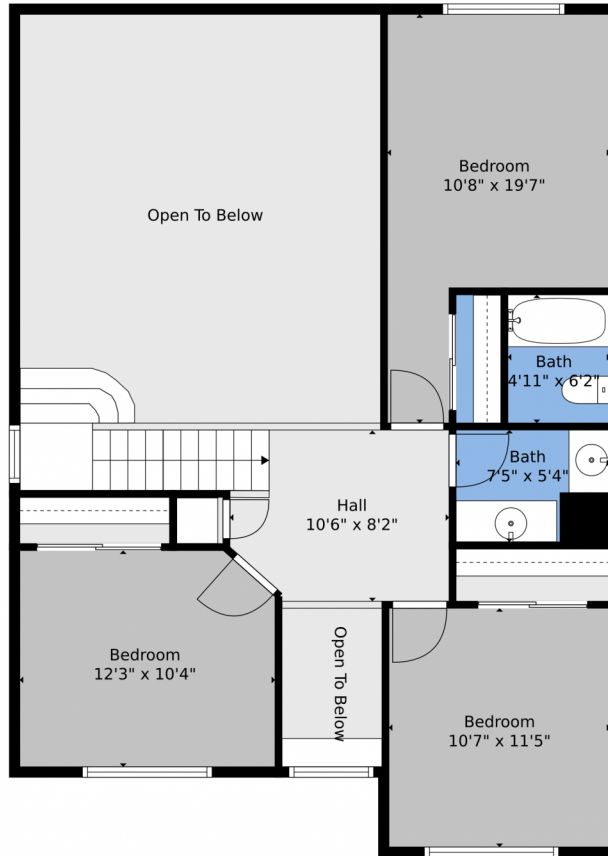
Christy Hepp
303-910-5393
cnishi1068@msn.com
<https://christysellscolorado.com>



Scan code
for more
property
details



14149 West 63rd Place, Arvada, CO 80004 – Upper Level



TOTAL: 3520 sq. ft
BELOW GROUND: 1107 sq. ft, FLOOR 2: 1713 sq. ft, FLOOR 3: 700 sq. ft
EXCLUDED AREAS: STORAGE: 382 sq. ft, ELECTRICAL ROOM: 55 sq. ft, PATIO: 196 sq. ft,
PORCH: 107 sq. ft, DECK: 475 sq. ft, GARAGE: 592 sq. ft,
OPEN TO BELOW: 361 sq. ft

Floor Plan Created By V1photos.com. Measurements Deamed Highly Reliable But Not Guaranteed.



Disclaimer: Sizes and Dimensions are Approximate, Actual May Vary.



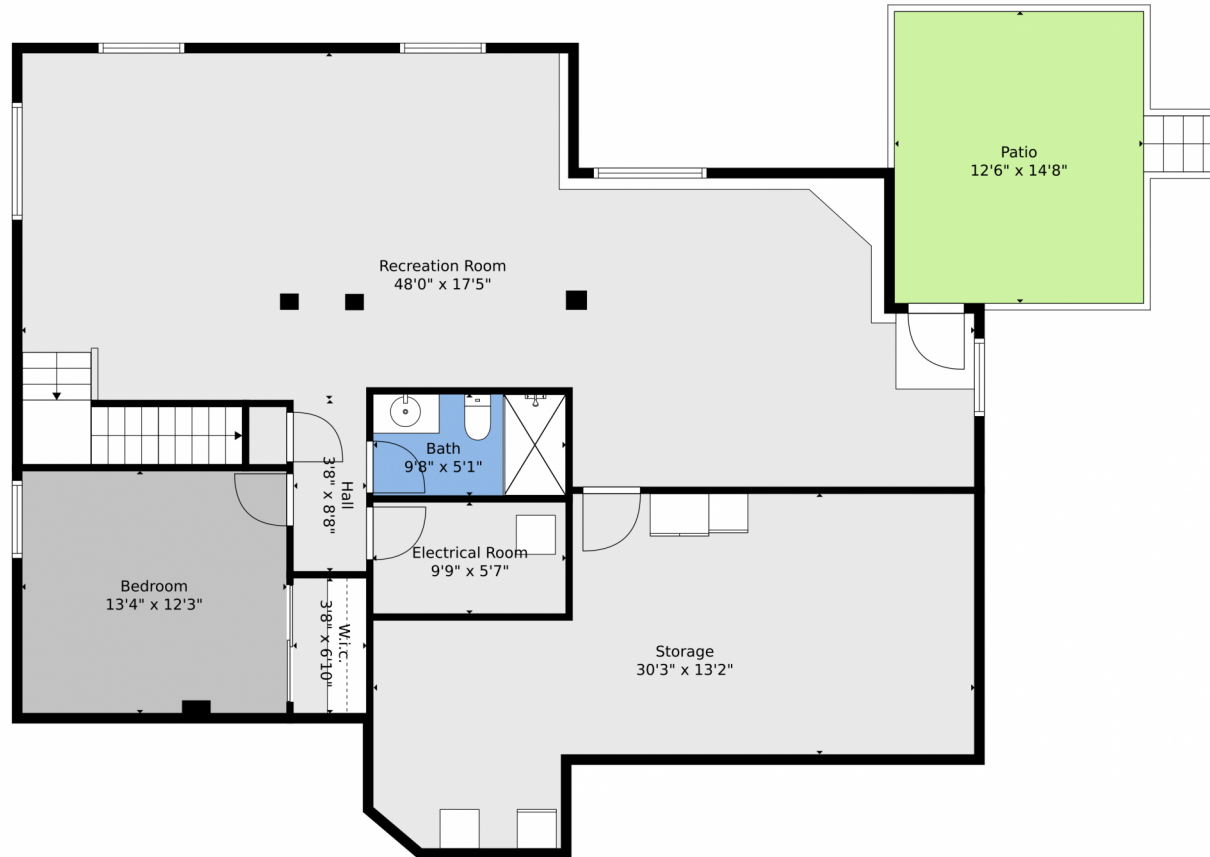
Christy Hepp
303-910-5393
cnishi1068@msn.com
<https://christysellscolorado.com>



Scan code
for more
property
details



14149 West 63rd Place, Arvada, CO 80004 – Lower Level



TOTAL: 3520 sq. ft
BELOW GROUND: 1107 sq. ft, FLOOR 2: 1713 sq. ft, FLOOR 3: 700 sq. ft
EXCLUDED AREAS: STORAGE: 382 sq. ft, ELECTRICAL ROOM: 55 sq. ft, PATIO: 196 sq. ft,
PORCH: 107 sq. ft, DECK: 475 sq. ft, GARAGE: 592 sq. ft,
OPEN TO BELOW: 361 sq. ft

Floor Plan Created By V1photos.com, Measurements Deamed Highly Reliable But Not Guaranteed.



Disclaimer: Sizes and Dimensions are Approximate, Actual May Vary.



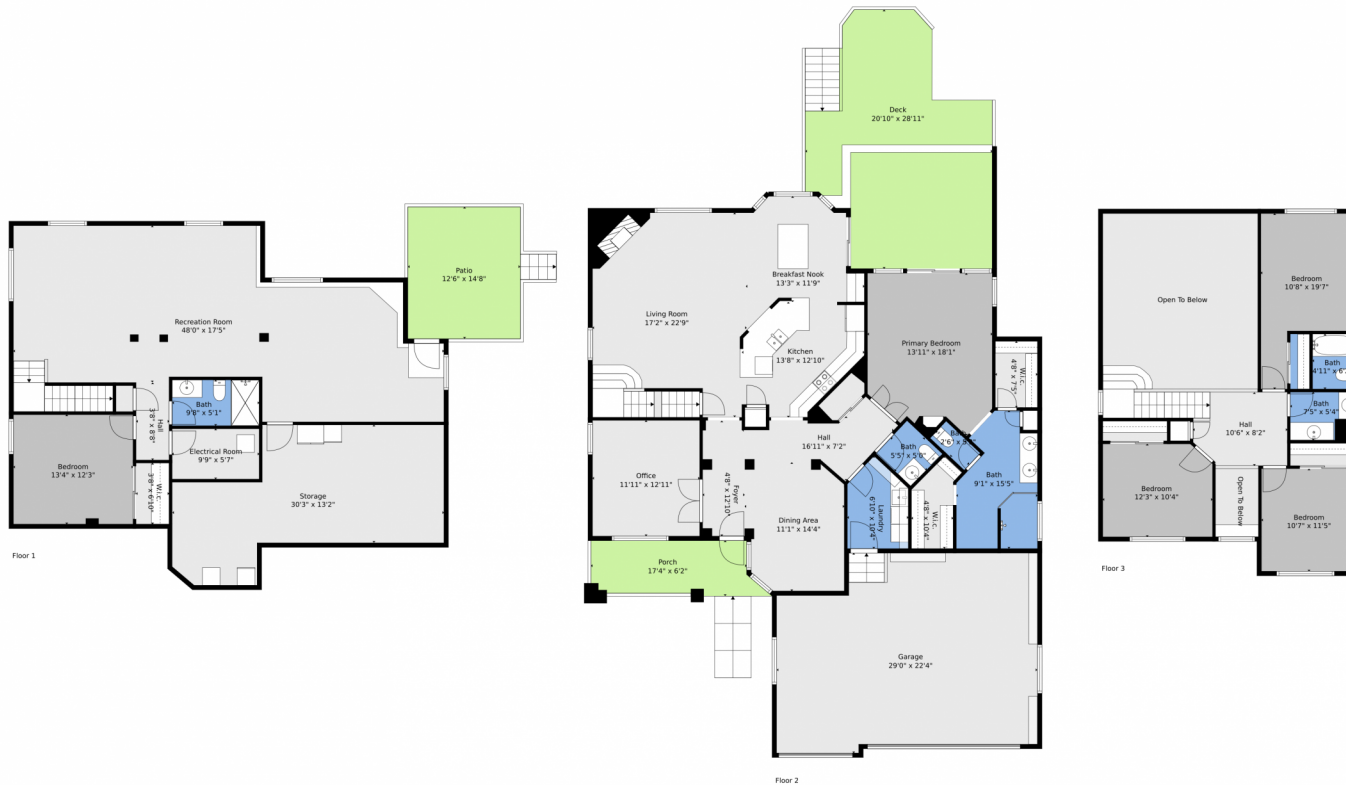
Christy Hepp
303-910-5393
cnishi1068@msn.com
<https://christysellscolorado.com>



Scan code
for more
property
details



14149 West 63rd Place, Arvada, CO 80004 – All Levels



TOTAL: 3520 sq. ft
 BELOW GROUND: 1107 sq. ft, FLOOR 2: 1713 sq. ft, FLOOR 3: 700 sq. ft
 EXCLUDED AREAS: STORAGE: 382 sq. ft, ELECTRICAL ROOM: 55 sq. ft, PATIO: 196 sq. ft,
 PORCH: 107 sq. ft, DECK: 475 sq. ft, GARAGE: 592 sq. ft,
 OPEN TO BELOW: 361 sq. ft

Floor Plan Created By V1photos.com, Measurements Deemed Highly Reliable But Not Guaranteed.



Disclaimer: Sizes and Dimensions are Approximate, Actual May Vary.



Christy Hepp
 303-910-5393
 cnishi1068@msn.com
<https://christysellscolorado.com>



Scan code
 for more
 property
 details

