



7863 Mule Deer Place  
 Littleton, CO 80125  
 COMMUNITY: Roxborough Village

MLS # 4407314  
 PRICE \$590,000



Single Family



2155 SQFT



4 Beds



2/1 Baths



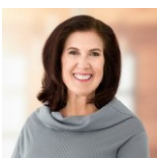
2 Car



0.12 Acre

## PROPERTY DETAILS

Beautifully updated with new interior paint carpet and newly refinished hardwood floors! This house feels like new with the bonus of mature landscaping. Walk in the front door and into a bright and open room with vaulted ceilings that makes a welcoming living room. You see an attractive staircase that leads up to the bedrooms and then pass into the open kitchen/ dining/ living areas. The kitchen is stylishly updated and provides a great use of the space with tons of storage. Off the back of the house is a large deck and lovely gardens where you can enjoy all the seasons of Colorado. Relax at the end of your day with this fantastic floor plan. Your spacious laundry room is on the main floor- convenience!. Upstairs the large primary suite is set apart from the other bedrooms. All the bedrooms are roomy with great closets. One of the bedrooms was used as an office and has some custom features. The basement is finished and is a really nice flex/bonus room with more storage options tucked away. Minutes to all conveniences- grocery, coffee, etc...you are nestled between the Foothills, State Forests and Parks, Trails and open space with easy access to Chatfield reservoir and Waterton Canyon. Easy access to C470 and the mountains!

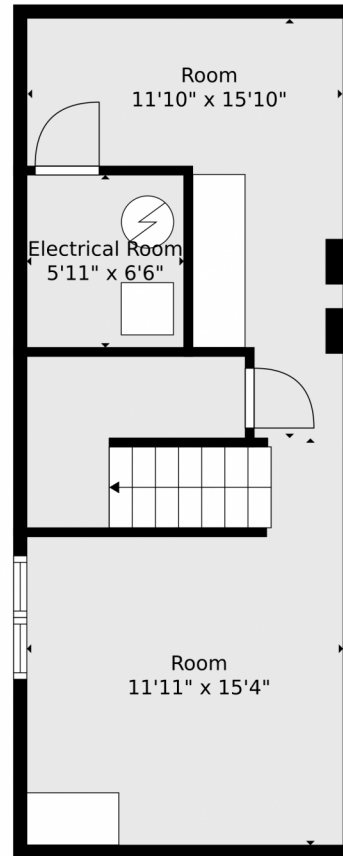


**Phoebe Nason**  
 303-725-2564  
 phoebenason@remax.net



Scan code  
 for more  
 property  
 details



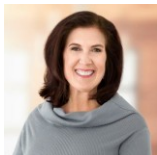


**TOTAL: 1957 sq. ft**  
BELOW GROUND: 334 sq. ft, FLOOR 2: 735 sq. ft, FLOOR 3: 888 sq. ft  
EXCLUDED AREAS: ELECTRICAL ROOM: 39 sq. ft, PORCH: 70 sq. ft, DECK: 477 sq. ft,  
GARAGE: 399 sq. ft, OPEN TO BELOW: 173 sq. ft

Floor Plan Created By V1photos.com. Measurements Deamed Highly Reliable But Not Guaranteed.

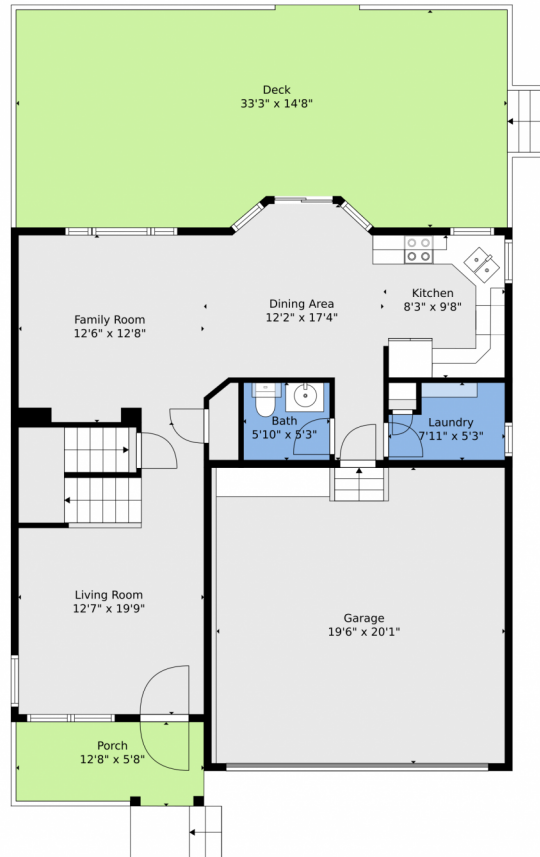


Disclaimer: Sizes and Dimensions are Approximate, Actual May Vary.



**Phoebe Nason**  
303-725-2564  
phoebenason@remax.net



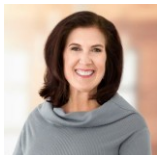


**TOTAL: 1957 sq. ft**  
BELOW GROUND: 334 sq. ft, FLOOR 2: 735 sq. ft, FLOOR 3: 888 sq. ft  
EXCLUDED AREAS: ELECTRICAL ROOM: 39 sq. ft, PORCH: 70 sq. ft, DECK: 477 sq. ft,  
GARAGE: 399 sq. ft, OPEN TO BELOW: 173 sq. ft

Floor Plan Created By V1photos.com. Measurements Deamed Highly Reliable But Not Guaranteed.



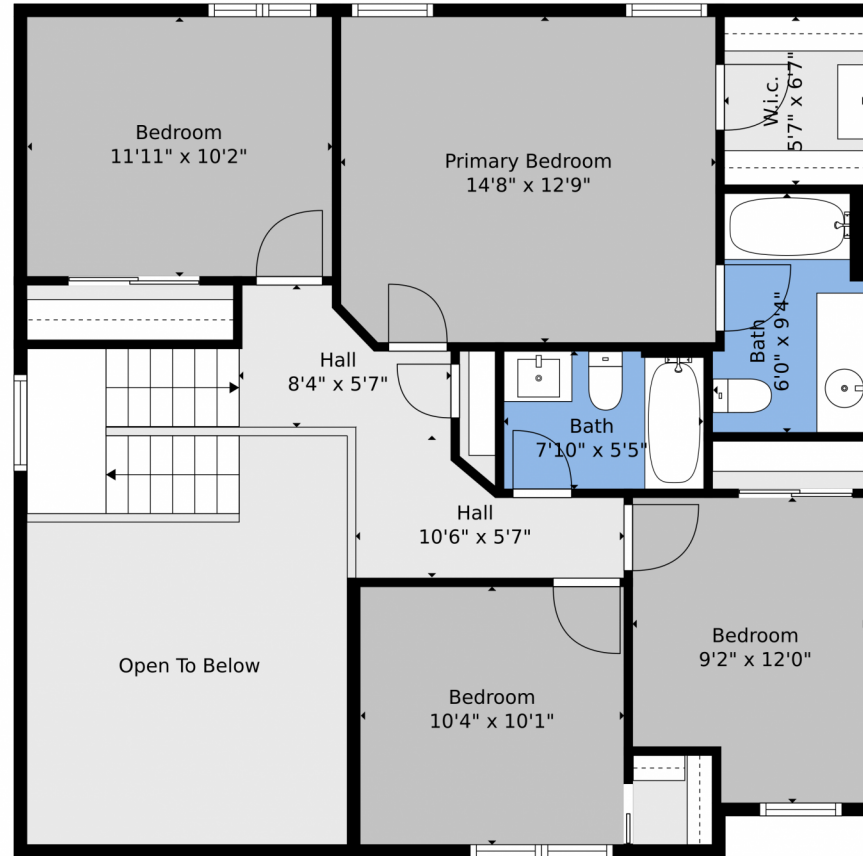
Disclaimer: Sizes and Dimensions are Approximate, Actual May Vary.



**Phoebe Nason**  
303-725-2564  
phoebenason@remax.net



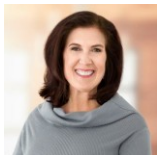
Scan code  
for more  
property  
details



**TOTAL: 1957 sq. ft**  
BELOW GROUND: 334 sq. ft, FLOOR 2: 735 sq. ft, FLOOR 3: 888 sq. ft  
EXCLUDED AREAS: ELECTRICAL ROOM: 39 sq. ft, PORCH: 70 sq. ft, DECK: 477 sq. ft,  
GARAGE: 399 sq. ft, OPEN TO BELOW: 173 sq. ft

Floor Plan Created By V1photos.com, Measurements Deamed Highly Reliable But Not Guaranteed.

Disclaimer: Sizes and Dimensions are Approximate, Actual May Vary.



**Phoebe Nason**  
303-725-2564  
phoebenason@remax.net



Scan code  
for more  
property  
details



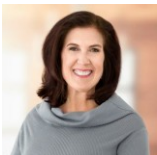


**TOTAL: 1957 sq. ft**  
 BELOW GROUND: 334 sq. ft, FLOOR 2: 735 sq. ft, FLOOR 3: 888 sq. ft  
 EXCLUDED AREAS: ELECTRICAL ROOM: 39 sq. ft, PORCH: 70 sq. ft, DECK: 477 sq. ft,  
 GARAGE: 399 sq. ft, OPEN TO BELOW: 173 sq. ft

Floor Plan Created By V1photos.com. Measurements Deamed Highly Reliable But Not Guaranteed.



Disclaimer: Sizes and Dimensions are Approximate, Actual May Vary.



**Phoebe Nason**  
 303-725-2564  
 phoebenason@remax.net

