




 Single Family

 1128 SQFT

 3 Beds

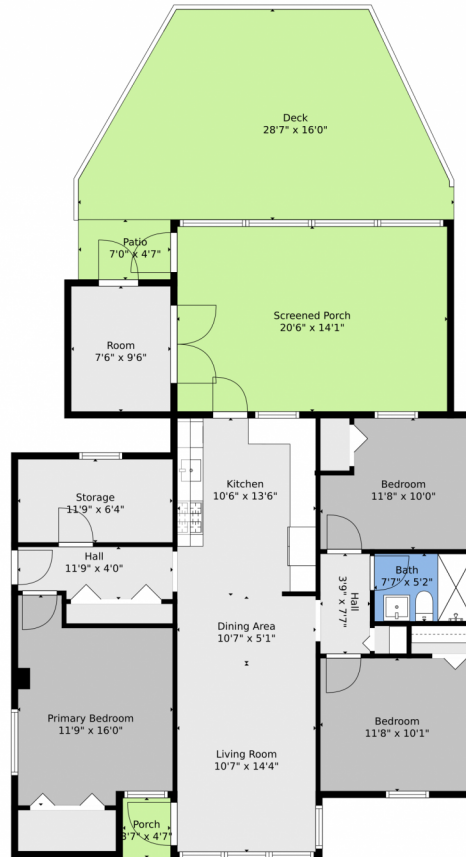
 1 Baths



Christopher Hall
954-707-1307
christopherhall@keyes.com



1041 Southwest 29th Street, Fort Lauderdale, FL 33315 – Main Level



TOTAL: 1028 sq. ft
FLOOR 1: 1028 sq. ft
EXCLUDED AREAS: STORAGE: 75 sq. ft, SCREENED PORCH: 289 sq. ft, PORCH: 17 sq. ft,
PATIO: 32 sq. ft, DECK: 364 sq. ft

Floor Plan Created By V1photos.com, Measurements Deamed Highly Reliable But Not Guaranteed.



Disclaimer: Sizes and Dimensions are Approximate, Actual May Vary.



Christopher Hall
954-707-1307
christopherhall@keyes.com



Scan code
for more
property
details