

Single Family



1710 SQFT



3 Beds



2 Baths



1 Car



0.26 Acre



Alexis Foster

970-310-6999

alexisfoster@windermere.com



Scan code
for more
property
details



409 East Prospect Road, Fort Collins, CO 80525 – Main Level



TOTAL: 2393 sq. ft
BELOW GROUND: 819 sq. ft, FLOOR 2: 1346 sq. ft, FLOOR 3: 228 sq. ft
EXCLUDED AREAS: ELECTRICAL ROOM: 64 sq. ft, PATIO: 575 sq. ft, GARAGE: 204 sq. ft,
STORAGE: 148 sq. ft, PORCH: 71 sq. ft, DECK: 86 sq. ft,
FIREPLACE: 7 sq. ft, LOW CEILING: 95 sq. ft

Floor Plan Created By V1photos.com, Measurements Deamed Highly Reliable But Not Guaranteed.



Disclaimer: Sizes and Dimensions are Approximate, Actual May Vary.

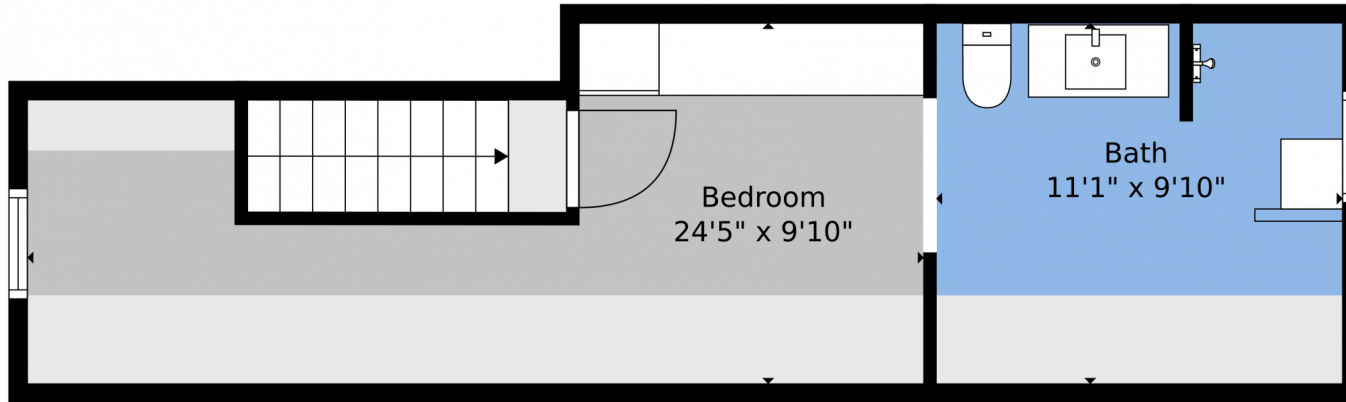


Alexis Foster
970-310-6999
alexisfoster@windermere.com



Scan code
for more
property
details

409 East Prospect Road, Fort Collins, CO 80525 – Upper Level



TOTAL: 2393 sq. ft
BELOW GROUND: 819 sq. ft, FLOOR 2: 1346 sq. ft, FLOOR 3: 228 sq. ft
EXCLUDED AREAS: ELECTRICAL ROOM: 64 sq. ft, PATIO: 575 sq. ft, GARAGE: 204 sq. ft,
STORAGE: 148 sq. ft, PORCH: 71 sq. ft, DECK: 86 sq. ft,
FIREPLACE: 7 sq. ft, LOW CEILING: 95 sq. ft

Floor Plan Created By V1photos.com. Measurements Deamed Highly Reliable But Not Guaranteed.



Disclaimer: Sizes and Dimensions are Approximate, Actual May Vary.



Alexis Foster
970-310-6999
alexisfoster@windermere.com



409 East Prospect Road, Fort Collins, CO 80525 – Lower Level



TOTAL: 2393 sq. ft
BELOW GROUND: 819 sq. ft, FLOOR 2: 1346 sq. ft, FLOOR 3: 228 sq. ft
EXCLUDED AREAS: ELECTRICAL ROOM: 64 sq. ft, PATIO: 575 sq. ft, GARAGE: 204 sq. ft,
STORAGE: 148 sq. ft, PORCH: 71 sq. ft, DECK: 86 sq. ft,
FIREPLACE: 7 sq. ft, LOW CEILING: 95 sq. ft

Floor Plan Created By V1photos.com. Measurements Deamed Highly Reliable But Not Guaranteed.



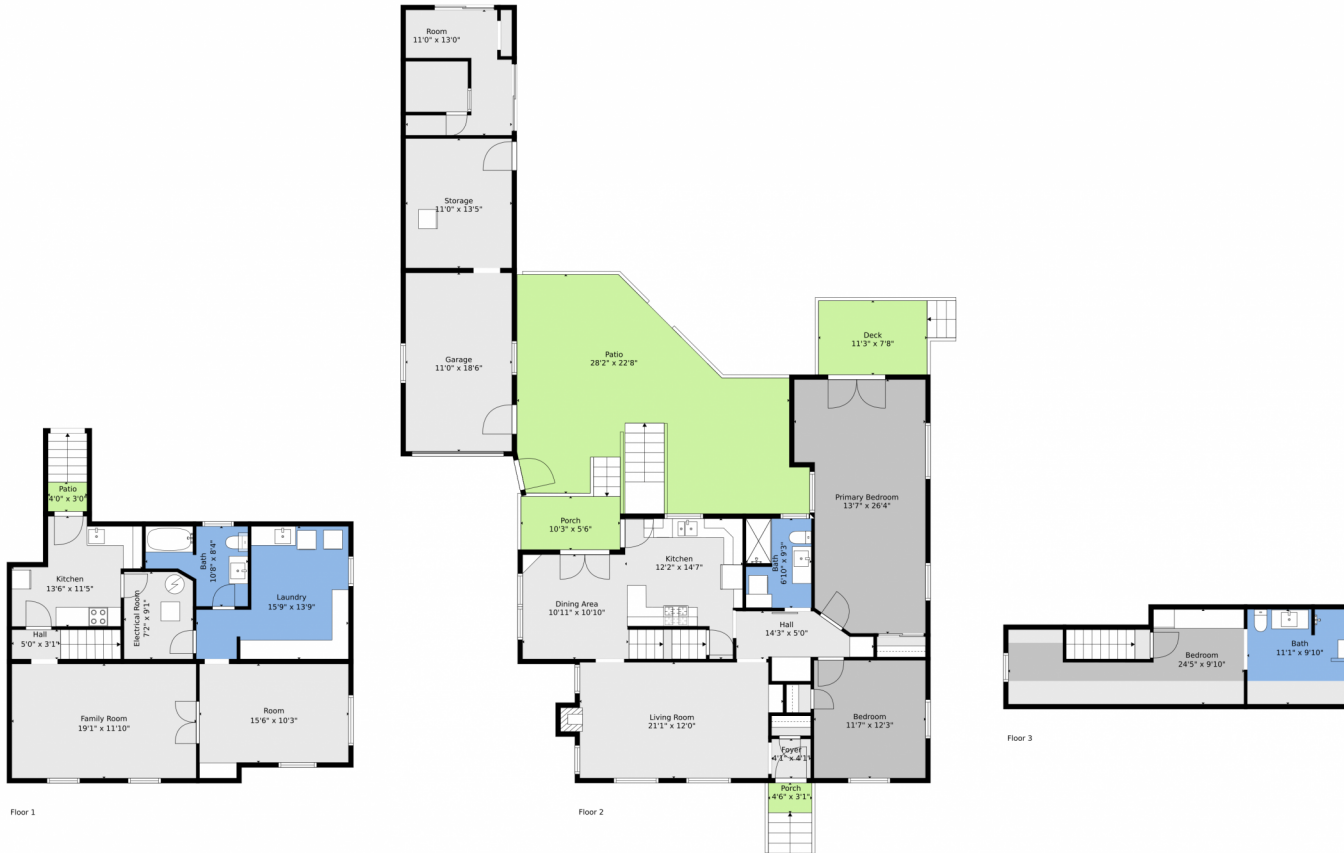
Disclaimer: Sizes and Dimensions are Approximate, Actual May Vary.



Alexis Foster
970-310-6999
alexisfoster@windermere.com



409 East Prospect Road, Fort Collins, CO 80525 – All Levels



Floor 1

Floor 2

Floor 3



TOTAL: 2393 sq. ft
 BELOW GROUND: 819 sq. ft, FLOOR 2: 1346 sq. ft, FLOOR 3: 228 sq. ft
 EXCLUDED AREAS: ELECTRICAL ROOM: 64 sq. ft, PATIO: 575 sq. ft, GARAGE: 204 sq. ft,
 STORAGE: 148 sq. ft, PORCH: 71 sq. ft, DECK: 86 sq. ft,
 FIREPLACE: 7 sq. ft, LOW CEILING: 95 sq. ft

Floor Plan Created By V1photos.com, Measurements Deamed Highly Reliable But Not Guaranteed.



Disclaimer: Sizes and Dimensions are Approximate, Actual May Vary.



Alexis Foster
 970-310-6999
 alexisfoster@windermere.com

