




 Single Family

 2180 SQFT

 4 Beds

 3 Baths



**Taylor Haas**  
303-665-7368  
taylorh@coloradorpm.com  
<https://www.coloradorpm.com/available-rental-properties-denver>



Scan code  
for more  
property  
details



# 780 Nickel Street, Broomfield, CO 80020 – Main Level



**TOTAL: 1930 sq. ft**  
BELOW GROUND: 849 sq. ft, FLOOR 2: 1081 sq. ft  
EXCLUDED AREAS: UTILITY: 90 sq. ft, GARAGE: 401 sq. ft, PORCH: 163 sq. ft,  
PATIO: 369 sq. ft

Floor Plan Created By V1photos.com, Measurements Deamed Highly Reliable But Not Guaranteed.

Disclaimer: Sizes and Dimensions are Approximate, Actual May Vary.

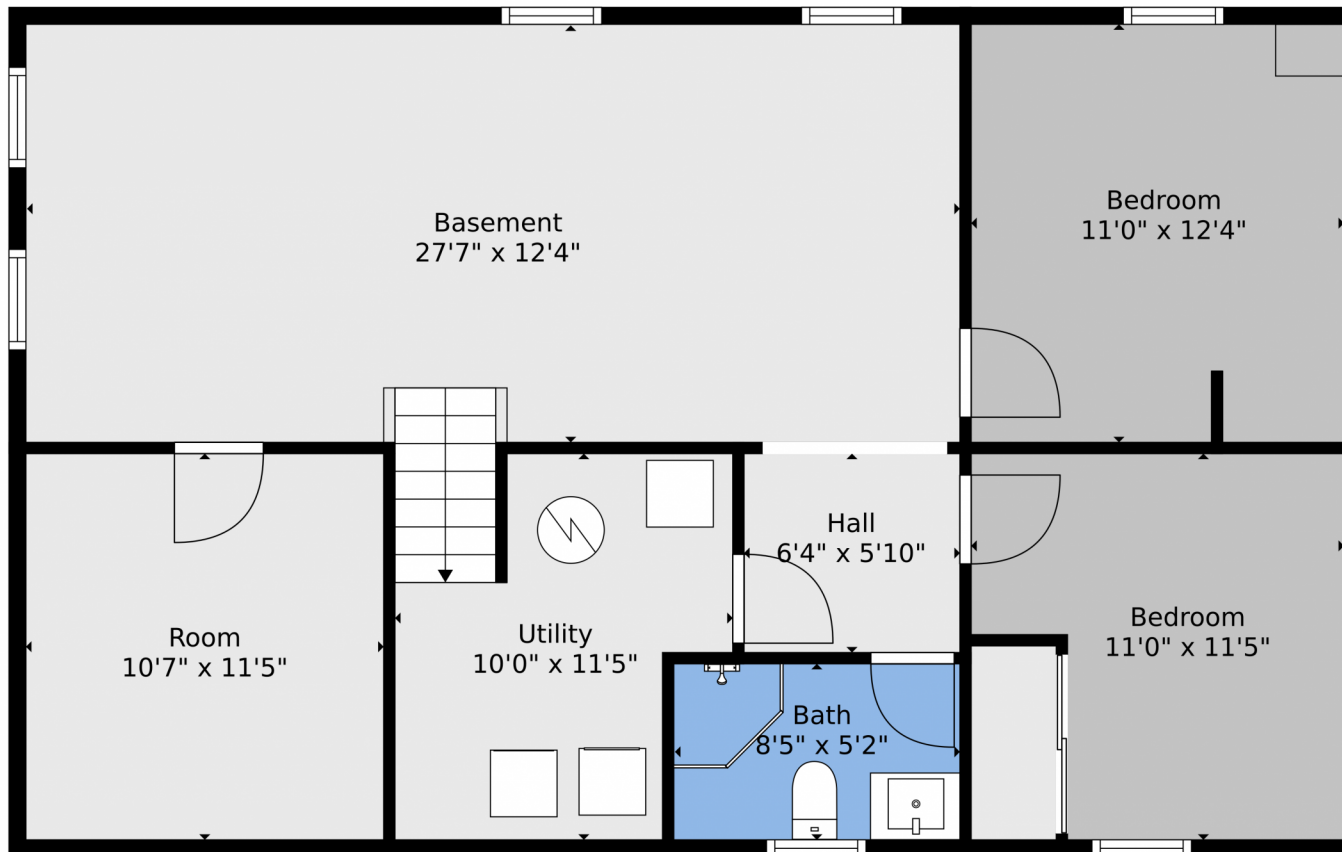


**Taylor Haas**  
303-665-7368  
taylorh@coloradorpm.com  
<https://www.coloradorpm.com/available-rental-properties-denver>



Scan code  
for more  
property  
details

780 Nickel Street, Broomfield, CO 80020 – Lower Level



**TOTAL: 1930 sq. ft**  
BELOW GROUND: 849 sq. ft, FLOOR 2: 1081 sq. ft  
EXCLUDED AREAS: UTILITY: 90 sq. ft, GARAGE: 401 sq. ft, PORCH: 163 sq. ft,  
PATIO: 369 sq. ft

Floor Plan Created By V1photos.com. Measurements Deamed Highly Reliable But Not Guaranteed.

Disclaimer: Sizes and Dimensions are Approximate, Actual May Vary.



**Taylor Haas**  
303-665-7368  
taylorh@coloradorpm.com  
<https://www.coloradorpm.com/available-rental-properties-denver>



Scan code  
for more  
property  
details

# 780 Nickel Street, Broomfield, CO 80020 – All Levels



**TOTAL: 1930 sq. ft**  
BELOW GROUND: 849 sq. ft, FLOOR 2: 1081 sq. ft  
EXCLUDED AREAS: UTILITY: 90 sq. ft, GARAGE: 401 sq. ft, PORCH: 163 sq. ft,  
PATIO: 369 sq. ft

Floor Plan Created By V1photos.com, Measurements Deamed Highly Reliable But Not Guaranteed.



Disclaimer: Sizes and Dimensions are Approximate, Actual May Vary.



**Taylor Haas**  
303-665-7368  
taylorh@coloradorpm.com  
<https://www.coloradorpm.com/available-rental-properties-denver>

