



2660 Overlook Drive
 Broomfield, CO 80027
 COMMUNITY: Sunridge II

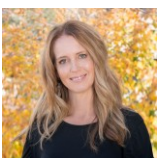
PRICE \$599,000



Single Family
 2186 SQFT
 3 Beds
 3 Baths
 2 Car
 0.13 Acre

PROPERTY DETAILS

Best Location in Broomfield near Boulder County Open Space. Walking distance to shopping, restaurants, trails, and close to HWY access. Inviting front porch with views of open space. Hardwood flooring, vaulted ceilings, and lots of natural light. Family room with built-in cabinet and electric fireplace. Separate dining room and sunroom. Kitchen with granite counters and wood cabinets. Main level primary suite with deck access. 2 additional bedrooms upstairs. Finished basement with media/family room, storage, and laundry. New HVAC and A/C system. Stunning yard with new deck and mature trees. Attached 2 car garage.



Terri Ellerington

303-929-8116

terri@elevated-team.com

<https://www.remax.com/real-estate-agents/terri-ellerington-louisville-co/10205130>

Scan code
 for more
 property
 details



2660 Overlook Drive, Broomfield, CO 80027 – Main Level



TOTAL: 2054 sq. ft
BELOW GROUND: 765 sq. ft, FLOOR 2: 876 sq. ft, FLOOR 3: 413 sq. ft
EXCLUDED AREAS: STORAGE: 47 sq. ft, GARAGE: 381 sq. ft, SCREENED PORCH: 159 sq. ft,
PORCH: 46 sq. ft, DECK: 468 sq. ft, BAY WINDOW: 12 sq. ft,
OPEN TO BELOW: 341 sq. ft

Floor Plan Created By V1photos.com, Measurements Deamed Highly Reliable But Not Guaranteed.



Disclaimer: Sizes and Dimensions are Approximate, Actual May Vary.



Terri Ellerington

303-929-8116

terri@elevated-team.com

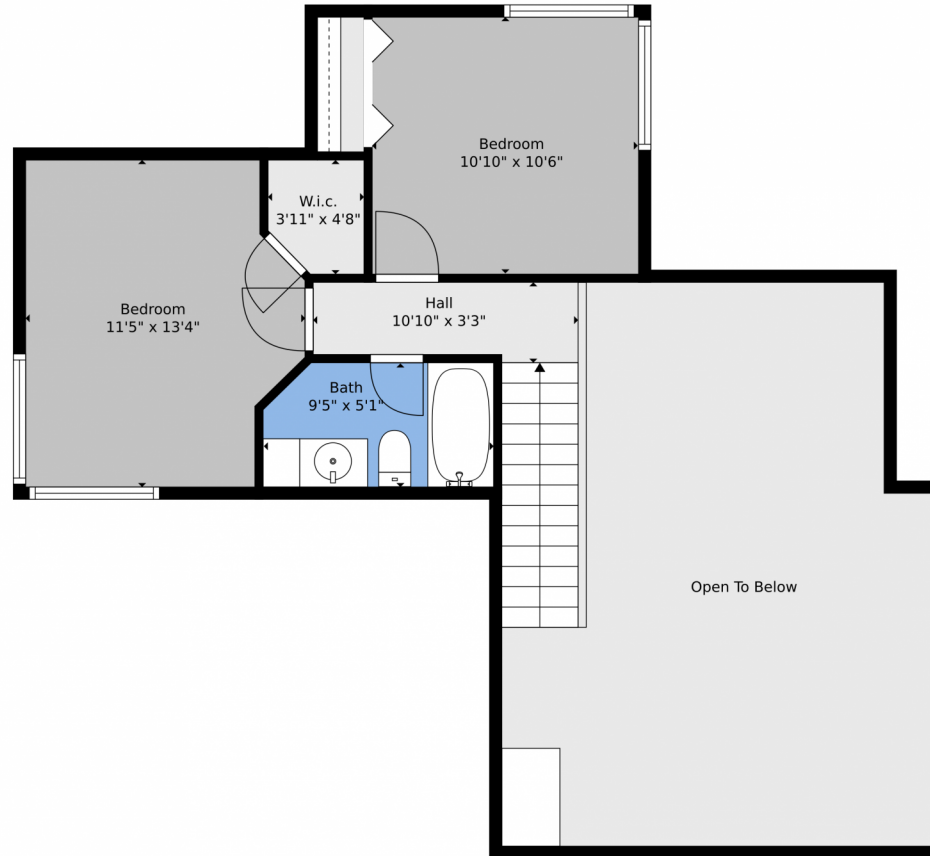
<https://www.remax.com/real-estate-agents/terri-ellerington-louisville-co/102051301>



Scan code
for more
property
details



2660 Overlook Drive, Broomfield, CO 80027 – Upper Level



TOTAL: 2054 sq. ft
BELOW GROUND: 765 sq. ft, FLOOR 2: 876 sq. ft, FLOOR 3: 413 sq. ft
EXCLUDED AREAS: STORAGE: 47 sq. ft, GARAGE: 381 sq. ft, SCREENED PORCH: 159 sq. ft,
PORCH: 46 sq. ft, DECK: 468 sq. ft, BAY WINDOW: 12 sq. ft,
OPEN TO BELOW: 341 sq. ft

Floor Plan Created By V1photos.com, Measurements Deamed Highly Reliable But Not Guaranteed.



Disclaimer: Sizes and Dimensions are Approximate, Actual May Vary.



Terri Ellerington

303-929-8116

terri@elevated-team.com

<https://www.remax.com/real-estate-agents/terri-ellerington-louisville-co/102051301>



Scan code
for more
property
details



2660 Overlook Drive, Broomfield, CO 80027 – Lower Level



TOTAL: 2054 sq. ft
BELOW GROUND: 765 sq. ft, FLOOR 2: 876 sq. ft, FLOOR 3: 413 sq. ft
EXCLUDED AREAS: STORAGE: 47 sq. ft, GARAGE: 381 sq. ft, SCREENED PORCH: 159 sq. ft,
PORCH: 46 sq. ft, DECK: 468 sq. ft, BAY WINDOW: 12 sq. ft,
OPEN TO BELOW: 341 sq. ft

Floor Plan Created By V1photos.com, Measurements Deamed Highly Reliable But Not Guaranteed.



Disclaimer: Sizes and Dimensions are Approximate, Actual May Vary.



Terri Ellerington

303-929-8116

terri@elevated-team.com

<https://www.remax.com/real-estate-agents/terri-ellerington-louisville-co/102051301>



Scan code
for more
property
details



2660 Overlook Drive, Broomfield, CO 80027 – All Levels



Floor 2

Floor 3

Floor 1



TOTAL: 2054 sq. ft
BELOW GROUND: 765 sq. ft, FLOOR 2: 876 sq. ft, FLOOR 3: 413 sq. ft
EXCLUDED AREAS: STORAGE: 47 sq. ft, GARAGE: 381 sq. ft, SCREENED PORCH: 159 sq. ft,
PORCH: 46 sq. ft, DECK: 468 sq. ft, BAY WINDOW: 12 sq. ft,
OPEN TO BELOW: 341 sq. ft

Floor Plan Created By V1photos.com, Measurements Deamed Highly Reliable But Not Guaranteed.



Disclaimer: Sizes and Dimensions are Approximate, Actual May Vary.



Terri Ellerington

303-929-8116

terri@elevated-team.com

<https://www.remax.com/real-estate-agents/terri-ellerington-louisville-co/102051301>



Scan code
for more
property
details

