




floorplan\_single\_1



 Single Family

 2603 SQFT

 3 Beds

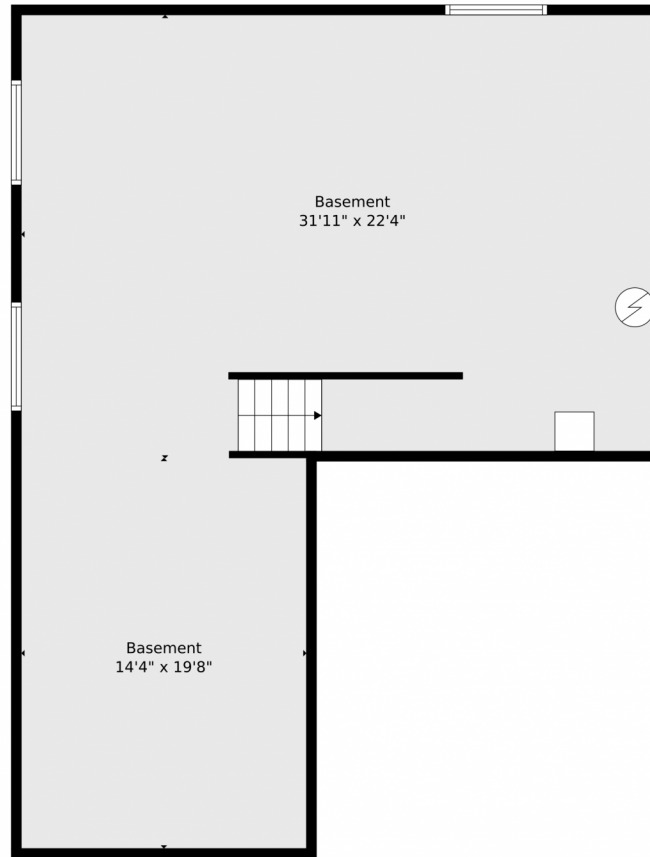
 3 Baths



**Taylor Haas**  
303-665-7368  
taylorh@coloradorpm.com  
<https://www.coloradorpm.com/available-rental-properties-denver>



# 3445 Dinosaur Street, Castle Rock, CO 80109 – Lower Level



**TOTAL: 2434 sq. ft**  
BELOW GROUND: 0 sq. ft, FLOOR 2: 1069 sq. ft, FLOOR 3: 1365 sq. ft  
EXCLUDED AREAS: BASEMENT: 989 sq. ft, GARAGE: 332 sq. ft, COVERED PATIO: 142 sq. ft,  
PORCH: 52 sq. ft

Floor Plan Created By V1photos.com, Measurements Deamed Highly Reliable But Not Guaranteed.



Disclaimer: Sizes and Dimensions are Approximate, Actual May Vary.



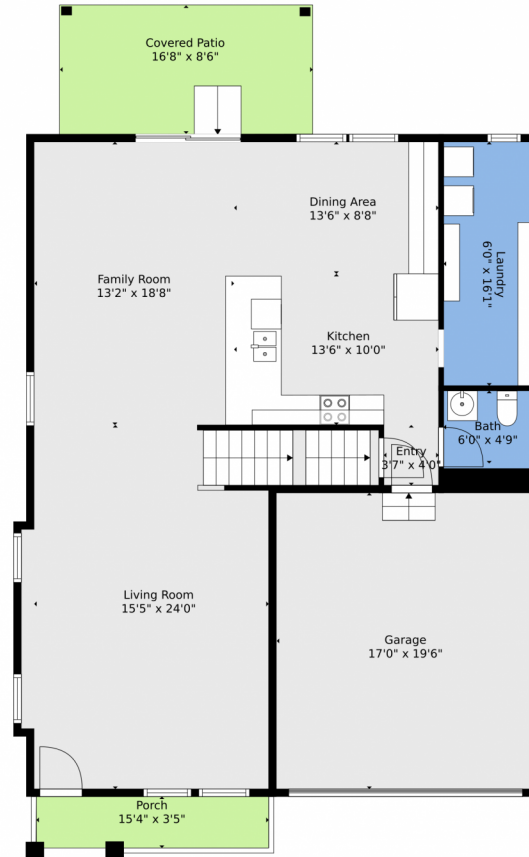
**Taylor Haas**  
303-665-7368  
taylorh@coloradorpm.com  
<https://www.coloradorpm.com/available-rental-properties-denver>



Scan code  
for more  
property  
details



# 3445 Dinosaur Street, Castle Rock, CO 80109 – Main Level



**TOTAL: 2434 sq. ft**  
BELOW GROUND: 0 sq. ft, FLOOR 2: 1069 sq. ft, FLOOR 3: 1365 sq. ft  
EXCLUDED AREAS: BASEMENT: 989 sq. ft, GARAGE: 332 sq. ft, COVERED PATIO: 142 sq. ft,  
PORCH: 52 sq. ft

Floor Plan Created By V1photos.com. Measurements Deamed Highly Reliable But Not Guaranteed.



Disclaimer: Sizes and Dimensions are Approximate, Actual May Vary.



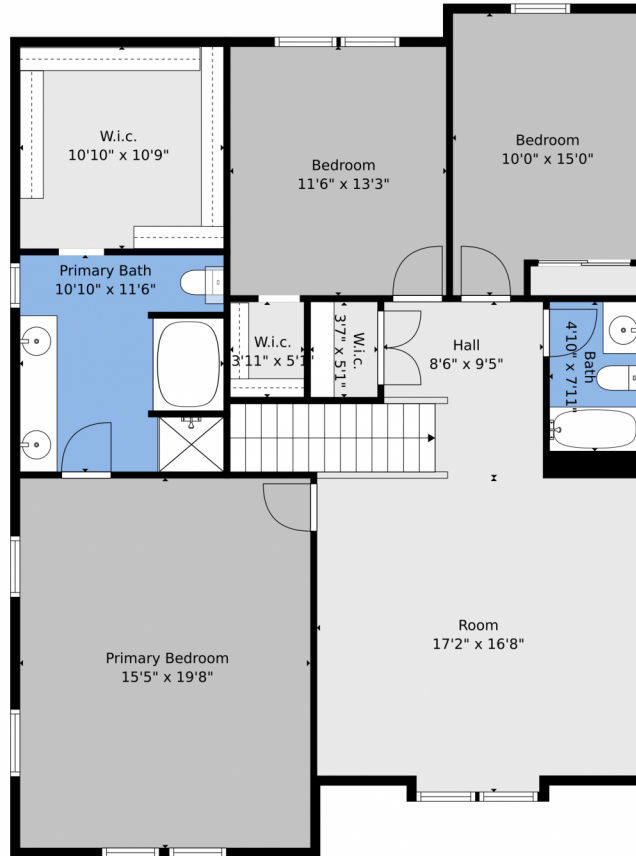
**Taylor Haas**  
303-665-7368  
taylorh@coloradorpm.com  
<https://www.coloradorpm.com/available-rental-properties-denver>



Scan code  
for more  
property  
details



3445 Dinosaur Street, Castle Rock, CO 80109 – Upper Level



**TOTAL: 2434 sq. ft**  
BELOW GROUND: 0 sq. ft, FLOOR 2: 1069 sq. ft, FLOOR 3: 1365 sq. ft  
EXCLUDED AREAS: BASEMENT: 989 sq. ft, GARAGE: 332 sq. ft, COVERED PATIO: 142 sq. ft,  
PORCH: 52 sq. ft

Floor Plan Created By V1photos.com, Measurements Deamed Highly Reliable But Not Guaranteed.



Disclaimer: Sizes and Dimensions are Approximate, Actual May Vary.



**Taylor Haas**  
303-665-7368  
taylorh@coloradorpm.com  
<https://www.coloradorpm.com/available-rental-properties-denver>



Scan code  
for more  
property  
details





# 3445 Dinosaur Street, Castle Rock, CO 80109 – All Levels



**TOTAL: 2434 sq. ft**  
 BELOW GROUND: 0 sq. ft, FLOOR 2: 1069 sq. ft, FLOOR 3: 1365 sq. ft  
 EXCLUDED AREAS: BASEMENT: 989 sq. ft, GARAGE: 332 sq. ft, COVERED PATIO: 142 sq. ft,  
 PORCH: 52 sq. ft

Floor Plan Created By V1photos.com, Measurements Deamed Highly Reliable But Not Guaranteed.



Disclaimer: Sizes and Dimensions are Approximate, Actual May Vary.



**Taylor Haas**  
 303-665-7368  
 taylorh@coloradorpm.com  
<https://www.coloradorpm.com/available-rental-properties-denver>



Scan code  
 for more  
 property  
 details

