
 Single Family

 1651 SQFT

 3 Beds

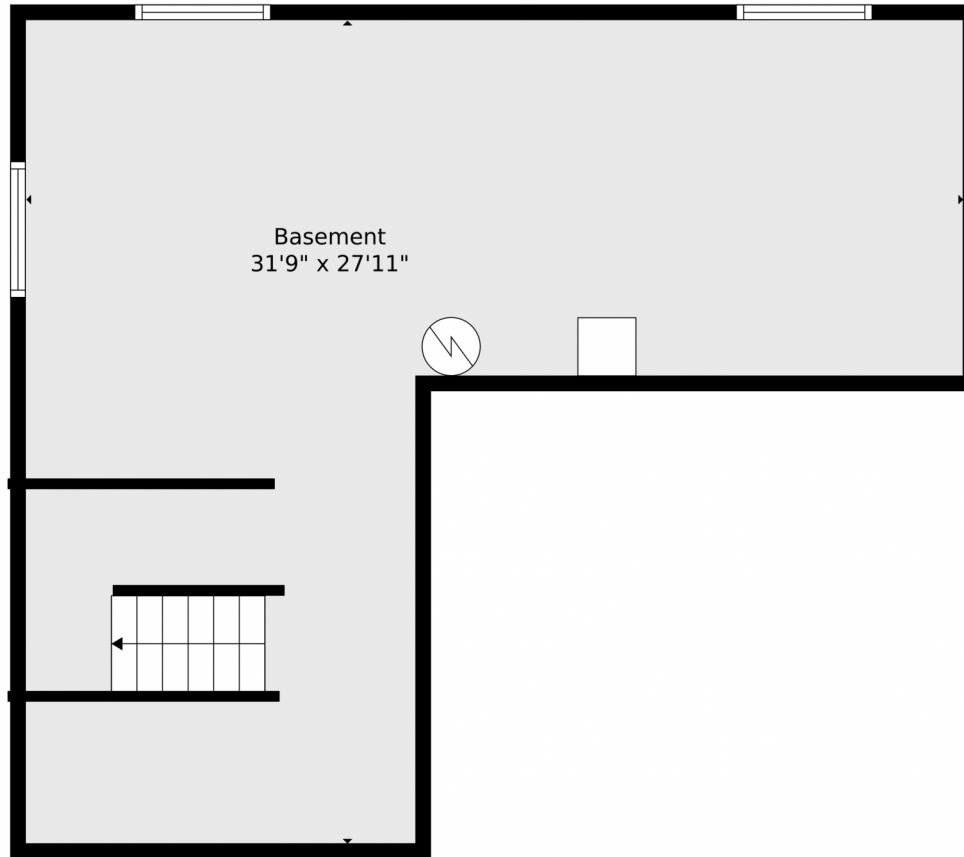
 2/1 Baths



**Taylor Haas**  
303-665-7368  
taylorh@coloradorpm.com  
<https://www.coloradorpm.com/available-rental-properties-denver>



2992 Namib Drive, Colorado Springs, CO 80922 – Lower Level



**TOTAL: 1507 sq. ft**  
BELOW GROUND: 0 sq. ft, FLOOR 2: 634 sq. ft, FLOOR 3: 873 sq. ft  
EXCLUDED AREAS: BASEMENT: 595 sq. ft, GARAGE: 361 sq. ft, PATIO: 316 sq. ft,  
DECK: 79 sq. ft

Floor Plan Created By V1photos.com. Measurements Deamed Highly Reliable But Not Guaranteed.



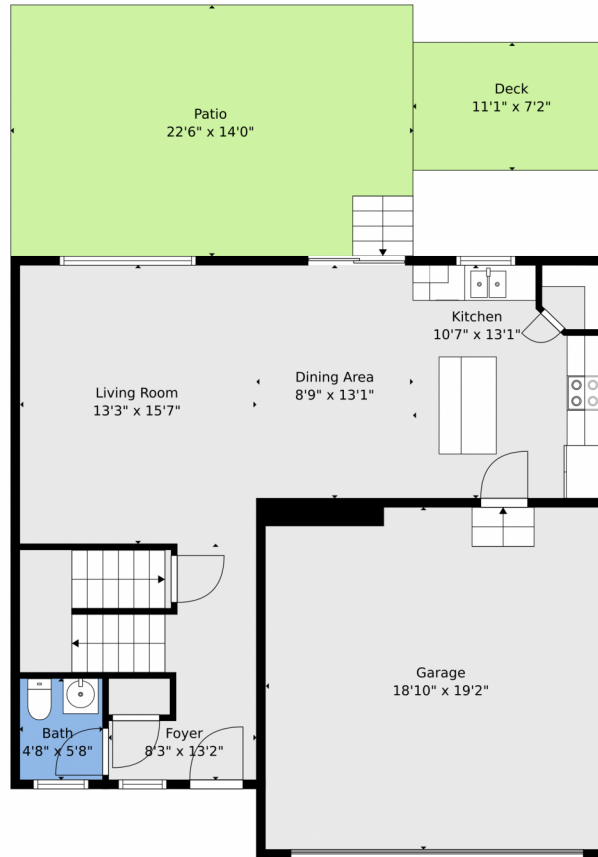
Disclaimer: Sizes and Dimensions are Approximate, Actual May Vary.



**Taylor Haas**  
303-665-7368  
taylorh@coloradorpm.com  
<https://www.coloradorpm.com/available-rental-properties-denver>



# 2992 Namib Drive, Colorado Springs, CO 80922 – Main Level



**TOTAL: 1507 sq. ft**  
BELOW GROUND: 0 sq. ft, FLOOR 2: 634 sq. ft, FLOOR 3: 873 sq. ft  
EXCLUDED AREAS: BASEMENT: 595 sq. ft, GARAGE: 361 sq. ft, PATIO: 316 sq. ft,  
DECK: 79 sq. ft

Floor Plan Created By V1photos.com, Measurements Deamed Highly Reliable But Not Guaranteed.



Disclaimer: Sizes and Dimensions are Approximate, Actual May Vary.



**Taylor Haas**  
303-665-7368  
taylorh@coloradorpm.com  
<https://www.coloradorpm.com/available-rental-properties-denver>



# 2992 Namib Drive, Colorado Springs, CO 80922 – Upper Level



**TOTAL: 1507 sq. ft**  
BELOW GROUND: 0 sq. ft, FLOOR 2: 634 sq. ft, FLOOR 3: 873 sq. ft  
EXCLUDED AREAS: BASEMENT: 595 sq. ft, GARAGE: 361 sq. ft, PATIO: 316 sq. ft,  
DECK: 79 sq. ft

Floor Plan Created By V1photos.com, Measurements Deamed Highly Reliable But Not Guaranteed.



Disclaimer: Sizes and Dimensions are Approximate, Actual May Vary.



**Taylor Haas**

303-665-7368

taylorh@coloradorpm.com

<https://www.coloradorpm.com/available-rental-properties-denver>



Scan code  
for more  
property  
details



# 2992 Namib Drive, Colorado Springs, CO 80922 – All Levels



**TOTAL: 1507 sq. ft**  
BELOW GROUND: 0 sq. ft, FLOOR 2: 634 sq. ft, FLOOR 3: 873 sq. ft  
EXCLUDED AREAS: BASEMENT: 595 sq. ft, GARAGE: 361 sq. ft, PATIO: 316 sq. ft,  
DECK: 79 sq. ft

Floor Plan Created By V1photos.com, Measurements Deamed Highly Reliable But Not Guaranteed.



Disclaimer: Sizes and Dimensions are Approximate, Actual May Vary.



**Taylor Haas**  
303-665-7368  
taylorh@coloradorpm.com  
<https://www.coloradorpm.com/available-rental-properties-denver>



Scan code  
for more  
property  
details

