



33985 Lake View Drive
Pine, CO 80470



 Single Family  4900 SQFT



Kim Poffenbarger
303-548-5084
kimpoff@me.com



33985 Lake View Drive, Pine, CO 80470 – Lower Level



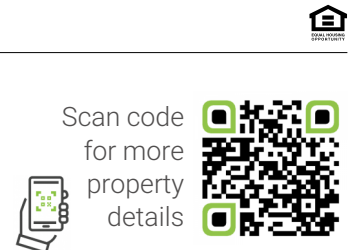
TOTAL: 4074 sq. ft
BELOW GROUND: 1535 sq. ft, FLOOR 2: 1661 sq. ft, FLOOR 3: 878 sq. ft, FLOOR 4: 0 sq. ft
EXCLUDED AREAS: ELECTRICAL ROOM: 77 sq. ft, DECK: 1105 sq. ft, PATIO: 173 sq. ft,
BALCONY: 140 sq. ft, PORCH: 71 sq. ft, LOW CEILING: 439 sq. ft,
OPEN TO BELOW: 541 sq. ft, GARAGE: 1005 sq. ft

Floor Plan Created By V1photos.com, Measurements Deamed Highly Reliable But Not Guaranteed.



Disclaimer: Sizes and Dimensions are Approximate, Actual May Vary.

Kim Poffenbarger
303-548-5084
kimpoff@me.com



33985 Lake View Drive, Pine, CO 80470 – Main Level



TOTAL: 4074 sq. ft
BELOW GROUND: 1535 sq. ft, FLOOR 2: 1661 sq. ft, FLOOR 3: 878 sq. ft, FLOOR 4: 0 sq. ft
EXCLUDED AREAS: ELECTRICAL ROOM: 77 sq. ft, DECK: 1105 sq. ft, PATIO: 173 sq. ft,
BALCONY: 140 sq. ft, PORCH: 71 sq. ft, LOW CEILING: 439 sq. ft,
OPEN TO BELOW: 541 sq. ft, GARAGE: 1005 sq. ft

Floor Plan Created By V1photos.com, Measurements Deamed Highly Reliable But Not Guaranteed.



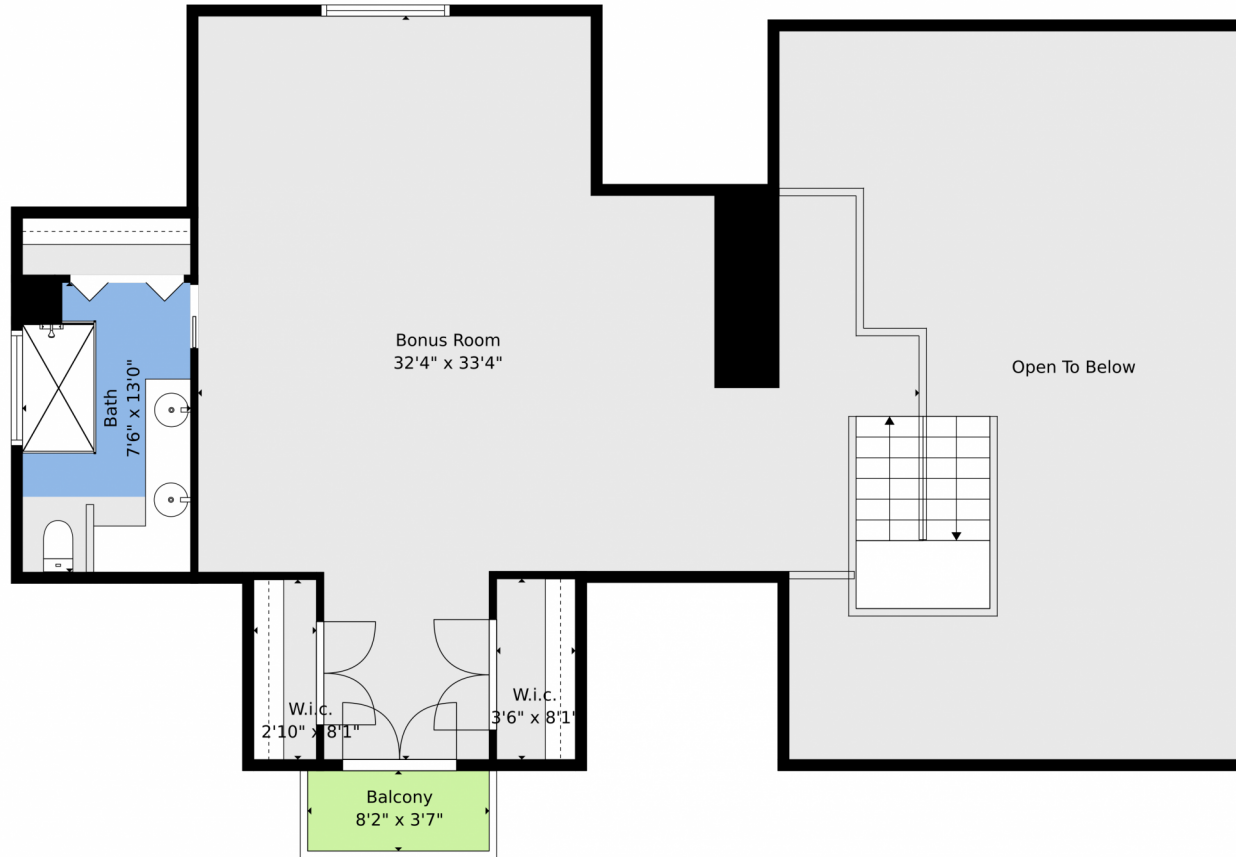
Disclaimer: Sizes and Dimensions are Approximate, Actual May Vary.

Kim Poffenbarger
303-548-5084
kimpoff@me.com

Scan code
for more
property
details



33985 Lake View Drive, Pine, CO 80470 – Second Level



TOTAL: 4074 sq. ft
BELOW GROUND: 1535 sq. ft, FLOOR 2: 1661 sq. ft, FLOOR 3: 878 sq. ft, FLOOR 4: 0 sq. ft
EXCLUDED AREAS: ELECTRICAL ROOM: 77 sq. ft, DECK: 1105 sq. ft, PATIO: 173 sq. ft,
BALCONY: 140 sq. ft, PORCH: 71 sq. ft, LOW CEILING: 439 sq. ft,
OPEN TO BELOW: 541 sq. ft, GARAGE: 1005 sq. ft

Floor Plan Created By V1photos.com, Measurements Deamed Highly Reliable But Not Guaranteed.

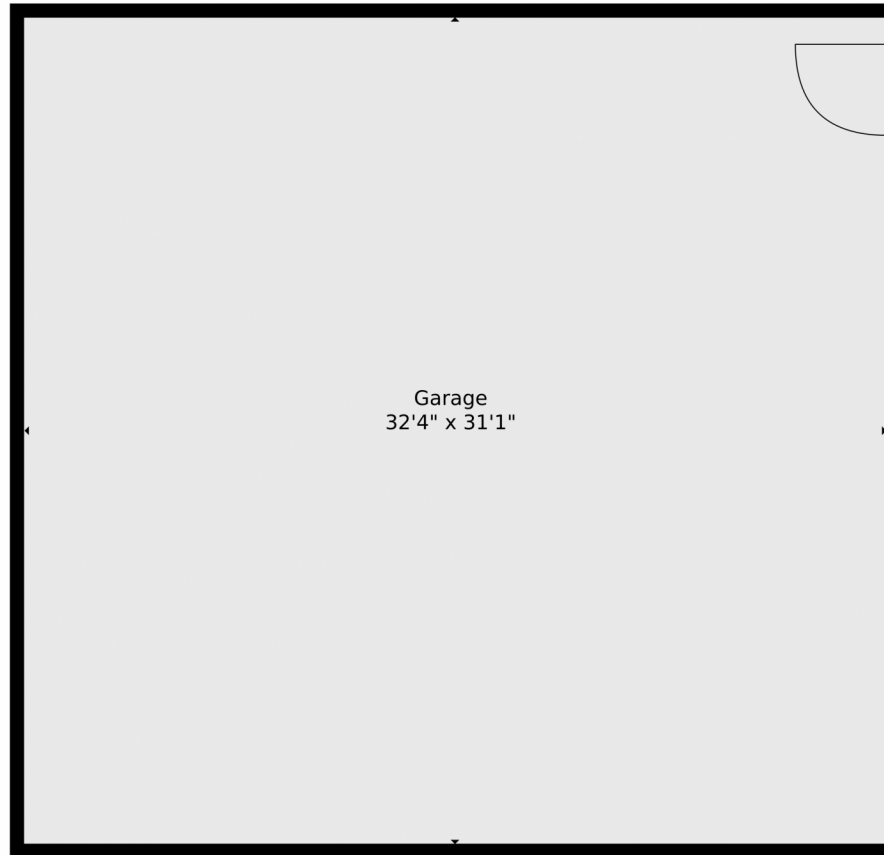


Disclaimer: Sizes and Dimensions are Approximate, Actual May Vary.

Kim Poffenbarger
303-548-5084
kimpoff@me.com



Scan code
for more
property
details



TOTAL: 4074 sq. ft
BELOW GROUND: 1535 sq. ft, FLOOR 2: 1661 sq. ft, FLOOR 3: 878 sq. ft, FLOOR 4: 0 sq. ft
EXCLUDED AREAS: ELECTRICAL ROOM: 77 sq. ft, DECK: 1105 sq. ft, PATIO: 173 sq. ft,
BALCONY: 140 sq. ft, PORCH: 71 sq. ft, LOW CEILING: 439 sq. ft,
OPEN TO BELOW: 541 sq. ft, GARAGE: 1005 sq. ft

Floor Plan Created By V1photos.com. Measurements Deamed Highly Reliable But Not Guaranteed.



Disclaimer: Sizes and Dimensions are Approximate, Actual May Vary.

Kim Poffenbarger
303-548-5084
kimpoff@me.com



33985 Lake View Drive, Pine, CO 80470 – All Levels



TOTAL: 4074 sq. ft
 BELOW GROUND: 1535 sq. ft, FLOOR 2: 1661 sq. ft, FLOOR 3: 878 sq. ft, FLOOR 4: 0 sq. ft
 EXCLUDED AREAS: ELECTRICAL ROOM: 77 sq. ft, DECK: 1105 sq. ft, PATIO: 173 sq. ft,
 BALCONY: 140 sq. ft, PORCH: 71 sq. ft, LOW CEILING: 439 sq. ft,
 OPEN TO BELOW: 541 sq. ft, GARAGE: 1005 sq. ft

Floor Plan Created By V1photos.com. Measurements Deamed Highly Reliable But Not Guaranteed.



Disclaimer: Sizes and Dimensions are Approximate, Actual May Vary.

Kim Poffenbarger
 303-548-5084
 kimpoff@me.com

