



1345 South Jay Street
Lakewood, CO 80232



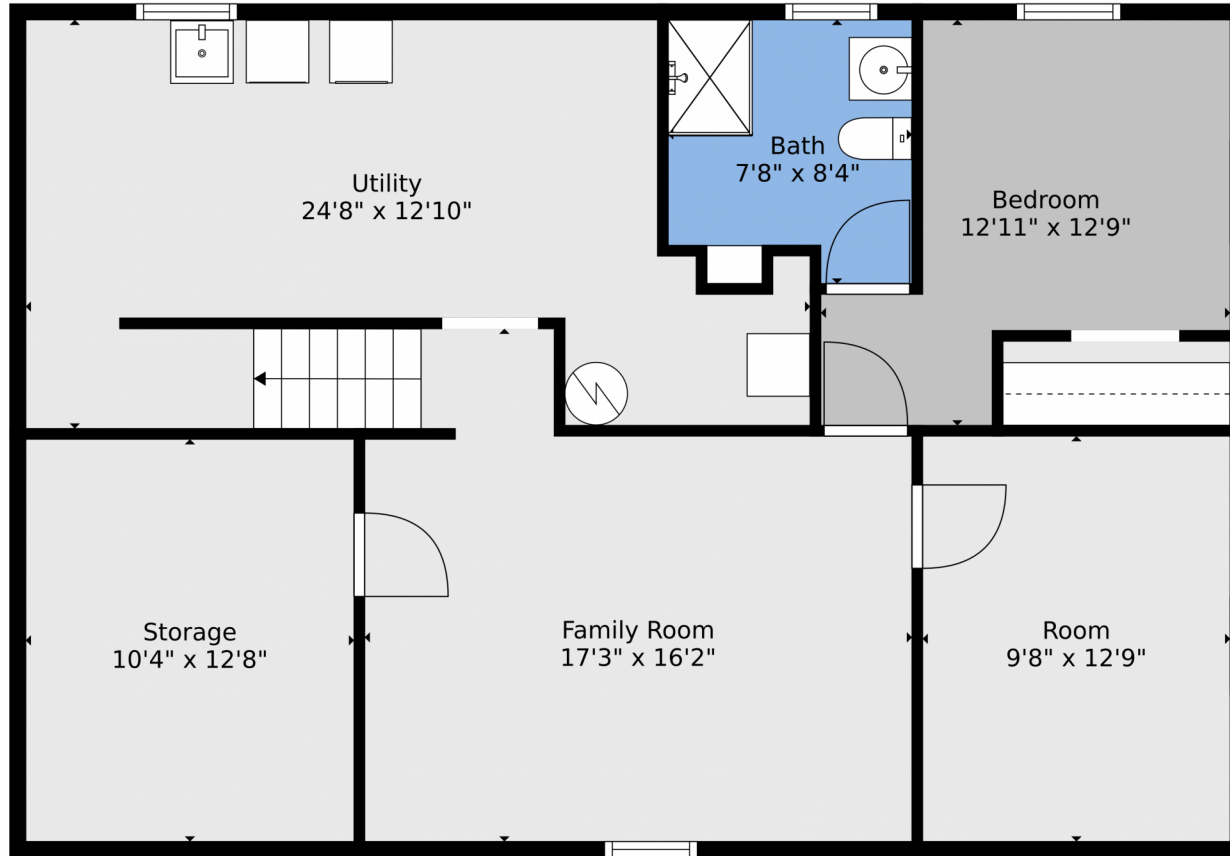
 Single Family  1092 SQFT



Danielle Marcus
303-669-7974
danielle@themarcusteam.com
<https://www.themarcusteam.com>



1345 South Jay Street, Lakewood, CO 80232 – Lower Level



TOTAL: 1566 sq. ft
BELOW GROUND: 584 sq. ft, FLOOR 2: 982 sq. ft
EXCLUDED AREAS: STORAGE: 134 sq. ft, UTILITY: 262 sq. ft, GARAGE: 193 sq. ft,
PORCH: 84 sq. ft, DECK: 230 sq. ft, PATIO: 148 sq. ft,
COVERED PATIO: 88 sq. ft

Floor Plan Created By V1photos.com. Measurements Deamed Highly Reliable But Not Guaranteed.



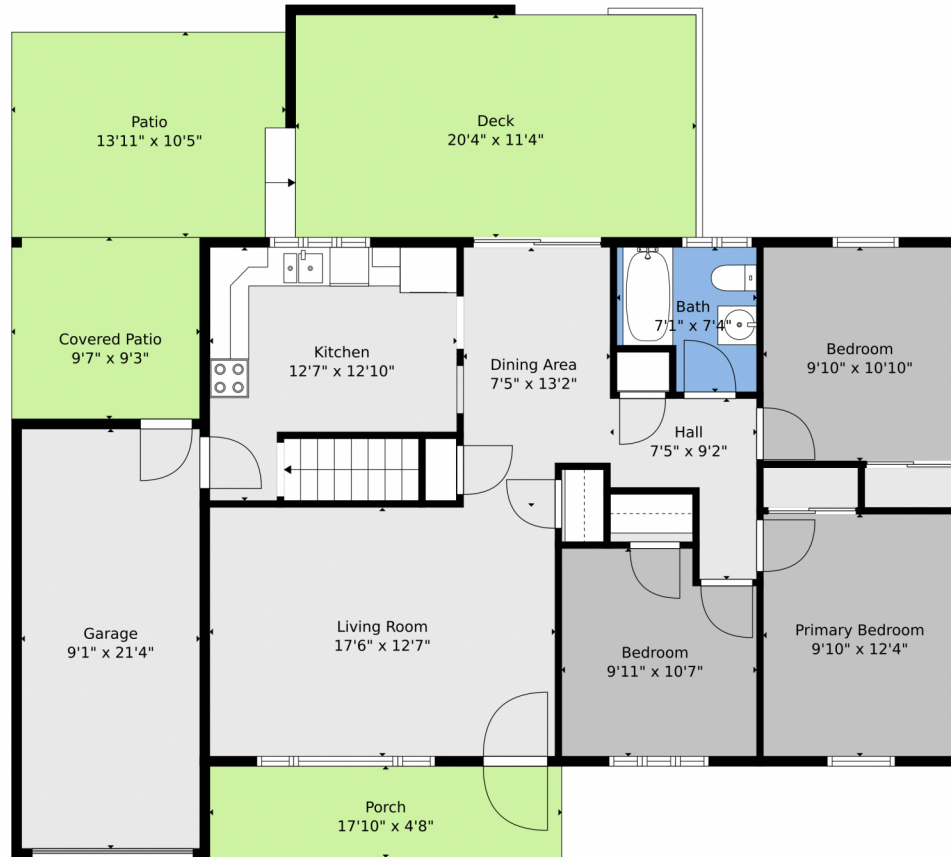
Disclaimer: Sizes and Dimensions are Approximate, Actual May Vary.



Danielle Marcus
303-669-7974
danielle@themarkusteam.com
<https://www.themarkusteam.com>



1345 South Jay Street, Lakewood, CO 80232 – Main Level



TOTAL: 1566 sq. ft
BELOW GROUND: 584 sq. ft, FLOOR 2: 982 sq. ft
EXCLUDED AREAS: STORAGE: 134 sq. ft, UTILITY: 262 sq. ft, GARAGE: 193 sq. ft,
PORCH: 84 sq. ft, DECK: 230 sq. ft, PATIO: 148 sq. ft,
COVERED PATIO: 88 sq. ft

Floor Plan Created By V1photos.com. Measurements Deamed Highly Reliable But Not Guaranteed.



Disclaimer: Sizes and Dimensions are Approximate, Actual May Vary.

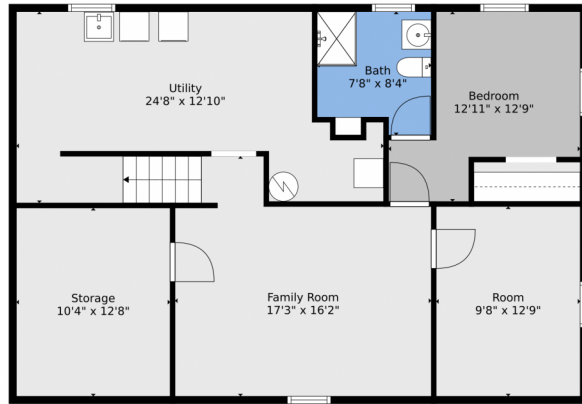


Danielle Marcus
303-669-7974
danielle@themarkusteam.com
<https://www.themarkusteam.com>

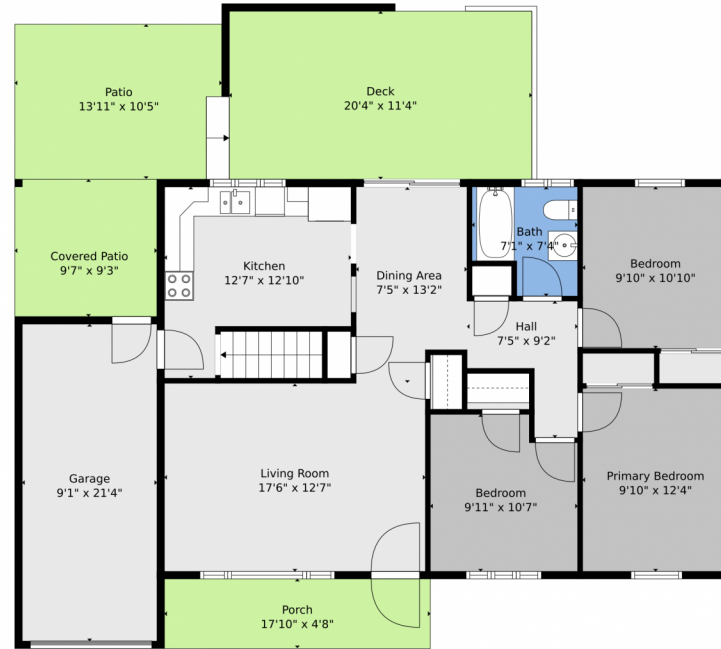


Scan code
for more
property
details

1345 South Jay Street, Lakewood, CO 80232 – All Levels



Floor 1



Floor 2



TOTAL: 1566 sq. ft
BELOW GROUND: 584 sq. ft, FLOOR 2: 982 sq. ft
EXCLUDED AREAS: STORAGE: 134 sq. ft, UTILITY: 262 sq. ft, GARAGE: 193 sq. ft,
PORCH: 84 sq. ft, DECK: 230 sq. ft, PATIO: 148 sq. ft,
COVERED PATIO: 88 sq. ft

Floor Plan Created By V1photos.com, Measurements Deamed Highly Reliable But Not Guaranteed.



Disclaimer: Sizes and Dimensions are Approximate, Actual May Vary.



Danielle Marcus
303-669-7974
danielle@themarkusteam.com
<https://www.themarkusteam.com>

