



671 Elati Street
 Denver, CO 80204
 COMMUNITY: Lincoln Park

PRICE \$1,350,000

The Home of your dream awaits!



Single Family 2793 SQFT 2 Beds 2/1 Baths 2 Car

PROPERTY DETAILS

Welcome to this stunning property in Denver's Lincoln Park community. This single family home offers 2 bedrooms, 2 full bathrooms, and 1 half bathroom with a total of 2793 sqft of living space. It features a 2-car parking garage and a studio above the garage with private entrances. The unfurnished living room has beautiful hardwood flooring and plenty of natural light. The kitchen is a chef's dream with high-end appliances and elegant countertops. The primary bedroom is a tranquil retreat with a vaulted beam ceiling and a walk-in closet. Outside, there is a mahogany deck, patio, and fenced yard for outdoor entertaining. This property is conveniently located near shops, restaurants, and parks. Don't miss out on this exceptional luxury living opportunity.

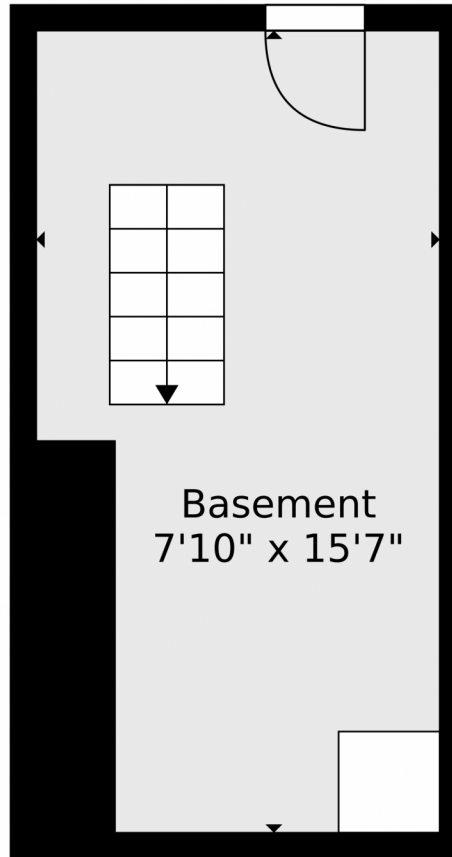


stephanie garcia
 720-988-9377
 s.maygarcia90@gmail.com



Scan code
 for more
 property
 details





Basement
7'10" x 15'7"

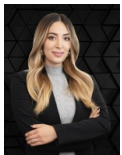


TOTAL: 2164 sq. ft
BELOW GROUND: 0 sq. ft, FLOOR 2: 1017 sq. ft, FLOOR 3: 1147 sq. ft
EXCLUDED AREAS: BASEMENT: 123 sq. ft, PORCH: 81 sq. ft, PATIO: 223 sq. ft,
GARAGE: 255 sq. ft, LOW CEILING: 132 sq. ft, BALCONY: 180 sq. ft,
OPEN TO BELOW: 30 sq. ft

Floor Plan Created By V1photos.com. Measurements Deamed Highly Reliable But Not Guaranteed.



Disclaimer: Sizes and Dimensions are Approximate, Actual May Vary.



stephanie garcia
720-988-9377
s.maygarcia90@gmail.com



Scan code
for more
property
details

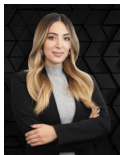


TOTAL: 2164 sq. ft
BELOW GROUND: 0 sq. ft, FLOOR 2: 1017 sq. ft, FLOOR 3: 1147 sq. ft
EXCLUDED AREAS: BASEMENT: 123 sq. ft, PORCH: 81 sq. ft, PATIO: 223 sq. ft,
GARAGE: 255 sq. ft, LOW CEILING: 132 sq. ft, BALCONY: 180 sq. ft,
OPEN TO BELOW: 30 sq. ft

Floor Plan Created By V1photos.com, Measurements Deamed Highly Reliable But Not Guaranteed.



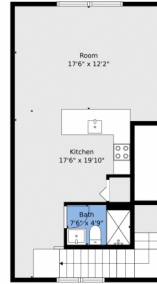
Disclaimer: Sizes and Dimensions are Approximate, Actual May Vary.



stephanie garcia
720-988-9377
s.maygarcia90@gmail.com



Scan code
for more
property
details



TOTAL: 2164 sq. ft
BELOW GROUND: 0 sq. ft, FLOOR 2: 1017 sq. ft, FLOOR 3: 1147 sq. ft
EXCLUDED AREAS: BASEMENT: 123 sq. ft, PORCH: 81 sq. ft, PATIO: 223 sq. ft,
GARAGE: 255 sq. ft, LOW CEILING: 132 sq. ft, BALCONY: 180 sq. ft,
OPEN TO BELOW: 30 sq. ft

Floor Plan Created By V1photos.com, Measurements Deamed Highly Reliable But Not Guaranteed.



Disclaimer: Sizes and Dimensions are Approximate, Actual May Vary.



stephanie garcia
720-988-9377
s.maygarcia90@gmail.com



Scan code
for more
property
details

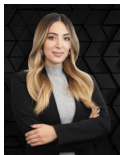


TOTAL: 2164 sq. ft
BELOW GROUND: 0 sq. ft, FLOOR 2: 1017 sq. ft, FLOOR 3: 1147 sq. ft
EXCLUDED AREAS: BASEMENT: 123 sq. ft, PORCH: 81 sq. ft, PATIO: 223 sq. ft,
GARAGE: 255 sq. ft, LOW CEILING: 132 sq. ft, BALCONY: 180 sq. ft,
OPEN TO BELOW: 30 sq. ft

Floor Plan Created By V1photos.com, Measurements Deamed Highly Reliable But Not Guaranteed.



Disclaimer: Sizes and Dimensions are Approximate, Actual May Vary.



stephanie garcia
720-988-9377
s.maygarcia90@gmail.com

