



Condominium



1547 SQFT



2 Beds



2/1 Baths



1 Car

PROPERTY DETAILS

Welcome to this updated luxury condo in North Evergreen. This corner unit has plenty of windows, a charming outdoor area, and a private outdoor living space. The main floor features wide plank flooring, modern light fixtures, and an updated kitchen with granite counters and new appliances. The dining area and living room have a gas fireplace and a remodeled TV wall. Upstairs, there is a guest room with a full bath and a spacious primary suite with a walk-in closet and ensuite bathroom. The lower level has a finished garage space and a mudroom-style entry. The HOA takes care of exterior maintenance and utilities. This home is located near shopping, restaurants, and outdoor activities. It offers easy access to Interstate 70 for commuting and skiing. Don't miss out on this stylish and comfortable condo in Evergreen!



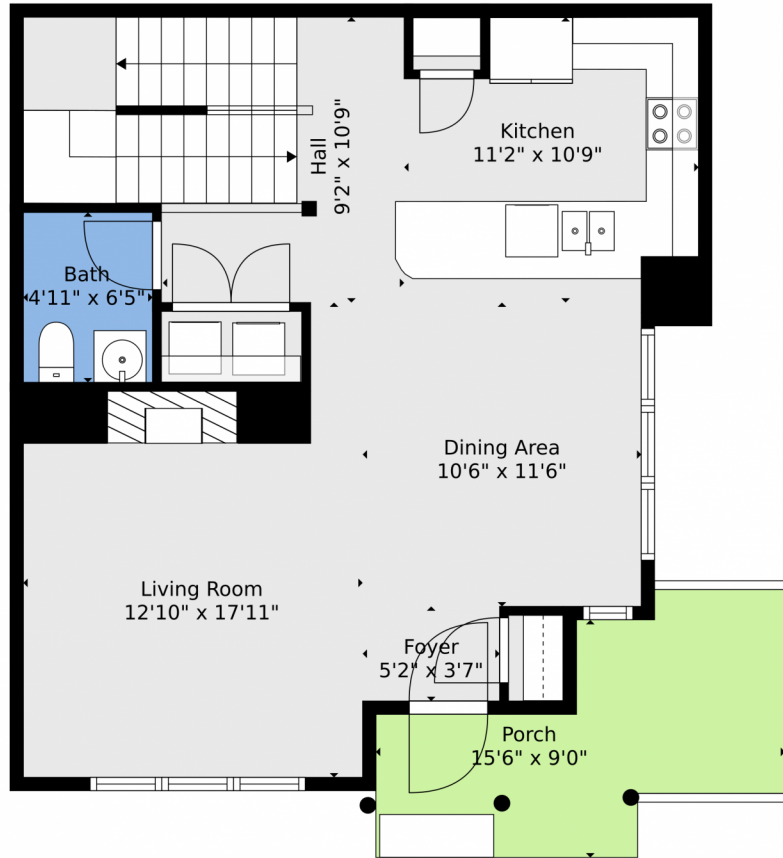
Pandora & John Erlandson
303-888-6298
pandora@pandorajohnproperties.com
<https://www.pandorajohnproperties.com>



Scan code
for more
property
details



31112 Black Eagle Drive, Evergreen, CO 80439 – Main



TOTAL: 1455 sq. ft
BELOW GROUND: 122 sq. ft, FLOOR 2: 655 sq. ft, FLOOR 3: 678 sq. ft
EXCLUDED AREAS: ELECTRICAL ROOM: 57 sq. ft, GARAGE: 225 sq. ft, PORCH: 104 sq. ft
Floor Plan Created By V1photos.com, Measurements Deamed Highly Reliable But Not Guaranteed.

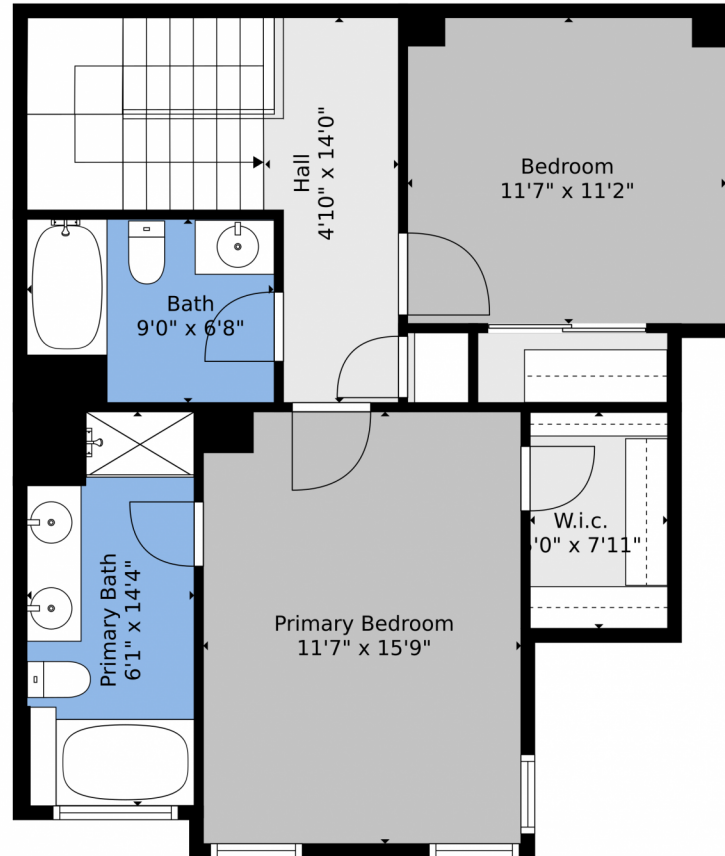


Disclaimer: Sizes and Dimensions are Approximate, Actual May Vary.



Pandora & John Erlandson
303-888-6298
pandora@pandorajohnproperties.com
<https://www.pandorajohnproperties.com>





TOTAL: 1455 sq. ft
BELOW GROUND: 122 sq. ft, FLOOR 2: 655 sq. ft, FLOOR 3: 678 sq. ft
EXCLUDED AREAS: ELECTRICAL ROOM: 57 sq. ft, GARAGE: 225 sq. ft, PORCH: 104 sq. ft
Floor Plan Created By V1photos.com, Measurements Deamed Highly Reliable But Not Guaranteed.



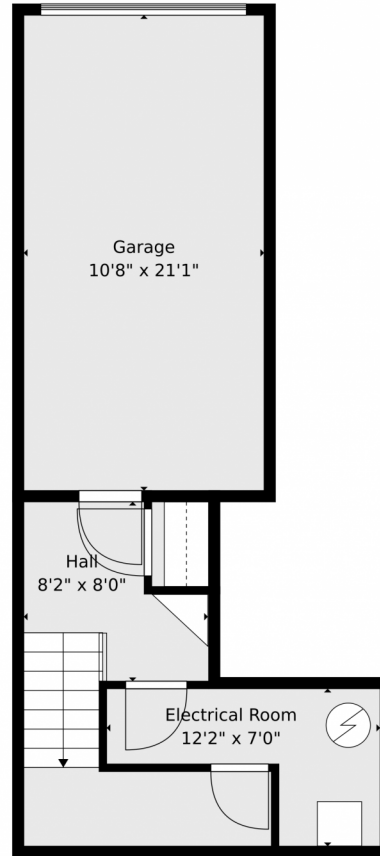
Disclaimer: Sizes and Dimensions are Approximate, Actual May Vary.



Pandora & John Erlandson
303-888-6298
pandora@pandorajohnproperties.com
<https://www.pandorajohnproperties.com>



31112 Black Eagle Drive, Evergreen, CO 80439 – Lower Level



TOTAL: 1455 sq. ft
BELOW GROUND: 122 sq. ft, FLOOR 2: 655 sq. ft, FLOOR 3: 678 sq. ft
EXCLUDED AREAS: ELECTRICAL ROOM: 57 sq. ft, GARAGE: 225 sq. ft, PORCH: 104 sq. ft
Floor Plan Created By V1photos.com, Measurements Deamed Highly Reliable But Not Guaranteed.



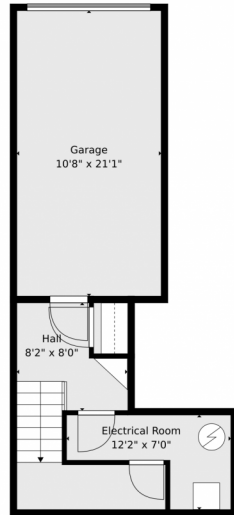
Disclaimer: Sizes and Dimensions are Approximate, Actual May Vary.



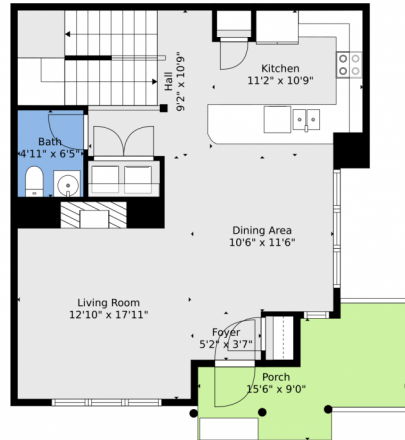
Pandora & John Erlandson
303-888-6298
pandora@pandorajohnproperties.com
<https://www.pandorajohnproperties.com>



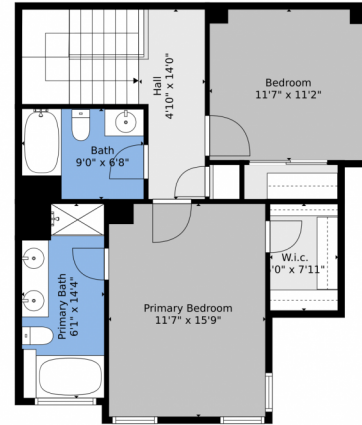
31112 Black Eagle Drive, Evergreen, CO 80439 – All Levels



Floor 1



Floor 2



Floor 3



TOTAL: 1455 sq. ft
BELOW GROUND: 122 sq. ft, FLOOR 2: 655 sq. ft, FLOOR 3: 678 sq. ft
EXCLUDED AREAS: ELECTRICAL ROOM: 57 sq. ft, GARAGE: 225 sq. ft, PORCH: 104 sq. ft

Floor Plan Created By V1photos.com. Measurements Deamed Highly Reliable But Not Guaranteed.



Disclaimer: Sizes and Dimensions are Approximate, Actual May Vary.



Pandora & John Erlandson
303-888-6298
pandora@pandorajohnproperties.com
<https://www.pandorajohnproperties.com>



Scan code
for more
property
details