




421 Ash Street
 Kersey, CO 80644
 COMMUNITY: Berryman Farms



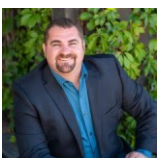
 Single Family

 2500 SQFT

 3 Beds

 3 Baths

 2 Car



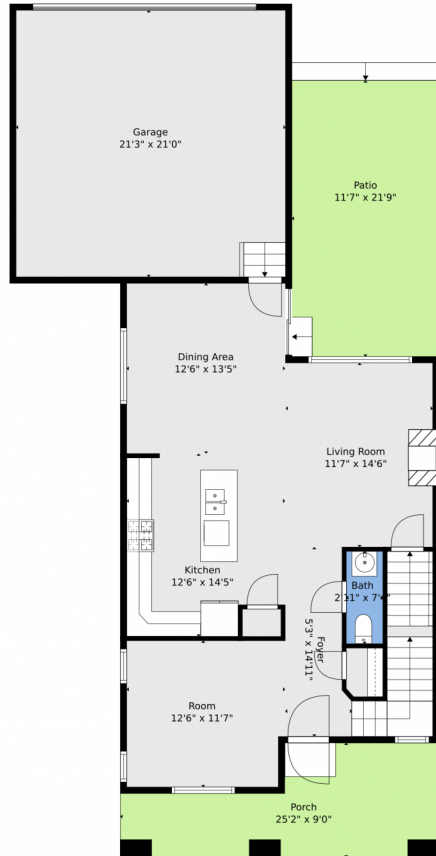
Brad Inhulsen
 970-584-4144
 brad@searsrealestate.com



Scan code
 for more
 property
 details



421 Ash Street, Kersey, CO 80644 – Main Level



TOTAL: 1713 sq. ft
BELOW GROUND: 0 sq. ft, FLOOR 2: 841 sq. ft, FLOOR 3: 872 sq. ft
EXCLUDED AREAS: BASEMENT: 802 sq. ft, GARAGE: 447 sq. ft, PATIO: 253 sq. ft,
PORCH: 176 sq. ft, FIREPLACE: 8 sq. ft

Floor Plan Created By V1photos.com, Measurements Deamed Highly Reliable But Not Guaranteed.



Disclaimer: Sizes and Dimensions are Approximate, Actual May Vary.



Brad Inhulsen
970-584-4144
brad@searsrealestate.com



Scan code
for more
property
details



TOTAL: 1713 sq. ft
BELOW GROUND: 0 sq. ft, FLOOR 2: 841 sq. ft, FLOOR 3: 872 sq. ft
EXCLUDED AREAS: BASEMENT: 802 sq. ft, GARAGE: 447 sq. ft, PATIO: 253 sq. ft,
PORCH: 176 sq. ft, FIREPLACE: 8 sq. ft

Floor Plan Created By V1photos.com, Measurements Deamed Highly Reliable But Not Guaranteed.



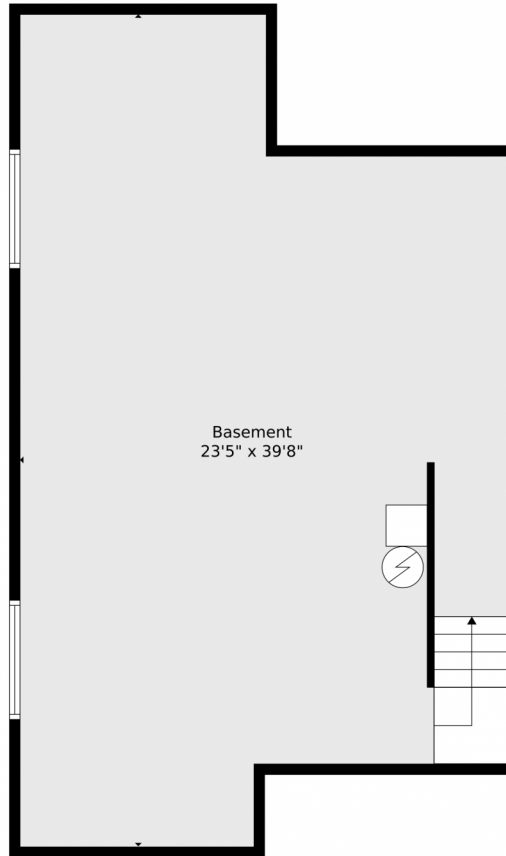
Disclaimer: Sizes and Dimensions are Approximate, Actual May Vary.



Brad Inhulsen
970-584-4144
brad@searsrealestate.com



Scan code
for more
property
details



TOTAL: 1713 sq. ft
BELOW GROUND: 0 sq. ft, FLOOR 2: 841 sq. ft, FLOOR 3: 872 sq. ft
EXCLUDED AREAS: BASEMENT: 802 sq. ft, GARAGE: 447 sq. ft, PATIO: 253 sq. ft,
PORCH: 176 sq. ft, FIREPLACE: 8 sq. ft

Floor Plan Created By V1photos.com, Measurements Deamed Highly Reliable But Not Guaranteed.



Disclaimer: Sizes and Dimensions are Approximate, Actual May Vary.



Brad Inhulsen
970-584-4144
brad@searsrealestate.com



421 Ash Street, Kersey, CO 80644 – All Levels



TOTAL: 1713 sq. ft
BELOW GROUND: 0 sq. ft, FLOOR 2: 841 sq. ft, FLOOR 3: 872 sq. ft
EXCLUDED AREAS: BASEMENT: 802 sq. ft, GARAGE: 447 sq. ft, PATIO: 253 sq. ft,
PORCH: 176 sq. ft, FIREPLACE: 8 sq. ft

Floor Plan Created By V1photos.com, Measurements Deamed Highly Reliable But Not Guaranteed.



Disclaimer: Sizes and Dimensions are Approximate, Actual May Vary.



Brad Inhulsen
970-584-4144
brad@searsrealestate.com

