




 Single Family

 1680 SQFT

 4 Beds

 2 Baths



Taylor Haas
303-665-7368
taylorh@coloradorpm.com
<https://www.coloradorpm.com/available-rental-properties-denver>



5711 Ammons Street, Arvada, CO 80002 – Main Level



TOTAL: 1644 sq. ft
BELOW GROUND: 742 sq. ft, FLOOR 2: 902 sq. ft
EXCLUDED AREAS: UTILITY: 182 sq. ft, SCREENED PORCH: 170 sq. ft, PORCH: 43 sq. ft,
PATIO: 375 sq. ft

Floor Plan Created By V1photos.com. Measurements Deemed Highly Reliable But Not Guaranteed.



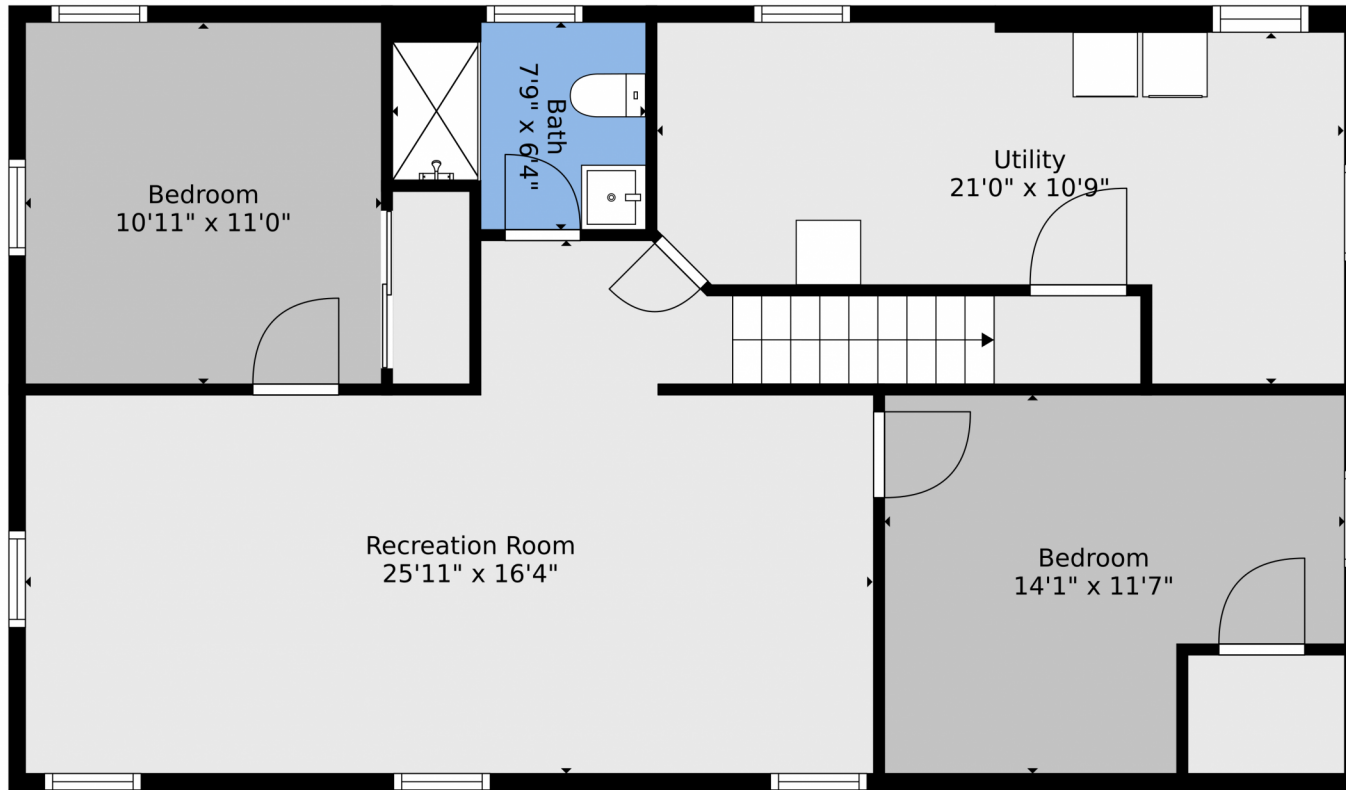
Disclaimer: Sizes and Dimensions are Approximate, Actual May Vary.



Taylor Haas
303-665-7368
taylorh@coloradorpm.com
<https://www.coloradorpm.com/available-rental-properties-denver>



5711 Ammons Street, Arvada, CO 80002 – Lower Level



TOTAL: 1644 sq. ft
BELOW GROUND: 742 sq. ft, FLOOR 2: 902 sq. ft
EXCLUDED AREAS: UTILITY: 182 sq. ft, SCREENED PORCH: 170 sq. ft, PORCH: 43 sq. ft,
PATIO: 375 sq. ft

Floor Plan Created By V1photos.com. Measurements Deamed Highly Reliable But Not Guaranteed.



Disclaimer: Sizes and Dimensions are Approximate, Actual May Vary.



Taylor Haas
303-665-7368
taylorh@coloradorpm.com
<https://www.coloradorpm.com/available-rental-properties-denver>



Scan code
for more
property
details

5711 Ammons Street, Arvada, CO 80002 – All Levels



TOTAL: 1644 sq. ft
BELOW GROUND: 742 sq. ft, FLOOR 2: 902 sq. ft
EXCLUDED AREAS: UTILITY: 182 sq. ft, SCREENED PORCH: 170 sq. ft, PORCH: 43 sq. ft,
PATIO: 375 sq. ft

Floor Plan Created By V1photos.com. Measurements Deamed Highly Reliable But Not Guaranteed.



Disclaimer: Sizes and Dimensions are Approximate, Actual May Vary.



Taylor Haas
303-665-7368
taylorh@coloradorpm.com
<https://www.coloradorpm.com/available-rental-properties-denver>



Scan code
for more
property
details

