

56909 E 42nd  
Strasburg, CO 80136  
COMMUNITY: Strasburg



Single Family



4166 SQFT



5 Beds



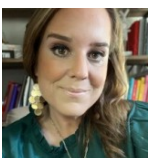
3/1 Baths



4 Car



4.59 Acre



**Renee Forsythe**  
303-856-3440  
realtorreneedtc@gmail.com



Scan code  
for more  
property  
details



# 56909 E 42nd, Strasburg, CO 80136 – Main Level



**TOTAL: 3434 sq. ft**  
BELOW GROUND: 1413 sq. ft, FLOOR 2: 2021 sq. ft  
EXCLUDED AREAS: ELECTRICAL ROOM: 119 sq. ft, STORAGE: 297 sq. ft, GARAGE: 481 sq. ft,  
PORCH: 191 sq. ft, COVERED DECK: 476 sq. ft

Floor Plan Created By V1photos.com, Measurements Deemed Highly Reliable But Not Guaranteed.



Disclaimer: Sizes and Dimensions are Approximate, Actual May Vary.



Renee Forsythe  
303-856-3440  
realtorreneedtc@gmail.com



56909 E 42nd, Strasburg, CO 80136 – Lower Level



**TOTAL: 3434 sq. ft**  
BELOW GROUND: 1413 sq. ft, FLOOR 2: 2021 sq. ft  
EXCLUDED AREAS: ELECTRICAL ROOM: 119 sq. ft, STORAGE: 297 sq. ft, GARAGE: 481 sq. ft,  
PORCH: 191 sq. ft, COVERED DECK: 476 sq. ft

Floor Plan Created By V1photos.com, Measurements Deamed Highly Reliable But Not Guaranteed.



Disclaimer: Sizes and Dimensions are Approximate, Actual May Vary.

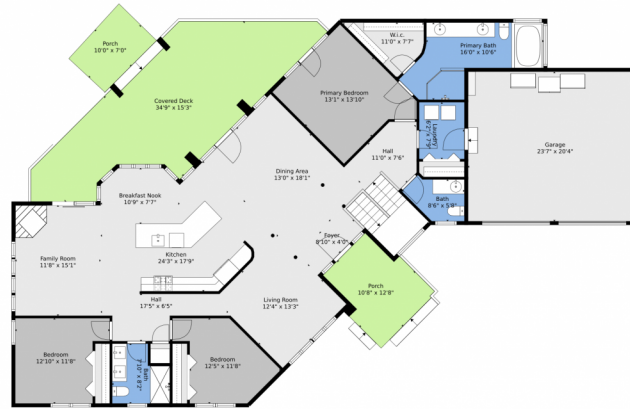


Renee Forsythe  
303-856-3440  
realtorreneedtc@gmail.com



Scan code  
for more  
property  
details

# 56909 E 42nd, Strasburg, CO 80136 – All Levels



Floor 2



Floor 1



**TOTAL: 3434 sq. ft**  
BELOW GROUND: 1413 sq. ft, FLOOR 2: 2021 sq. ft  
EXCLUDED AREAS: ELECTRICAL ROOM: 119 sq. ft, STORAGE: 297 sq. ft, GARAGE: 481 sq. ft,  
PORCH: 191 sq. ft, COVERED DECK: 476 sq. ft

Floor Plan Created By V1photos.com, Measurements Deamed Highly Reliable But Not Guaranteed.



Disclaimer: Sizes and Dimensions are Approximate, Actual May Vary.



Renee Forsythe  
303-856-3440  
realtorreneedtc@gmail.com

