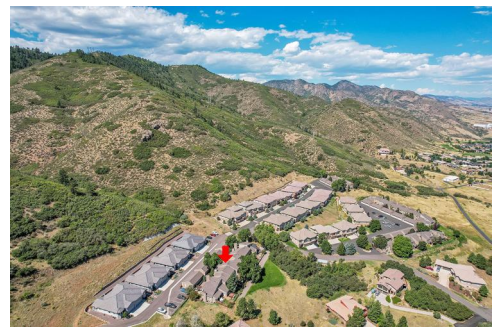





6860 Surrey Trail
Littleton, CO 80125

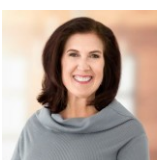


 Single Family

 2320 SQFT

 3 Beds

 3 Baths

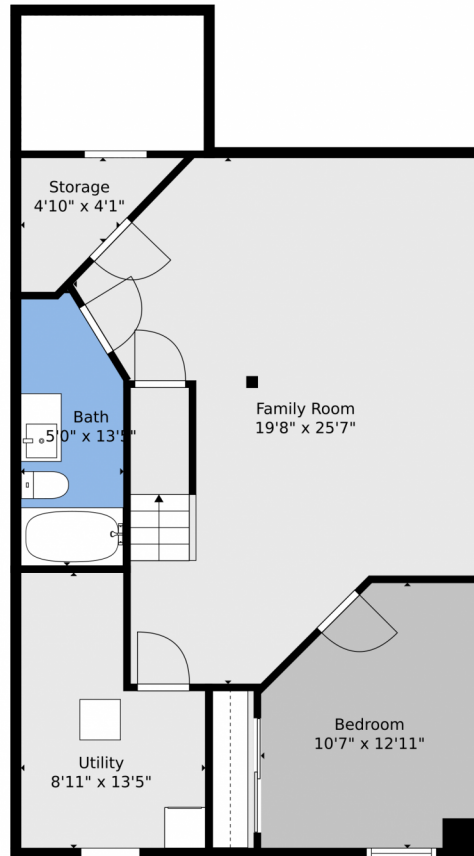


Phoebe Nason
303-725-2564
phoebenason@remax.net

Scan code
for more
property
details



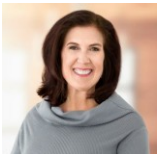
6860 Surrey Trail, Littleton, CO 80125 – Lower Level



TOTAL: 2276 sq. ft
BELOW GROUND: 618 sq. ft, FLOOR 2: 901 sq. ft, FLOOR 3: 757 sq. ft
EXCLUDED AREAS: UTILITY: 97 sq. ft, LOW CEILING: 61 sq. ft, STORAGE: 31 sq. ft,
GARAGE: 462 sq. ft, PATIO: 986 sq. ft, PORCH: 26 sq. ft,
BAY WINDOW: 7 sq. ft, OPEN TO BELOW: 232 sq. ft

Floor Plan Created By V1photos.com, Measurements Deamed Highly Reliable But Not Guaranteed.

Disclaimer: Sizes and Dimensions are Approximate, Actual May Vary.



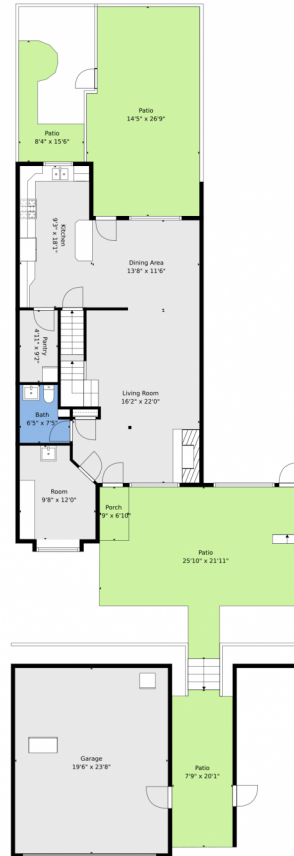
Phoebe Nason
303-725-2564
phoebenason@remax.net



Scan code
for more
property
details



6860 Surrey Trail, Littleton, CO 80125 – Main Level

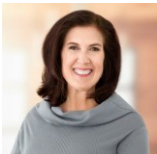


TOTAL: 2276 sq. ft
BELOW GROUND: 618 sq. ft, FLOOR 2: 901 sq. ft, FLOOR 3: 757 sq. ft
EXCLUDED AREAS: UTILITY: 97 sq. ft, LOW CEILING: 61 sq. ft, STORAGE: 31 sq. ft,
GARAGE: 462 sq. ft, PATIO: 986 sq. ft, PORCH: 26 sq. ft,
BAY WINDOW: 7 sq. ft, OPEN TO BELOW: 232 sq. ft

Floor Plan Created By V1photos.com, Measurements Deamed Highly Reliable But Not Guaranteed.



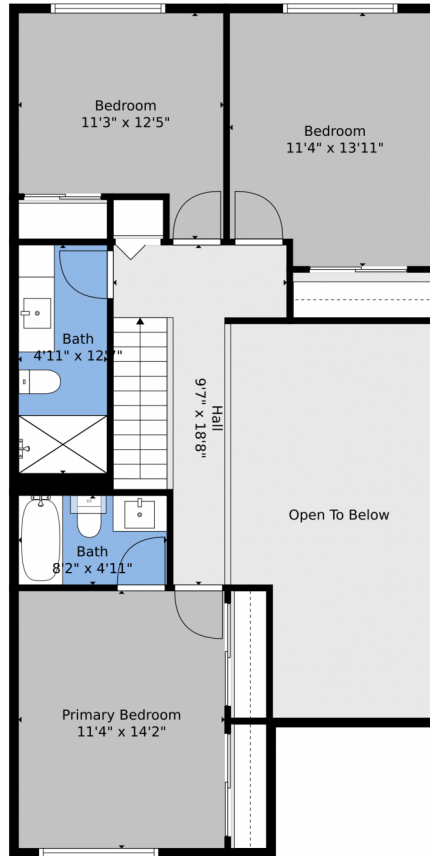
Disclaimer: Sizes and Dimensions are Approximate, Actual May Vary.



Phoebe Nason
303-725-2564
phoebenason@remax.net



6860 Surrey Trail, Littleton, CO 80125 – Second Level

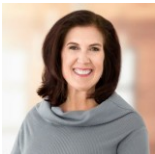


TOTAL: 2276 sq. ft
BELOW GROUND: 618 sq. ft, FLOOR 2: 901 sq. ft, FLOOR 3: 757 sq. ft
EXCLUDED AREAS: UTILITY: 97 sq. ft, LOW CEILING: 61 sq. ft, STORAGE: 31 sq. ft,
GARAGE: 462 sq. ft, PATIO: 986 sq. ft, PORCH: 26 sq. ft,
BAY WINDOW: 7 sq. ft, OPEN TO BELOW: 232 sq. ft

Floor Plan Created By V1photos.com, Measurements Deamed Highly Reliable But Not Guaranteed.



Disclaimer: Sizes and Dimensions are Approximate, Actual May Vary.



Phoebe Nason
303-725-2564
phoebenason@remax.net



6860 Surrey Trail, Littleton, CO 80125 – All Levels

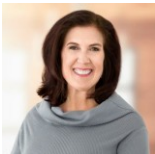


TOTAL: 2276 sq. ft
BELOW GROUND: 618 sq. ft, FLOOR 2: 901 sq. ft, FLOOR 3: 757 sq. ft
EXCLUDED AREAS: UTILITY: 97 sq. ft, LOW CEILING: 61 sq. ft, STORAGE: 31 sq. ft,
GARAGE: 462 sq. ft, PATIO: 986 sq. ft, PORCH: 26 sq. ft,
BAY WINDOW: 7 sq. ft, OPEN TO BELOW: 232 sq. ft

Floor Plan Created By V1photos.com, Measurements Deamed Highly Reliable But Not Guaranteed.



Disclaimer: Sizes and Dimensions are Approximate, Actual May Vary.



Phoebe Nason
303-725-2564
phoebenason@remax.net



Scan code
for more
property
details