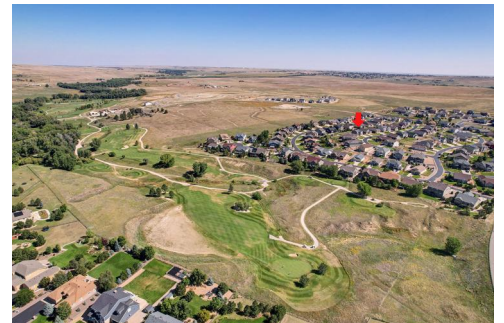




42373 Glen Abbey Drive
 Elizabeth, CO 80107
 COMMUNITY: Spring Valley Ranch

MLS # 1651503



Single Family 1676 SQFT 3 Beds 2 Baths 2 Car 0.27 Acre

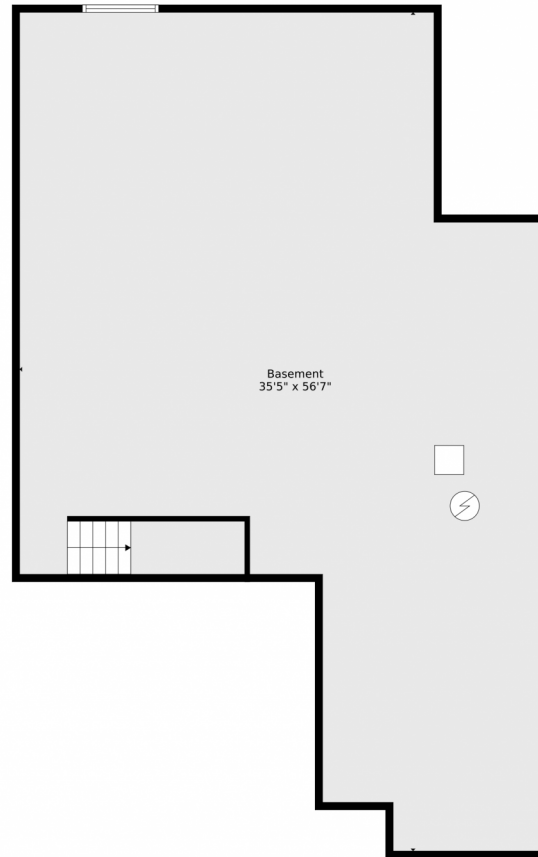
PROPERTY DETAILS

Welcome to Spring Valley Ranch, the Elizabeth community that offers country living with convenience. This ranch home sits on a 1/4 acre lot with a covered front porch, back patio, and extended deck. Inside, you'll find a bright and open floor plan with custom touches, including a designated dining room, updated kitchen with quartz countertops, and an inviting living room with a cozy fireplace. The main-floor laundry room has been upgraded with modern shelving and new washer and dryer units. The primary en suite features an electric fireplace, 5-piece bath, and walk-in closet. The unfinished basement offers potential for additional living space. Entertaining is easy with a large backyard, garden, and greenhouse. Built in 2017, this home has thoughtful updates including electric fireplace inserts, custom storage systems, Smart sprinklers, and a 220V outlet in the garage. Spring Valley Ranch is perfect for commuters and golf enthusiasts, as it borders the Spring Valley Golf Club. Don't miss out on this opportunity to make this home your own.



Anna Cromwell
 720-591-6373
 anna@exitrealtycherrycreek.com
 https://annacromwell.denverhomesearchnow.com





TOTAL: 1558 sq. ft
BELOW GROUND: 0 sq. ft, FLOOR 2: 1558 sq. ft
EXCLUDED AREAS: BASEMENT: 1500 sq. ft, GARAGE: 419 sq. ft
Floor Plan Created By V1photos.com, Measurements Deamed Highly Reliable But Not Guaranteed.



Disclaimer: Sizes and Dimensions are Approximate, Actual May Vary.



Anna Cromwell

720-591-6373

anna@exitrealtycherrycreek.com

<https://annacromwell.denverhomesearchnow.com>



Scan code
for more
property
details





TOTAL: 1558 sq. ft
BELOW GROUND: 0 sq. ft, FLOOR 2: 1558 sq. ft
EXCLUDED AREAS: BASEMENT: 1500 sq. ft, GARAGE: 419 sq. ft
Floor Plan Created By V1photos.com, Measurements Deamed Highly Reliable But Not Guaranteed.



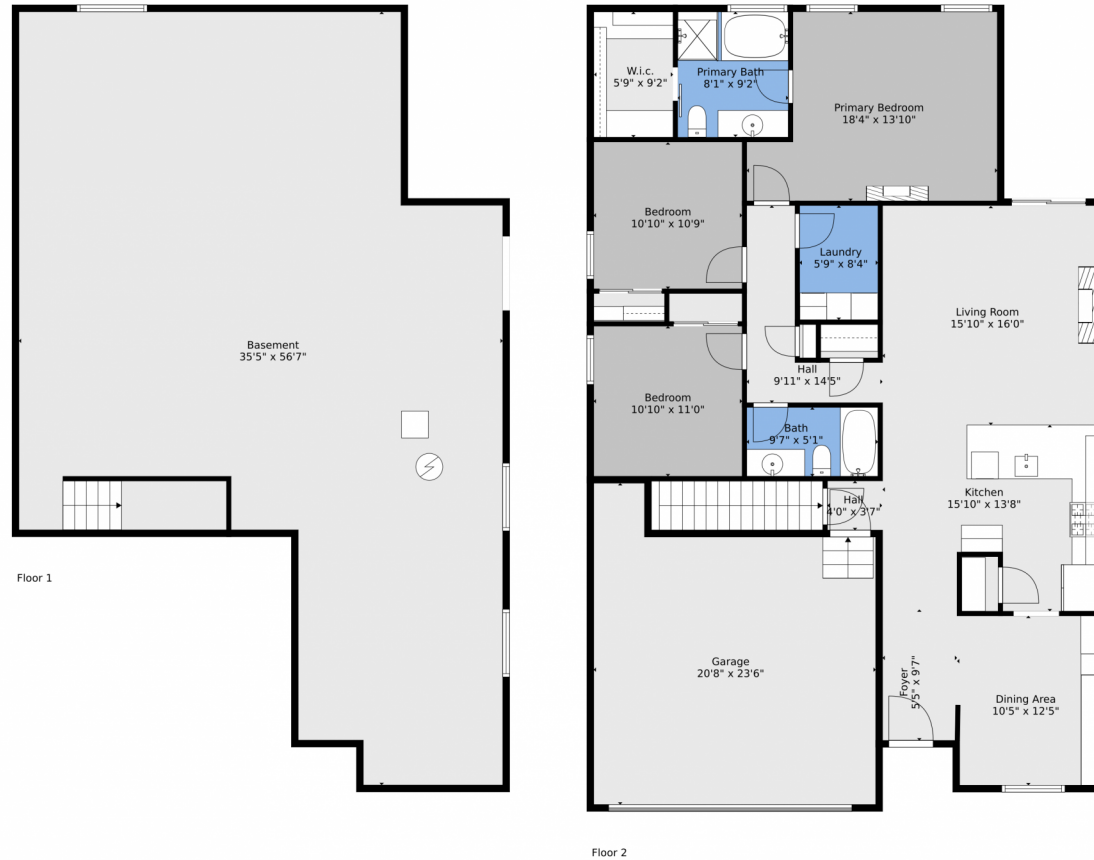
Disclaimer: Sizes and Dimensions are Approximate, Actual May Vary.



Anna Cromwell
720-591-6373
anna@exitrealtycherrycreek.com
<https://annacromwell.denverhomesearchnow.com>



Scan code
for more
property
details



TOTAL: 1558 sq. ft
BELOW GROUND: 0 sq. ft, FLOOR 2: 1558 sq. ft
EXCLUDED AREAS: BASEMENT: 1500 sq. ft, GARAGE: 419 sq. ft
Floor Plan Created By V1photos.com, Measurements Deamed Highly Reliable But Not Guaranteed.



Disclaimer: Sizes and Dimensions are Approximate, Actual May Vary.



Anna Cromwell
720-591-6373
anna@exitrealtycherrycreek.com
<https://annacromwell.denverhomesearchnow.com>



Scan code
for more
property
details