



1073 Broken Arrow Circle
 Elizabeth, CO 80107
 COMMUNITY: Stage Run

MLS # 8468854
 PRICE \$1,299,000

Country Quiet...City Close...Welcome to Elizabeth!



Single Family



4561 SQFT



4 Beds



3/1 Baths



3 Car



4.07 Acre

PROPERTY DETAILS

Custom built home for sale by the original owner in the highly desirable Stage Run community. Over 4 acres are tucked away in mature landscaping at the end of a serene cul-de-sac. 4 bedroom, 4 bathroom home with expansive views and multigenerational potential. The suite retreat upstairs provides natural light, large bedroom, 5-piece bathroom, walk in closet and a multi purpose loft equipped with a wet bar. The loft can host an office, a nursery or both. Open concept main level entertaining space. Bring the horses, the dogs, the RV and settle in to live and love a Colorado lifestyle. A breezeway between the walkout basement and the barn allow feeding to be easy in any season without putting on your coat. Insulated barn, tack room, two 10' x 12' Stable master stalls with individual paddocks including 10' overhangs and multiple pastures & extensive bridle paths. Canines are set up with indoor/outdoor kennels, dog fenced yards, grooming room with elevated tub, hot water & hydro surge bathing station. Detached RV garage protects additional forms of transportation, toys or valuables.



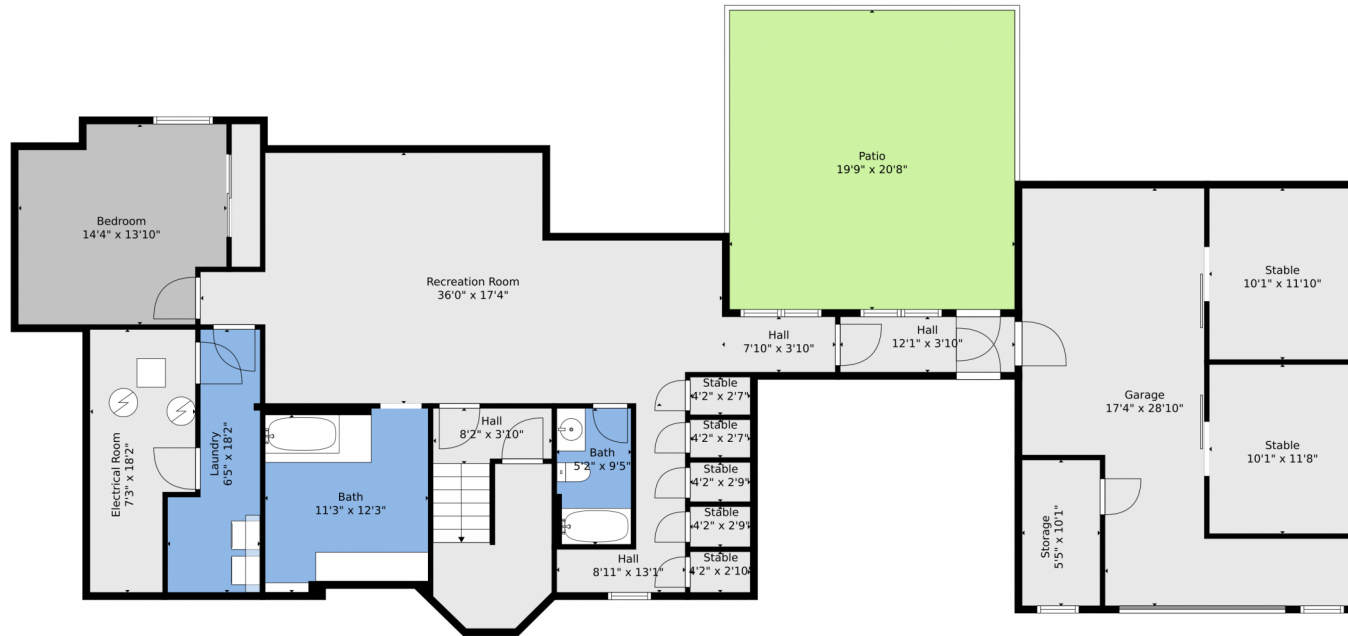
Rebecca Jennings
 303-507-5235
 rebecca.jennings@yahoo.com



Scan code
 for more
 property
 details



1073 Broken Arrow Circle, Elizabeth, CO 80107 – Lower Level



TOTAL: 3751 sq. ft
BELOW GROUND: 1265 sq. ft, FLOOR 2: 1597 sq. ft, FLOOR 3: 889 sq. ft
EXCLUDED AREAS: GARAGE: 1787 sq. ft, STORAGE: 54 sq. ft, ELECTRICAL ROOM: 117 sq. ft,
STABLE: 295 sq. ft, PATIO: 608 sq. ft, DECK: 661 sq. ft,
PORCH: 269 sq. ft, OPEN TO BELOW: 276 sq. ft

Floor Plan Created By V1photos.com, Measurements Deemed Highly Reliable But Not Guaranteed.



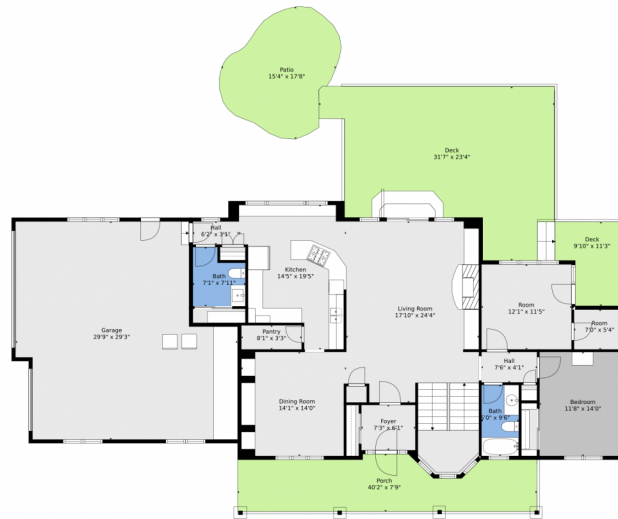
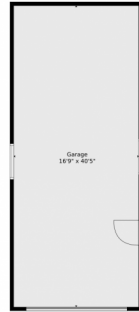
Disclaimer: Sizes and Dimensions are Approximate, Actual May Vary.



Rebecca Jennings
303-507-5235
rebecca.jennings@yahoo.com



1073 Broken Arrow Circle, Elizabeth, CO 80107 – Main Level



TOTAL: 3751 sq. ft
BELOW GROUND: 1265 sq. ft, FLOOR 2: 1597 sq. ft, FLOOR 3: 889 sq. ft
EXCLUDED AREAS: GARAGE: 1787 sq. ft, STORAGE: 54 sq. ft, ELECTRICAL ROOM: 117 sq. ft,
STABLE: 295 sq. ft, PATIO: 608 sq. ft, DECK: 661 sq. ft,
PORCH: 269 sq. ft, OPEN TO BELOW: 276 sq. ft

Floor Plan Created By V1photos.com, Measurements Deamed Highly Reliable But Not Guaranteed.



Disclaimer: Sizes and Dimensions are Approximate, Actual May Vary.



Rebecca Jennings
303-507-5235
rebecca.jennings@yahoo.com



1073 Broken Arrow Circle, Elizabeth, CO 80107 – Upper Level



TOTAL: 3751 sq. ft
BELOW GROUND: 1265 sq. ft, FLOOR 2: 1597 sq. ft, FLOOR 3: 889 sq. ft
EXCLUDED AREAS: GARAGE: 1787 sq. ft, STORAGE: 54 sq. ft, ELECTRICAL ROOM: 117 sq. ft,
STABLE: 295 sq. ft, PATIO: 608 sq. ft, DECK: 661 sq. ft,
PORCH: 269 sq. ft, OPEN TO BELOW: 276 sq. ft

Floor Plan Created By V1photos.com. Measurements Deamed Highly Reliable But Not Guaranteed.



Disclaimer: Sizes and Dimensions are Approximate, Actual May Vary.



Rebecca Jennings
303-507-5235
rebecca.jennings@yahoo.com

