



440 La Hermosa Drive
Bellvue, CO 80512

PRICE \$1,495,000



Farm/Ranch 2510 SQFT 5 Beds 3 Baths 2 Car 48 Acre

PROPERTY DETAILS

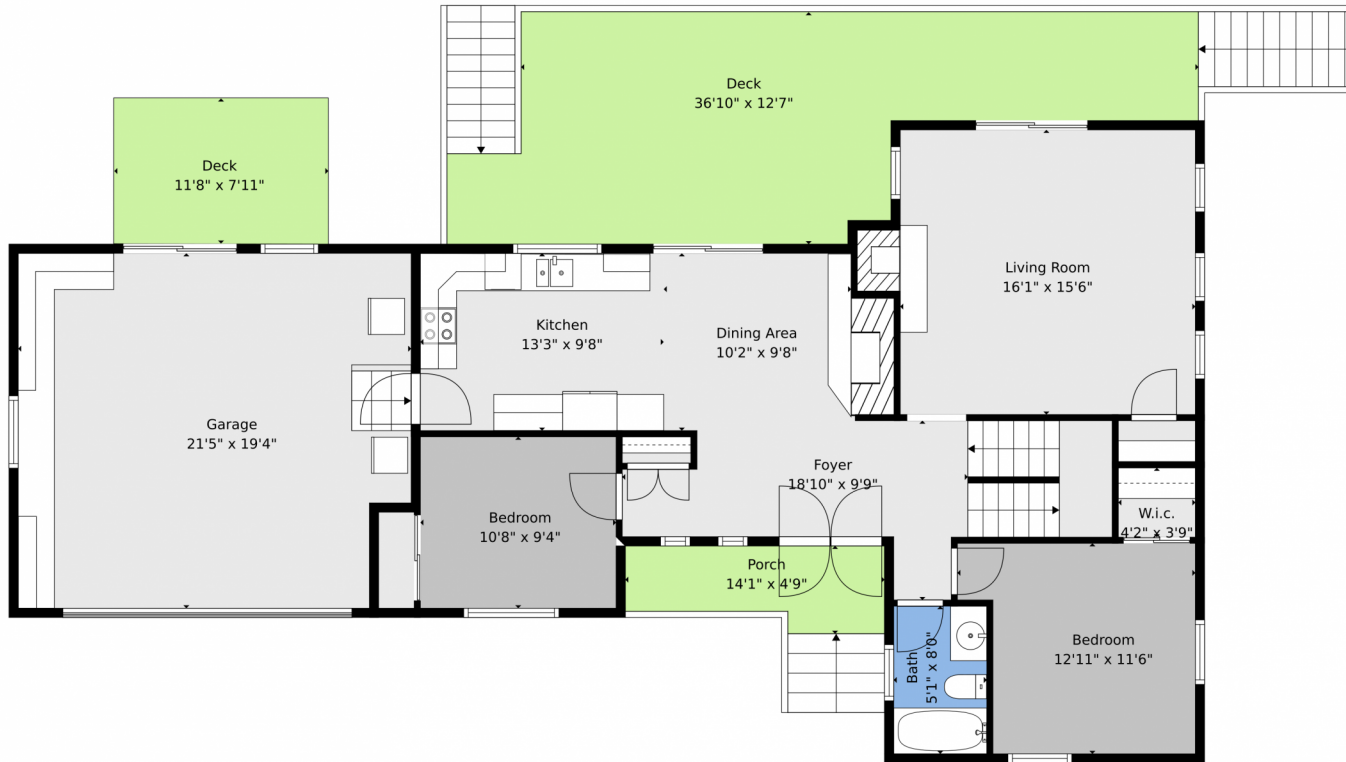
Private 48-acre horse ranch above Fort Collins with a lovely family home, grazing, and farming. 2 parcels totaling 48.3 acres. 2 domestic use wells for watering animals and irrigation. Farm home with moss-rock fireplace, pellet stove, and basement wood-burning fireplace. Master suite with private balcony. Kitchen, living room, 2 bedrooms, and full bath on main floor. Walk-out basement with 2 bedrooms, living room, laundry room, and full bathroom. Mountain and meadow views. Fenced-in yard and gardening area. Fully fenced pasture. Cleary Steel Buildings with space for machinery storage and 4 animal stalls. Enclosed steel building with wood-burning stove. Whole-home generator and additional workshop structure. Forest Ag Management Plan for tax benefits. Perfect for a working ranch or moving an existing one. Must see in person to appreciate.



K.C. Golfinopoulos
720-750-2269
mountainrealtykc@gmail.com
<https://mountainrealtycolorado.com/>



440 La Hermosa Drive, Bellvue, CO 80512 – Main Level



TOTAL: 2202 sq. ft
BELOW GROUND: 894 sq. ft, FLOOR 2: 1010 sq. ft, FLOOR 3: 298 sq. ft
EXCLUDED AREAS: GARAGE: 400 sq. ft, DECK: 464 sq. ft, PORCH: 57 sq. ft,
BALCONY: 63 sq. ft

Floor Plan Created By V1photos.com, Measurements Deamed Highly Reliable But Not Guaranteed.



Disclaimer: Sizes and Dimensions are Approximate, Actual May Vary.



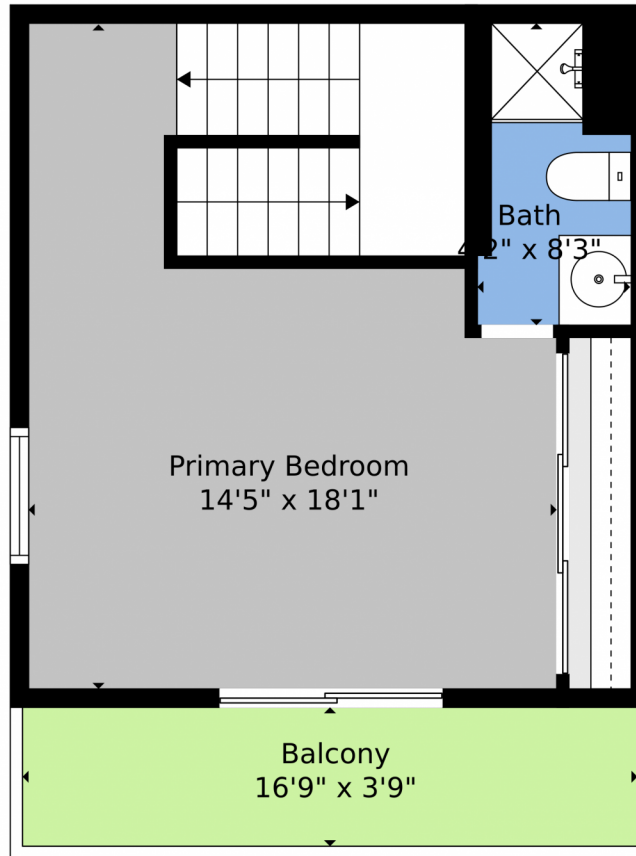
K.C. Golfopoulos
720-750-2269
mountainrealtykc@gmail.com
<https://mountainrealtycolorado.com/>



Scan code
for more
property
details



440 La Hermosa Drive, Bellvue, CO 80512 – Upper Level



TOTAL: 2202 sq. ft
BELOW GROUND: 894 sq. ft, FLOOR 2: 1010 sq. ft, FLOOR 3: 298 sq. ft
EXCLUDED AREAS: GARAGE: 400 sq. ft, DECK: 464 sq. ft, PORCH: 57 sq. ft,
BALCONY: 63 sq. ft

Floor Plan Created By V1photos.com, Measurements Deamed Highly Reliable But Not Guaranteed.



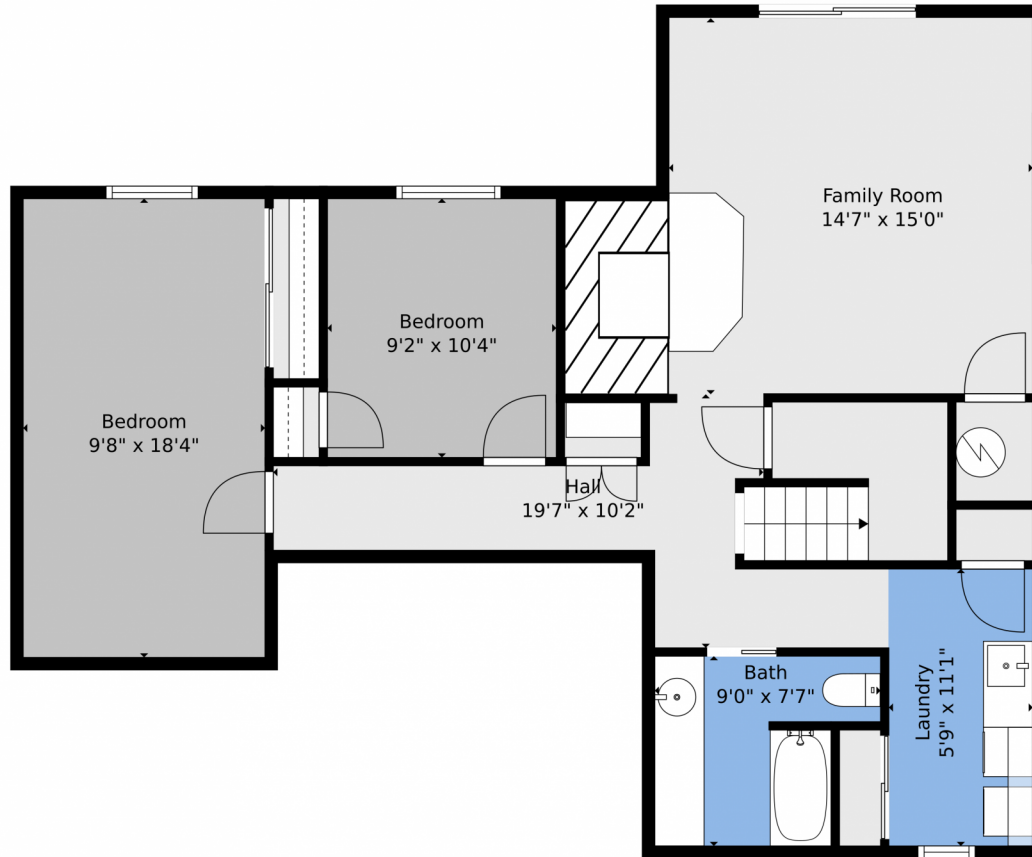
Disclaimer: Sizes and Dimensions are Approximate, Actual May Vary.



K.C. Golfopoulos
720-750-2269
mountainrealtykc@gmail.com
<https://mountainrealtycolorado.com/>



440 La Hermosa Drive, Bellvue, CO 80512 – Lower Level



TOTAL: 2202 sq. ft
BELOW GROUND: 894 sq. ft, FLOOR 2: 1010 sq. ft, FLOOR 3: 298 sq. ft
EXCLUDED AREAS: GARAGE: 400 sq. ft, DECK: 464 sq. ft, PORCH: 57 sq. ft,
BALCONY: 63 sq. ft

Floor Plan Created By V1photos.com, Measurements Deamed Highly Reliable But Not Guaranteed.



Disclaimer: Sizes and Dimensions are Approximate, Actual May Vary.



K.C. Golfinopoulos
720-750-2269
mountainrealtykc@gmail.com
<https://mountainrealtycolorado.com/>

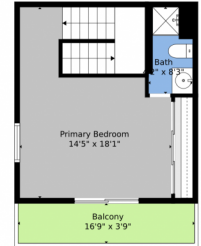


Scan code
for more
property
details

440 La Hermosa Drive, Bellvue, CO 80512 – All Levels



Floor 2



Floor 3



Floor 1



TOTAL: 2202 sq. ft
BELOW GROUND: 894 sq. ft, FLOOR 2: 1010 sq. ft, FLOOR 3: 298 sq. ft
EXCLUDED AREAS: GARAGE: 400 sq. ft, DECK: 464 sq. ft, PORCH: 57 sq. ft,
BALCONY: 63 sq. ft

Floor Plan Created By V1photos.com, Measurements Deamed Highly Reliable But Not Guaranteed.



Disclaimer: Sizes and Dimensions are Approximate, Actual May Vary.



K.C. Golfinopoulos
720-750-2269
mountainrealtykc@gmail.com
<https://mountainrealtycolorado.com/>



Scan code
for more
property
details

